

## Product datasheet for TP300042

### Bcl rambo (BCL2L13) (NM\_015367) Human Recombinant Protein

#### Product data:

Product Type:	Recombinant Proteins
Description:	Recombinant protein of human BCL2-like 13 (apoptosis facilitator) (BCL2L13), nuclear gene encoding mitochondrial protein, 20 µg
Species:	Human
Expression Host:	HEK293T
Expression cDNA Clone or AA Sequence:	>RC200042 protein sequence Red=Cloning site Green=Tags(s)

MASSTVPLGFHYETKYVWLSYLGLLSQEKLQEQLHSSPQGVQLDIASQSLDQEILLKVKTEIEEELKSL  
DKEISEAFTSTGFDRTHTSPVFSPANPESSMEDCLAHLGKVSQELKEPLHKALQMLLSQPVTYQAFRECT  
LETTVHASGWNKILVPLVLLRQMLLELTRRGQEPLSALLQFGVTYLEDYSAEYIIQGGWGTVFSLESEE  
EYYPGITAEDSNDIYILPSDNSGQVSPPESTVTTSWQSESLPVLSASQSWHTESLPVSLGPESWQQIA  
MDPEEVKSLDSNGAGEKSENNSSNSDIVHVEKEEVPEGMEEAAVASVVLPALELQALPEAPAPLLPHIT  
ATSLTGTRESDEVTVEKSSPATSLFVELDEEEVKAATTEPTEVEEVPALEPTETLLSEKEINAREES  
LVEELSPASEKKPVPPSEGGKSRSLSPAGEMKPMPLSEGKSILLFGGAAAVAILAVAIGVALALRRK

TRTRPLEQKLISEEDLAANDILDYKDDDDKV

Tag:	C-Myc/DDK
Predicted MW:	52.5 kDa
Concentration:	>0.05 µg/µL as determined by microplate BCA method
Purity:	> 80% as determined by SDS-PAGE and Coomassie blue staining
Buffer:	25 mM Tris-HCl, 100 mM glycine, pH 7.3, 10% glycerol
Preparation:	Recombinant protein was captured through anti-DDK affinity column followed by conventional chromatography steps.
Note:	For testing in cell culture applications, please filter before use. Note that you may experience some loss of protein during the filtration process.
Storage:	Store at -80°C.
Stability:	Stable for 12 months from the date of receipt of the product under proper storage and handling conditions. Avoid repeated freeze-thaw cycles.



[View online »](#)

RefSeq: [NP\\_056182](#)

Locus ID: 23786

UniProt ID: [Q9B XK5](#)

RefSeq Size: 5132

Cytogenetics: 22q11.21

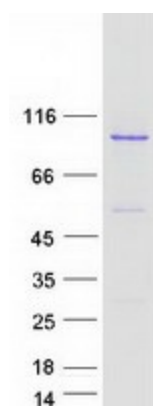
RefSeq ORF: 1455

Synonyms: BCL-RAMBO; Bcl2-L-13; MIL1

**Summary:** This gene encodes a mitochondrially-localized protein with conserved B-cell lymphoma 2 homology motifs. Overexpression of the encoded protein results in apoptosis. Alternatively spliced transcript variants have been observed for this gene. [provided by RefSeq, Jul 2012]

**Protein Families:** Druggable Genome, Transmembrane

### Product images:



Coomassie blue staining of purified BCL2L13 protein (Cat# TP300042). The protein was produced from HEK293T cells transfected with BCL2L13 cDNA clone (Cat# [RC200042]) using MegaTran 2.0 (Cat# [TT210002]).