

## Product datasheet for **TP300033L**

### Mitochondrial ribosomal protein L11 (MRPL11) (NM\_016050) Human Recombinant Protein

#### Product data:

Product Type:	Recombinant Proteins
Description:	Recombinant protein of human mitochondrial ribosomal protein L11 (MRPL11), nuclear gene encoding mitochondrial protein, transcript variant 1, 1 mg
Species:	Human
Expression Host:	HEK293T
Expression cDNA Clone or AA Sequence:	>RC200033 protein sequence <b>Red</b> =Cloning site <b>Green</b> =Tags(s)
	 MSKLGRAARGLRKPEVGGVIRAIVRAGLAMPGPPLGPVLGQRGVSINQFCKEFNERTKDIKEGIPLPTKI LVKPDRTFEIKIGQPTVSYFLKAAAGIEK GARQTGKEVAGLVTLKHVYEIARIKAQDEAFALQDVPLSSV VRSIIGSARSLGIRVVKDLSSEELAAFQKERAIFLAAQKEADLAAQEAAKK  <b>TRTRPLEQKLISEEDLAANDILDYKDDDDKV</b>
Tag:	C-Myc/DDK
Predicted MW:	20.5 kDa
Concentration:	>0.05 µg/µL as determined by microplate BCA method
Purity:	> 80% as determined by SDS-PAGE and Coomassie blue staining
Buffer:	25 mM Tris-HCl, 100 mM glycine, pH 7.3, 10% glycerol
Preparation:	Recombinant protein was captured through anti-DDK affinity column followed by conventional chromatography steps.
Note:	For testing in cell culture applications, please filter before use. Note that you may experience some loss of protein during the filtration process.
Storage:	Store at -80°C.
Stability:	Stable for 12 months from the date of receipt of the product under proper storage and handling conditions. Avoid repeated freeze-thaw cycles.
RefSeq:	<a href="#">NP_057134</a>
Locus ID:	65003
UniProt ID:	<a href="#">Q9Y3B7</a>



[View online »](#)

RefSeq Size: 1622

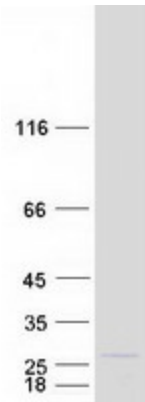
Cytogenetics: 11q13.2

RefSeq ORF: 576

Synonyms: CGI-113; L11MT; MRP-L11

**Summary:** This nuclear gene encodes a 39S subunit component of the mitochondrial ribosome. Alternative splicing results in multiple transcript variants. Pseudogenes for this gene are found on chromosomes 5 and 12. [provided by RefSeq, May 2014]

### Product images:



Coomassie blue staining of purified MRPL11 protein (Cat# [TP300033]). The protein was produced from HEK293T cells transfected with MRPL11 cDNA clone (Cat# [RC200033]) using MegaTran 2.0 (Cat# [TT210002]).