

Product datasheet for **TP300033**

Mitochondrial ribosomal protein L11 (MRPL11) (NM_016050) Human Recombinant Protein

Product data:

Product Type:	Recombinant Proteins
Description:	Recombinant protein of human mitochondrial ribosomal protein L11 (MRPL11), nuclear gene encoding mitochondrial protein, transcript variant 1, 20 µg
Species:	Human
Expression Host:	HEK293T
Expression cDNA Clone or AA Sequence:	>RC200033 protein sequence Red =Cloning site Green =Tags(s)
	<p>MSKLGRAARGLRKPEVGGVIRAIVRAGLAMPGPPLGPVLGQRGVSINQFCKEFNERTKDIKEGIPLPTKI LVKPDRTFEIKIGQPTVSYFLKAAAGIEK GARQTGKEVAGLVTLKHVYEIARIKAQDEAFALQDVPLSSV VRSIIGSARSLGIRVVKDLSSEELAAFQKERAIFLAAQKEADLAAQEAAKK</p> <p>TRTRPLEQKLISEEDLAANDILDYKDDDDKV</p>
Tag:	C-Myc/DDK
Predicted MW:	20.5 kDa
Concentration:	>0.05 µg/µL as determined by microplate BCA method
Purity:	> 80% as determined by SDS-PAGE and Coomassie blue staining
Buffer:	25 mM Tris-HCl, 100 mM glycine, pH 7.3, 10% glycerol
Preparation:	Recombinant protein was captured through anti-DDK affinity column followed by conventional chromatography steps.
Note:	For testing in cell culture applications, please filter before use. Note that you may experience some loss of protein during the filtration process.
Storage:	Store at -80°C.
Stability:	Stable for 12 months from the date of receipt of the product under proper storage and handling conditions. Avoid repeated freeze-thaw cycles.
RefSeq:	<u>NP_057134</u>
Locus ID:	65003
UniProt ID:	<u>Q9Y3B7</u>



[View online »](#)

RefSeq Size: 1622

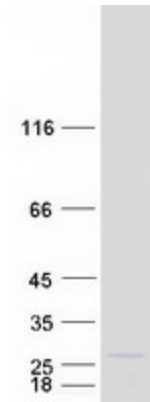
Cytogenetics: 11q13.2

RefSeq ORF: 576

Synonyms: CGI-113; L11MT; MRP-L11

Summary: This nuclear gene encodes a 39S subunit component of the mitochondrial ribosome. Alternative splicing results in multiple transcript variants. Pseudogenes for this gene are found on chromosomes 5 and 12. [provided by RefSeq, May 2014]

Product images:



Coomassie blue staining of purified MRPL11 protein (Cat# TP300033). The protein was produced from HEK293T cells transfected with MRPL11 cDNA clone (Cat# [RC200033]) using MegaTran 2.0 (Cat# [TT210002]).