

Product datasheet for **TP300025M**

VPS28 (NM_016208) Human Recombinant Protein

Product data:

Product Type:	Recombinant Proteins
Description:	Recombinant protein of human vacuolar protein sorting 28 homolog (<i>S. cerevisiae</i>) (VPS28), transcript variant 1, 100 µg
Species:	Human
Expression Host:	HEK293T
Expression cDNA Clone or AA Sequence:	>RC200025 protein sequence Red =Cloning site Green =Tags(s)
	 MFHGIPATPGIGAPGNKPELYEEVKLYKNAREREKYDNMAELFAWKTMQALEKAYIKDCVSPSEYTAAC SRLLVQYKAAFRQVQGSEISSIDFCRKFRLLDCPLAMERIKEDRPITIKDDKGNLNRICIADVSLFITVM DKLRLEIRAMDEIQPDLRELMETMHRMSHLPPDFEGRQTVSQWLQTLGMSASDELDDSQVRQMLFDLES AYNAFNRLHA TRTRPLEQKLISEEDLAANDILDYKDDDDKV
Tag:	C-Myc/DDK
Predicted MW:	25.2 kDa
Concentration:	>0.05 µg/µL as determined by microplate BCA method
Purity:	> 80% as determined by SDS-PAGE and Coomassie blue staining
Buffer:	25 mM Tris-HCl, 100 mM glycine, pH 7.3, 10% glycerol
Preparation:	Recombinant protein was captured through anti-DDK affinity column followed by conventional chromatography steps.
Note:	For testing in cell culture applications, please filter before use. Note that you may experience some loss of protein during the filtration process.
Storage:	Store at -80°C.
Stability:	Stable for 12 months from the date of receipt of the product under proper storage and handling conditions. Avoid repeated freeze-thaw cycles.
RefSeq:	NP_057292
Locus ID:	51160



[View online »](#)

UniProt ID: [Q9UK41](#), [Q548N1](#)

RefSeq Size: 994

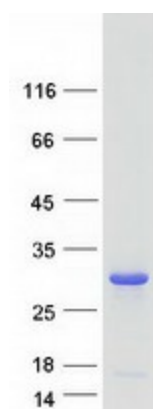
Cytogenetics: 8q24.3

RefSeq ORF: 663

Summary: This gene encodes a protein subunit of the ESCRT-I complex (endosomal complexes required for transport), which functions in the transport and sorting of proteins into subcellular vesicles. This complex can also be hijacked to facilitate the budding of enveloped viruses from the cell membrane. Alternative splicing results in multiple transcript variants encoding different isoforms. [provided by RefSeq, Jul 2013]

Protein Pathways: Endocytosis

Product images:



Coomassie blue staining of purified VPS28 protein (Cat# [TP300025]). The protein was produced from HEK293T cells transfected with VPS28 cDNA clone (Cat# [RC200025]) using MegaTran 2.0 (Cat# [TT210002]).