

Product datasheet for **TP300018**

LCMT1 (NM_016309) Human Recombinant Protein

Product data:

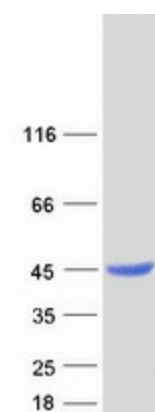
Product Type:	Recombinant Proteins
Description:	Recombinant protein of human leucine carboxyl methyltransferase 1 (LCMT1), transcript variant 1, 20 µg
Species:	Human
Expression Host:	HEK293T
Expression cDNA Clone or AA Sequence:	>RC200018 protein sequence Red =Cloning site Green =Tags(s)
	<p>MATRQRESSITSCCSTSSCDADDEGVRGTCEDASLCKRFAVSIGYWHDPYIQHFVRLSKERKAPEINRGY FARVHGVSQLIKAFRLKTECHCQIVNLGAGMDTTFWRLKDEDLLPSKYFEVDFPMIVTRKLHSICKPPL SSPILEHSEDTLQMDGHILDSKRYAVIGADLRDLSELEEKLKCCNMNTQLPTLLIAECVLVYMTPEQSA NLLKWAANSFERAMFINYEQVNMGDRFGQIMIENLRRRQCDLAGVETCKSLESQKERLLSNGWETASAVD MMELYNRLPRAEVSRIESLEFLDEMELLEQLMRHYCLCWATKGGNELGLKEITY</p> <p>TRTRPLEQKLISEEDLAANDILDYKDDDDKV</p>
Tag:	C-Myc/DDK
Predicted MW:	38.2 kDa
Concentration:	>0.05 µg/µL as determined by microplate BCA method
Purity:	> 80% as determined by SDS-PAGE and Coomassie blue staining
Buffer:	25 mM Tris-HCl, 100 mM glycine, pH 7.3, 10% glycerol
Preparation:	Recombinant protein was captured through anti-DDK affinity column followed by conventional chromatography steps.
Note:	For testing in cell culture applications, please filter before use. Note that you may experience some loss of protein during the filtration process.
Storage:	Store at -80°C.
Stability:	Stable for 12 months from the date of receipt of the product under proper storage and handling conditions. Avoid repeated freeze-thaw cycles.
RefSeq:	NP_057393
Locus ID:	51451



[View online »](#)

UniProt ID:	Q9UIC8
RefSeq Size:	1374
Cytogenetics:	16p12.1
RefSeq ORF:	1002
Synonyms:	CGI-68; LCMT; PPMT1
Summary:	LCMT1 catalyzes the methylation of the carboxyl group of the C-terminal leucine residue (leu309) of the catalytic subunit of protein phosphatase-2A (PPP2CA; MIM 176915) (De Baere et al., 1999 [PubMed 10600115]).[supplied by OMIM, Mar 2008]
Protein Pathways:	Androgen and estrogen metabolism, Histidine metabolism, Selenoamino acid metabolism, Tyrosine metabolism

Product images:



Coomassie blue staining of purified LCMT1 protein (Cat# TP300018). The protein was produced from HEK293T cells transfected with LCMT1 cDNA clone (Cat# [RC200018]) using MegaTran 2.0 (Cat# [TT210002]).