

Product datasheet for TP300016L

C14orf166 (RTRAF) (NM_016039) Human Recombinant Protein

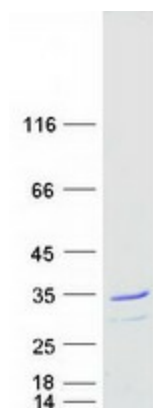
Product data:

Product Type:	Recombinant Proteins
Description:	Recombinant protein of human chromosome 14 open reading frame 166 (C14orf166), 1 mg
Species:	Human
Expression Host:	HEK293T
Expression cDNA Clone or AA Sequence:	>RC200016 protein sequence Red =Cloning site Green =Tags(s) MFRRKLTALDYHNPAGFNCKDETEFRNFIVWLEDQKIRHYKIEDRGNLRNIHSSDWPKFFEKYLRDVNCP FKIQDRQEIDWLLGLAVRLEYGDNAEKYKDLVPDNSKTADNATKNAEPLINLDVNNPDFKAGVMALANL LQIQRHDDYLVMLKAIRILVQERLTQDAVAKANQKEGLPVALDKHILGFDTGDAVLNEAAQILRLHIE ELRELQTKINEAIVAVQAIADPKTDHRLGKVG TR TRPLEQKLISEEDLAANDILDYKDDDDKV
Tag:	C-Myc/DDK
Predicted MW:	27.9 kDa
Concentration:	>0.05 µg/µL as determined by microplate BCA method
Purity:	> 80% as determined by SDS-PAGE and Coomassie blue staining
Buffer:	25 mM Tris-HCl, 100 mM glycine, pH 7.3, 10% glycerol
Preparation:	Recombinant protein was captured through anti-DDK affinity column followed by conventional chromatography steps.
Note:	For testing in cell culture applications, please filter before use. Note that you may experience some loss of protein during the filtration process.
Storage:	Store at -80°C.
Stability:	Stable for 12 months from the date of receipt of the product under proper storage and handling conditions. Avoid repeated freeze-thaw cycles.
RefSeq:	<u>NP_057123</u>
Locus ID:	51637
UniProt ID:	<u>Q9Y224</u> , <u>Q549M8</u>


[View online »](#)

RefSeq Size:	1064
Cytogenetics:	14q22.1
RefSeq ORF:	732
Synonyms:	C14orf166; CGI-99; CGI99; CLE; CLE7; hCLE; hCLE1; LCRP369; RLLM1
Summary:	RNA-binding protein involved in modulation of mRNA transcription by Polymerase II (PubMed:16950395). Component of the tRNA-splicing ligase complex and is required for tRNA ligation (PubMed:24870230). May be required for RNA transport (PubMed:24608264). [UniProtKB/Swiss-Prot Function]

Product images:



Coomassie blue staining of purified RTRAF protein (Cat# [TP300016]). The protein was produced from HEK293T cells transfected with RTRAF cDNA clone (Cat# [RC200016]) using MegaTran 2.0 (Cat# [TT210002]).