

Product datasheet for **TP300015L**

PPIL1 (NM_016059) Human Recombinant Protein

Product data:

Product Type:	Recombinant Proteins
Description:	Recombinant protein of human peptidylprolyl isomerase (cyclophilin)-like 1 (PPIL1), 1 mg
Species:	Human
Expression Host:	HEK293T
Expression cDNA Clone or AA Sequence:	>RC200015 protein sequence Red =Cloning site Green =Tags(s)
	MAAIPDWSWQPPNVYLETSMGIIVLELYWKHAPKTCKNFAELARRGYNGTKFHRIIKDFMIQGGDPTGT GRGGASIYGKQFEDELHPDLKFTGAGILAMANAGPDTNGSQFFVTLAPTQWLDGKHTIFGRVCQGIGMVN RVGMVETNSQDRPVDDVKIIKAYPSG
	TRTRPLEQKLISEEDLAANDILDYKDDDDKV
Tag:	C-Myc/DDK
Predicted MW:	18.1 kDa
Concentration:	>0.05 µg/µL as determined by microplate BCA method
Purity:	> 80% as determined by SDS-PAGE and Coomassie blue staining
Buffer:	25 mM Tris-HCl, 100 mM glycine, pH 7.3, 10% glycerol
Preparation:	Recombinant protein was captured through anti-DDK affinity column followed by conventional chromatography steps.
Note:	For testing in cell culture applications, please filter before use. Note that you may experience some loss of protein during the filtration process.
Storage:	Store at -80°C.
Stability:	Stable for 12 months from the date of receipt of the product under proper storage and handling conditions. Avoid repeated freeze-thaw cycles.
RefSeq:	NP_057143
Locus ID:	51645
UniProt ID:	Q9Y3C6 , A0A024RCX8 , A0A494C014
RefSeq Size:	1750



[View online »](#)

Cytogenetics: 6p21.2

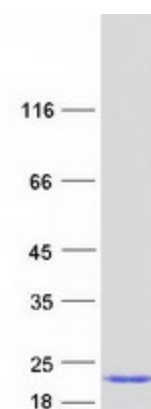
RefSeq ORF: 498

Synonyms: CGI-124; CYPL1; hCyPX; PCH14; PPIase

Summary: This gene is a member of the cyclophilin family of peptidylprolyl isomerases (PPIases). The cyclophilins are a highly conserved, ubiquitous family, members of which play an important role in protein folding, immunosuppression by cyclosporin A, and infection of HIV-1 virions. Based on similarity to other PPIases, this protein could accelerate the folding of proteins and might catalyze the cis-trans isomerization of proline imidic peptide bonds in oligopeptides. [provided by RefSeq, Jul 2008]

Protein Pathways: Spliceosome

Product images:



Coomassie blue staining of purified PPIL1 protein (Cat# [TP300015]). The protein was produced from HEK293T cells transfected with PPIL1 cDNA clone (Cat# [RC200015]) using MegaTran 2.0 (Cat# [TT210002]).