

## Product datasheet for TP300013L

### 14 3 3 eta (YWHAH) (NM\_003405) Human Recombinant Protein

#### Product data:

Product Type:	Recombinant Proteins
Description:	Recombinant protein of human tyrosine 3-monooxygenase/tryptophan 5-monooxygenase activation protein, eta polypeptide (YWHAH), 1 mg
Species:	Human
Expression Host:	HEK293T
Expression cDNA Clone or AA Sequence:	>RC200013 protein sequence Red=Cloning site Green=Tags(s)
	MGDREQLLQRARLAEQAERYDDMASAMKAVTELNEPLSNEDRNLLSVAYKNVWGARRSSWRVISSIEQKT MADGNEKKLEKVKAYREKIEKELETVCNDVLSLLDKFLIKNCNDFQYESKVFYLMKMGDYRYRLAEVASG EKNSVVEASEAAYKEAFEISKEQMQPTHPIRLGLALNFSVFYIEIQNAPEQACLLAKQAFDDAIAELDT LNEDSYKDSTLIMQLLRDNLTLWTSQQDEEAGEGN
	TRTRPLEQKLISEEDLAANDILDYKDDDDKV
Tag:	C-Myc/DDK
Predicted MW:	28 kDa
Concentration:	>0.05 µg/µL as determined by microplate BCA method
Purity:	> 80% as determined by SDS-PAGE and Coomassie blue staining
Buffer:	25 mM Tris-HCl, 100 mM glycine, pH 7.3, 10% glycerol
Preparation:	Recombinant protein was captured through anti-DDK affinity column followed by conventional chromatography steps.
Note:	For testing in cell culture applications, please filter before use. Note that you may experience some loss of protein during the filtration process.
Storage:	Store at -80°C.
Stability:	Stable for 12 months from the date of receipt of the product under proper storage and handling conditions. Avoid repeated freeze-thaw cycles.
RefSeq:	<a href="#">NP_003396</a>
Locus ID:	7533



[View online »](#)

UniProt ID: [Q04917](#), [A0A024R1K7](#), [Q9H4N8](#)

RefSeq Size: 1807

Cytogenetics: 22q12.3

RefSeq ORF: 738

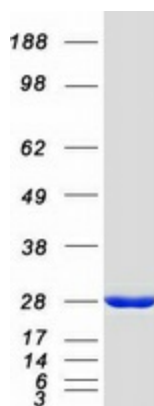
Synonyms: YWHA1

**Summary:** This gene product belongs to the 14-3-3 family of proteins which mediate signal transduction by binding to phosphoserine-containing proteins. This highly conserved protein family is found in both plants and mammals, and this protein is 99% identical to the mouse, rat and bovine orthologs. This gene contains a 7 bp repeat sequence in its 5' UTR, and changes in the number of this repeat have been associated with early-onset schizophrenia and psychotic bipolar disorder. [provided by RefSeq, Jun 2009]

**Protein Families:** Druggable Genome, Transcription Factors

**Protein Pathways:** Cell cycle, Neurotrophin signaling pathway, Oocyte meiosis

### Product images:



Coomassie blue staining of purified YWHAH protein (Cat# [TP300013]). The protein was produced from HEK293T cells transfected with YWHAH cDNA clone (Cat# [RC200013]) using MegaTran 2.0 (Cat# [TT210002]).