

Product datasheet for **TP300011L**

PSF2 (GINS2) (NM_016095) Human Recombinant Protein

Product data:

Product Type:	Recombinant Proteins
Description:	Recombinant protein of human GINS complex subunit 2 (Psf2 homolog) (GINS2), 1 mg
Species:	Human
Expression Host:	HEK293T
Expression cDNA Clone or AA Sequence:	>RC200011 protein sequence Red =Cloning site Green =Tags(s) MDAAEVEFLAEKELVTIIPNFSLDKIYLIGGDLGPFNPGLPVEVPLWLAINLKQRQKCRLLPPEWMDVEK LEKMRDHERKEETFTPMPSPYYMELTKLLNHASDNIPKADEIRTLVKDMWDTRIAKLRVSADSFVRQQE AHAKLDNLTLMIEINTSGTFLTQALNHMYKLRTNLQPLESTQSQDF TR TRPLEQKLISEEDLAANDILDYKDDDDKV
Tag:	C-Myc/DDK
Predicted MW:	21.2 kDa
Concentration:	>0.05 µg/µL as determined by microplate BCA method
Purity:	> 80% as determined by SDS-PAGE and Coomassie blue staining
Buffer:	25 mM Tris-HCl, 100 mM glycine, pH 7.3, 10% glycerol
Preparation:	Recombinant protein was captured through anti-DDK affinity column followed by conventional chromatography steps.
Note:	For testing in cell culture applications, please filter before use. Note that you may experience some loss of protein during the filtration process.
Storage:	Store at -80°C.
Stability:	Stable for 12 months from the date of receipt of the product under proper storage and handling conditions. Avoid repeated freeze-thaw cycles.
RefSeq:	<u>NP_057179</u>
Locus ID:	51659
UniProt ID:	<u>Q9Y248</u>
RefSeq Size:	1196


[View online »](#)

Cytogenetics: 16q24.1

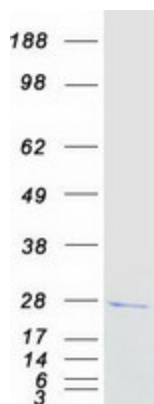
RefSeq ORF: 555

Synonyms: HSPC037; Pfs2; PSF2

Summary: The yeast heterotetrameric GINS complex is made up of Sld5 (GINS4; MIM 610611), Psf1 (GINS1; MIM 610608), Psf2, and Psf3 (GINS3; MIM 610610). The formation of this complex is essential for the initiation of DNA replication in yeast and *Xenopus* egg extracts (Ueno et al., 2005 [PubMed 16287864]). See GINS1 for additional information about the GINS complex. [supplied by OMIM, Mar 2008]

Protein Families: Druggable Genome

Product images:



Coomassie blue staining of purified GINS2 protein (Cat# [TP300011]). The protein was produced from HEK293T cells transfected with GINS2 cDNA clone (Cat# [RC200011]) using MegaTran 2.0 (Cat# [TT210002]).