

## Product datasheet for **TP300009M**

### PPME1 (NM\_016147) Human Recombinant Protein

#### Product data:

|                                       |  |
|---------------------------------------|--|
| Product Type:                         | Recombinant Proteins   |
| Description:                          | Recombinant protein of human protein phosphatase methylesterase 1 (PPME1), 100 µg  |
| Species:                              | Human  |
| Expression Host:                      | HEK293T  |
| Expression cDNA Clone or AA Sequence: | Recombinant protein was produced with TrueORF clone, RC200009.   |
| Tag:                                  | C-Myc/DDK  |
| Predicted MW:                         | 42.1 kDa   |
| Concentration:                        | >0.05 µg/µL as determined by microplate BCA method   |
| Purity:                               | > 80% as determined by SDS-PAGE and Coomassie blue staining  |
| Buffer:                               | 25 mM Tris-HCl, 100 mM glycine, pH 7.3, 10% glycerol   |
| Preparation:                          | Recombinant protein was captured through anti-DDK affinity column followed by conventional chromatography steps.                                     |
| Note:                                 | For testing in cell culture applications, please filter before use. Note that you may experience some loss of protein during the filtration process. |
| Storage:                              | Store at -80°C.  |
| Stability:                            | Stable for 12 months from the date of receipt of the product under proper storage and handling conditions. Avoid repeated freeze-thaw cycles.        |
| RefSeq:                               | <a href="#">NP_057231</a>  |
| Locus ID:                             | 51400  |
| UniProt ID:                           | <a href="#">Q9Y570</a> , <a href="#">A0A140VK39</a>  |
| RefSeq Size:                          | 2484   |
| Cytogenetics:                         | 11q13.4  |
| RefSeq ORF:                           | 1158   |
| Synonyms:                             | ABDH19; PME-1  |

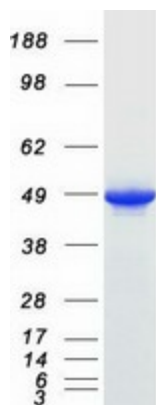


[View online »](#)

**Summary:** This gene encodes a protein phosphatase methyltransferase localized to the nucleus. The encoded protein acts on the protein phosphatase-2A catalytic subunit and supports the ERK pathway through dephosphorylation of regulatory proteins. It plays a role in malignant glioma progression. Alternative splicing results in multiple transcript variants. [provided by RefSeq, Oct 2012]

**Protein Families:** Druggable Genome

**Product images:**



Coomassie blue staining of purified PPME1 protein (Cat# [TP300009]). The protein was produced from HEK293T cells transfected with PPME1 cDNA clone (Cat# [RC200009]) using MegaTran 2.0 (Cat# [TT210002]).