

Product datasheet for **TP300009L**

PPME1 (NM_016147) Human Recombinant Protein

Product data:

Product Type:	Recombinant Proteins
Description:	Recombinant protein of human protein phosphatase methylesterase 1 (PPME1), 1 mg
Species:	Human
Expression Host:	HEK293T
Expression cDNA Clone or AA Sequence:	Recombinant protein was produced with TrueORF clone, RC200009.
Tag:	C-Myc/DDK
Predicted MW:	42.1 kDa
Concentration:	>0.05 µg/µL as determined by microplate BCA method
Purity:	> 80% as determined by SDS-PAGE and Coomassie blue staining
Buffer:	25 mM Tris-HCl, 100 mM glycine, pH 7.3, 10% glycerol
Preparation:	Recombinant protein was captured through anti-DDK affinity column followed by conventional chromatography steps.
Note:	For testing in cell culture applications, please filter before use. Note that you may experience some loss of protein during the filtration process.
Storage:	Store at -80°C.
Stability:	Stable for 12 months from the date of receipt of the product under proper storage and handling conditions. Avoid repeated freeze-thaw cycles.
RefSeq:	NP_057231
Locus ID:	51400
UniProt ID:	Q9Y570 , A0A140VK39
RefSeq Size:	2484
Cytogenetics:	11q13.4
RefSeq ORF:	1158
Synonyms:	ABDH19; PME-1

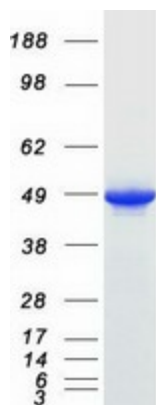


[View online »](#)

Summary: This gene encodes a protein phosphatase methyltransferase localized to the nucleus. The encoded protein acts on the protein phosphatase-2A catalytic subunit and supports the ERK pathway through dephosphorylation of regulatory proteins. It plays a role in malignant glioma progression. Alternative splicing results in multiple transcript variants. [provided by RefSeq, Oct 2012]

Protein Families: Druggable Genome

Product images:



Coomassie blue staining of purified PPME1 protein (Cat# [TP300009]). The protein was produced from HEK293T cells transfected with PPME1 cDNA clone (Cat# [RC200009]) using MegaTran 2.0 (Cat# [TT210002]).