

Product datasheet for **TL710851V**

Pdx1 Rat shRNA Lentiviral Particle (Locus ID 29535)

Product data:

Product Type:	shRNA Lentiviral Particles
Product Name:	Pdx1 Rat shRNA Lentiviral Particle (Locus ID 29535)
Locus ID:	29535
Synonyms:	Idx1; Ipf1; Stf1
Vector:	pGFP-C-shLenti (TR30023)
Format:	Lentiviral particles
Components:	Pdx1 - Rat shRNA lentiviral particles (4 unique 29mer target-specific shRNA, 1 scramble control), 0.5 ml each, >10 ⁷ TU/ml.
RefSeq:	NM_022852 , NM_022852.1 , NM_022852.2 , NM_022852.3
UniProt ID:	P52947
Summary:	Activates insulin and somatostatin gene transcription. Key regulator of islet peptide hormone expression but also responsible for the development of the pancreas, most probably by determining maturation and differentiation of common pancreatic precursor cells in the developing gut. As part of a PDX1:PBX1b:MEIS2b complex in pancreatic acinar cells is involved in the transcriptional activation of the ELA1 enhancer; the complex binds to the enhancer B element and cooperates with the transcription factor 1 complex (PTF1) bound to the enhancer A element. Binds the DNA sequence 5'-CC[CT]TAATGGG-3'. [UniProtKB/Swiss-Prot Function]
shRNA Design:	These shRNA constructs were designed against multiple splice variants at this gene locus. To be certain that your variant of interest is targeted, please contact techsupport@origene.com . If you need a special design or shRNA sequence, please utilize our custom shRNA service .

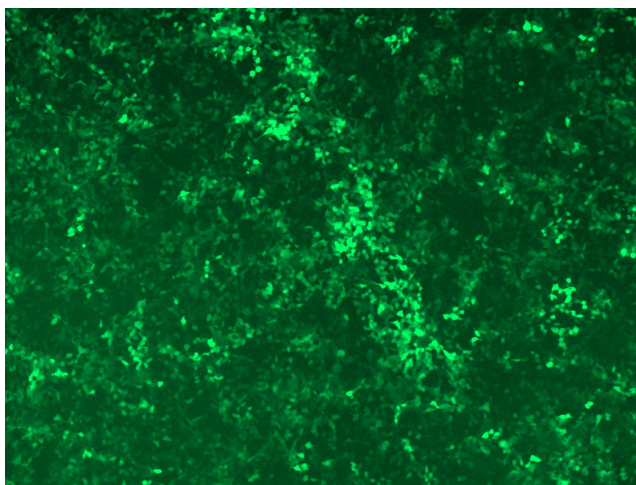


[View online »](#)

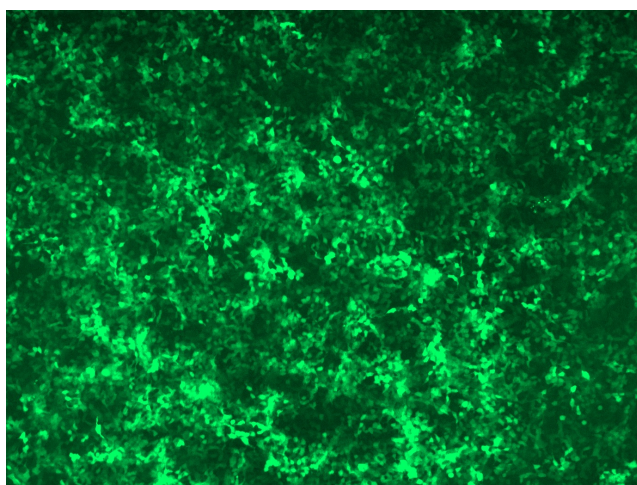
**Performance
Guaranteed:**

OriGene guarantees that the sequences in the shRNA expression cassettes are verified to correspond to the target gene with 100% identity. One of the four constructs at minimum are guaranteed to produce 70% or more gene expression knock-down provided a minimum transfection efficiency of 80% is achieved. Western Blot data is recommended over qPCR to evaluate the silencing effect of the shRNA constructs 72 hrs post transfection. To properly assess knockdown, the gene expression level from the included scramble control vector must be used in comparison with the target-specific shRNA transfected samples.

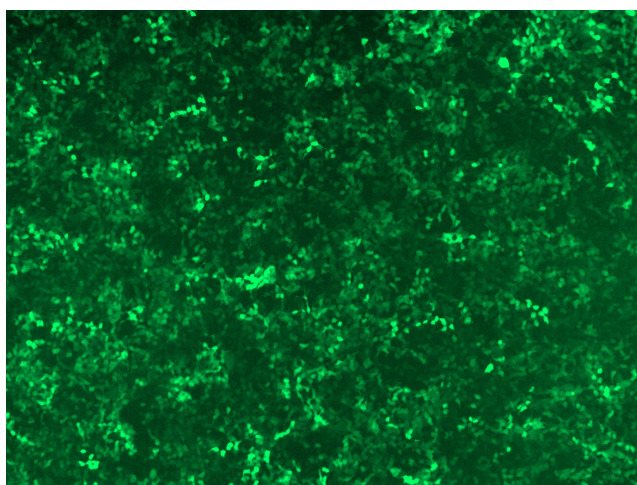
For non-conforming shRNA, requests for replacement product must be made within ninety (90) days from the date of delivery of the shRNA kit. To arrange for a free replacement with newly designed constructs, please contact Technical Services at techsupport@origene.com. Please provide your data indicating the transfection efficiency and measurement of gene expression knockdown compared to the scrambled shRNA control (Western Blot data preferred).

Product images:

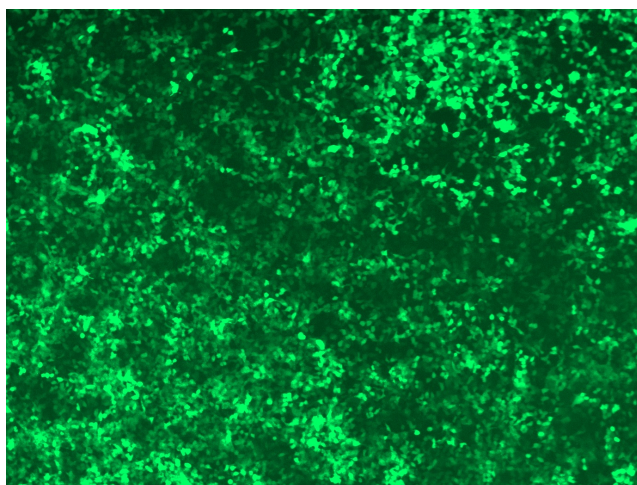
GFP signal was observed under microscope at 48 hours after transduction of TL710851A virus into HEK293 cells. TL710851A virus was prepared using lenti-shRNA TL710851A and [TR30037] packaging kit.



GFP signal was observed under microscope at 48 hours after transduction of TL710851B virus into HEK293 cells. TL710851B virus was prepared using lenti-shRNA TL710851B and [TR30037] packaging kit.



GFP signal was observed under microscope at 48 hours after transduction of [TL710851C] virus into HEK293 cells. [TL710851C] virus was prepared using lenti-shRNA [TL710851C] and [TR30037] packaging kit.



GFP signal was observed under microscope at 48 hours after transduction of [TL710851D] virus into HEK293 cells. [TL710851D] virus was prepared using lenti-shRNA [TL710851D] and [TR30037] packaging kit.