

Product datasheet for **TL515910V**

Mark1 Mouse shRNA Lentiviral Particle (Locus ID 226778)

Product data:

Product Type:	shRNA Lentiviral Particles
Product Name:	Mark1 Mouse shRNA Lentiviral Particle (Locus ID 226778)
Locus ID:	226778
Synonyms:	AW491150; B930025N23Rik; Emk3; mKIAA1477; mPar-1c; Par-1c
Vector:	pGFP-C-shLenti (TR30023)
Format:	Lentiviral particles
Components:	Mark1 - Mouse shRNA lentiviral particles (4 unique 29mer target-specific shRNA, 1 scramble control), 0.5 ml each, >10 ⁷ TU/ml.
RefSeq:	BC112400 , NM_145515 , NM_145515.1 , NM_145515.2
UniProt ID:	Q8VHJ5
Summary:	Serine/threonine-protein kinase (By similarity). Involved in cell polarity and microtubule dynamics regulation. Phosphorylates DCX, MAP2 and MAP4. Phosphorylates the microtubule-associated protein MAPT/TAU (By similarity). Involved in cell polarity by phosphorylating the microtubule-associated proteins MAP2, MAP4 and MAPT/TAU at KXGS motifs, causing detachment from microtubules, and their disassembly. Involved in the regulation of neuronal migration through its dual activities in regulating cellular polarity and microtubule dynamics, possibly by phosphorylating and regulating DCX. Also acts as a positive regulator of the Wnt signaling pathway, probably by mediating phosphorylation of dishevelled proteins (DVL1, DVL2 and/or DVL3).[UniProtKB/Swiss-Prot Function]
shRNA Design:	These shRNA constructs were designed against multiple splice variants at this gene locus. To be certain that your variant of interest is targeted, please contact techsupport@origene.com . If you need a special design or shRNA sequence, please utilize our custom shRNA service .

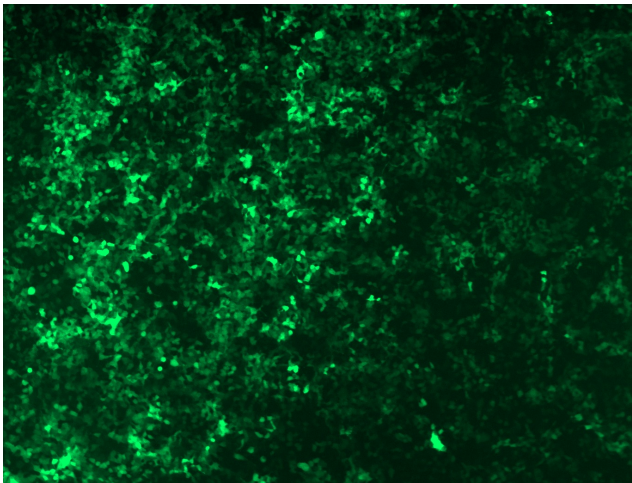


[View online »](#)

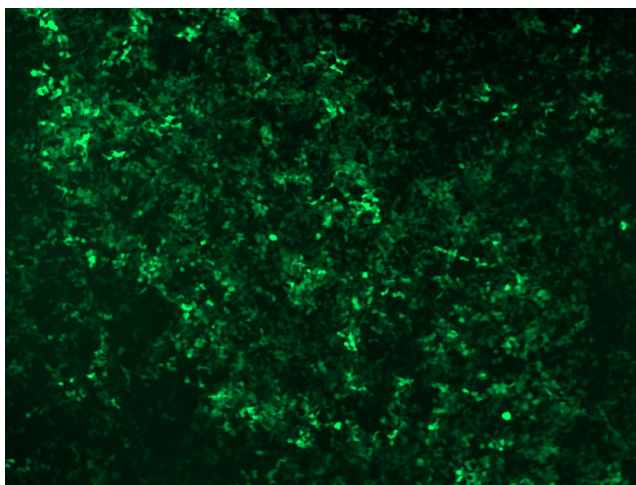
**Performance
Guaranteed:**

OriGene guarantees that the sequences in the shRNA expression cassettes are verified to correspond to the target gene with 100% identity. One of the four constructs at minimum are guaranteed to produce 70% or more gene expression knock-down provided a minimum transfection efficiency of 80% is achieved. Western Blot data is recommended over qPCR to evaluate the silencing effect of the shRNA constructs 72 hrs post transfection. To properly assess knockdown, the gene expression level from the included scramble control vector must be used in comparison with the target-specific shRNA transfected samples.

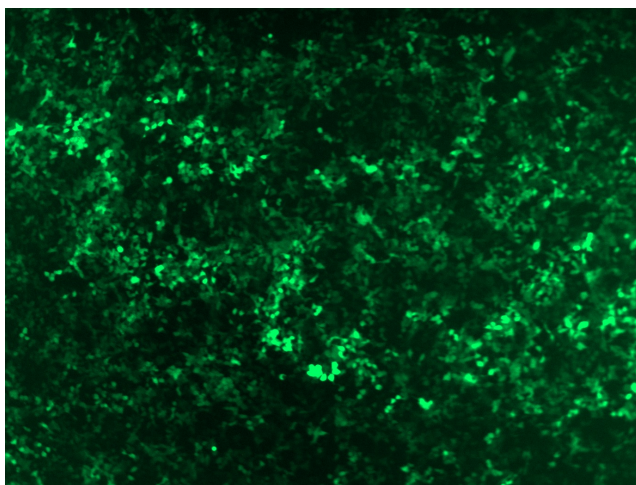
For non-conforming shRNA, requests for replacement product must be made within ninety (90) days from the date of delivery of the shRNA kit. To arrange for a free replacement with newly designed constructs, please contact Technical Services at techsupport@origene.com. Please provide your data indicating the transfection efficiency and measurement of gene expression knockdown compared to the scrambled shRNA control (Western Blot data preferred).

Product images:

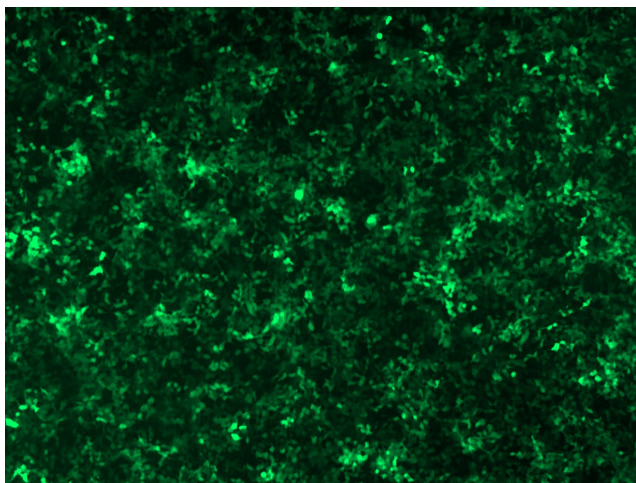
GFP signal was observed under microscope at 48 hours after transduction of TL515910A virus into HEK293 cells. TL515910A virus was prepared using lenti-shRNA TL515910A and [TR30037] packaging kit.



GFP signal was observed under microscope at 48 hours after transduction of TL515910B virus into HEK293 cells. TL515910B virus was prepared using lenti-shRNA TL515910B and [TR30037] packaging kit.



GFP signal was observed under microscope at 48 hours after transduction of [TL515910C] virus into HEK293 cells. [TL515910C] virus was prepared using lenti-shRNA [TL515910C] and [TR30037] packaging kit.



GFP signal was observed under microscope at 48 hours after transduction of [TL515910D] virus into HEK293 cells. [TL515910D] virus was prepared using lenti-shRNA [TL515910D] and [TR30037] packaging kit.