

## Product datasheet for **TL511157**

### **Abl1 Mouse shRNA Plasmid (Locus ID 11350)**

#### **Product data:**

Product Type:	shRNA Plasmids
Product Name:	Abl1 Mouse shRNA Plasmid (Locus ID 11350)
Locus ID:	11350
Synonyms:	Abl; AI325092; c-Abl; E430008G22Rik
Vector:	pGFP-C-shLenti (TR30023)
E. coli Selection:	Chloramphenicol (34 ug/ml)
Mammalian Cell Selection:	Puromycin
Format:	Lentiviral plasmids
Components:	Abl1 - Mouse, 4 unique 29mer shRNA constructs in lentiviral GFP vector(Gene ID = 11350). 5µg purified plasmid DNA per construct 29-mer scrambled shRNA cassette in pGFP-C-shLenti Vector, TR30021, included for free.
RefSeq:	<a href="#">BC059260</a> , <a href="#">BC103770</a> , <a href="#">NM_001112703</a> , <a href="#">NM_001283045</a> , <a href="#">NM_001283046</a> , <a href="#">NM_001283047</a> , <a href="#">NM_009594</a> , <a href="#">NM_009594.1</a> , <a href="#">NM_009594.2</a> , <a href="#">NM_009594.3</a> , <a href="#">NM_009594.4</a> , <a href="#">NM_001112703.1</a> , <a href="#">NM_001112703.2</a> , <a href="#">NM_001283047.1</a> , <a href="#">NM_001283045.1</a> , <a href="#">NM_001283046.1</a> , <a href="#">BC013801</a> , <a href="#">BC035521</a> , <a href="#">BM949741</a>
UniProt ID:	<a href="#">P00520</a>



[View online »](#)

**Summary:**

Non-receptor tyrosine-protein kinase that plays a role in many key processes linked to cell growth and survival such as cytoskeleton remodeling in response to extracellular stimuli, cell motility and adhesion, receptor endocytosis, autophagy, DNA damage response and apoptosis. Coordinates actin remodeling through tyrosine phosphorylation of proteins controlling cytoskeleton dynamics like WASF3 (involved in branch formation); ANXA1 (involved in membrane anchoring); DBN1, DBNL, CTTN, RAPH1 and ENAH (involved in signaling); or MAPT and PXN (microtubule-binding proteins). Phosphorylation of WASF3 is critical for the stimulation of lamellipodia formation and cell migration. Involved in the regulation of cell adhesion and motility through phosphorylation of key regulators of these processes such as BCAR1, CRK, CRKL, DOK1, EFS or NEDD9. Phosphorylates multiple receptor tyrosine kinases and more particularly promotes endocytosis of EGFR, facilitates the formation of neuromuscular synapses through MUSK, inhibits PDGFRB-mediated chemotaxis and modulates the endocytosis of activated B-cell receptor complexes. Other substrates which are involved in endocytosis regulation are the caveolin (CAV1) and RIN1. Moreover, ABL1 regulates the CBL family of ubiquitin ligases that drive receptor down-regulation and actin remodeling. Phosphorylation of CBL leads to increased EGFR stability. Involved in late-stage autophagy by regulating positively the trafficking and function of lysosomal components. ABL1 targets to mitochondria in response to oxidative stress and thereby mediates mitochondrial dysfunction and cell death. In response to oxidative stress, phosphorylates serine/threonine kinase PRKD2 at 'Tyr-717' (By similarity). ABL1 is also translocated in the nucleus where it has DNA-binding activity and is involved in DNA-damage response and apoptosis. Many substrates are known mediators of DNA repair: DDB1, DDB2, ERCC3, ERCC6, RAD9A, RAD51, RAD52 or WRN. Activates the proapoptotic pathway when the DNA damage is too severe to be repaired. Phosphorylates TP73, a primary regulator for this type of damage-induced apoptosis. Phosphorylates the caspase CASP9 on 'Tyr-191' and regulates its processing in the apoptotic response to DNA damage. Phosphorylates PSMA7 that leads to an inhibition of proteasomal activity and cell cycle transition blocks. Regulates T-cell differentiation in a TBX21-dependent manner (PubMed:21690296). Phosphorylates TBX21 on tyrosine residues leading to an enhancement of its transcriptional activator activity (PubMed:21690296).[UniProtKB/Swiss-Prot Function]

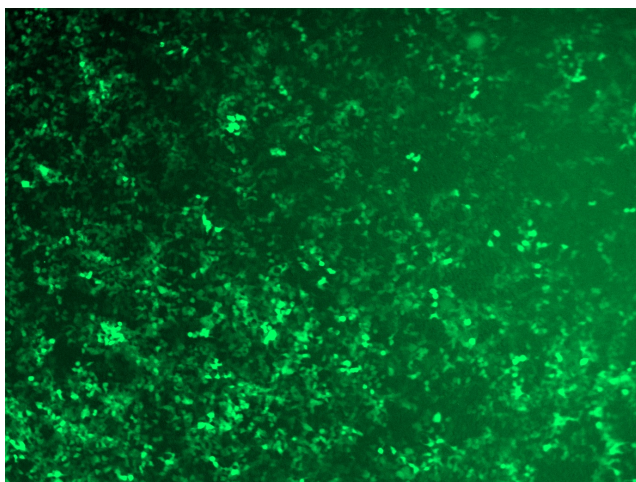
**shRNA Design:**

These shRNA constructs were designed against multiple splice variants at this gene locus. To be certain that your variant of interest is targeted, please contact [techsupport@origene.com](mailto:techsupport@origene.com). If you need a special design or shRNA sequence, please utilize our [custom shRNA service](#).

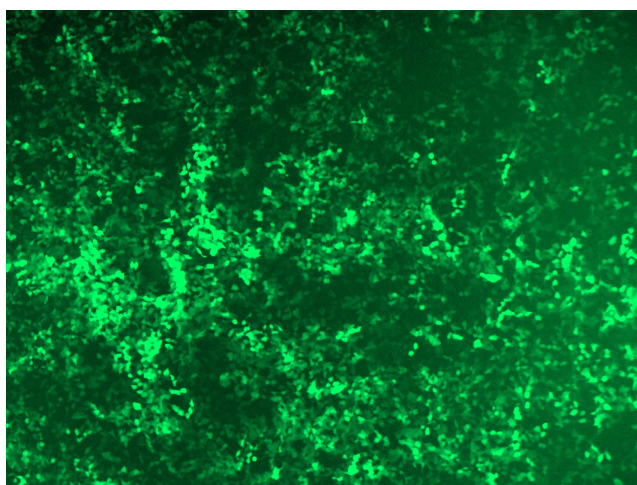
**Performance  
Guaranteed:**

OriGene guarantees that the sequences in the shRNA expression cassettes are verified to correspond to the target gene with 100% identity. One of the four constructs at minimum are guaranteed to produce 70% or more gene expression knock-down provided a minimum transfection efficiency of 80% is achieved. Western Blot data is recommended over qPCR to evaluate the silencing effect of the shRNA constructs 72 hrs post transfection. To properly assess knockdown, the gene expression level from the included scramble control vector must be used in comparison with the target-specific shRNA transfected samples.

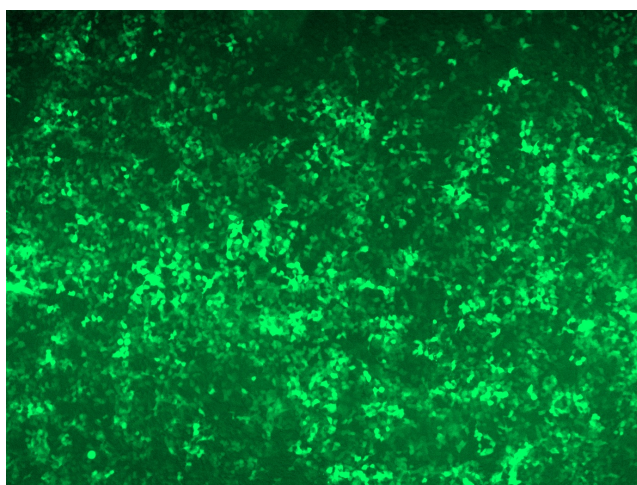
For non-conforming shRNA, requests for replacement product must be made within ninety (90) days from the date of delivery of the shRNA kit. To arrange for a free replacement with newly designed constructs, please contact Technical Services at [techsupport@origene.com](mailto:techsupport@origene.com). Please provide your data indicating the transfection efficiency and measurement of gene expression knockdown compared to the scrambled shRNA control (Western Blot data preferred).

**Product images:**

GFP signal was observed under microscope at 48 hours after transduction of TL511157B virus into HEK293 cells. TL511157B virus was prepared using lenti-shRNA TL511157B and [TR30037] packaging kit.



GFP signal was observed under microscope at 48 hours after transduction of [TL511157C] virus into HEK293 cells. [TL511157C] virus was prepared using lenti-shRNA [TL511157C] and [TR30037] packaging kit.



GFP signal was observed under microscope at 48 hours after transduction of [TL511157D] virus into HEK293 cells. [TL511157D] virus was prepared using lenti-shRNA [TL511157D] and [TR30037] packaging kit.