

Product datasheet for **TL510971**

Errfi1 Mouse shRNA Plasmid (Locus ID 74155)

Product data:

Product Type:	shRNA Plasmids
Product Name:	Errfi1 Mouse shRNA Plasmid (Locus ID 74155)
Locus ID:	74155
Synonyms:	1300002F13Rik; AI788755; Mig-6; Mig6; RALT
Vector:	pGFP-C-shLenti (TR30023)
E. coli Selection:	Chloramphenicol (34 ug/ml)
Mammalian Cell Selection:	Puromycin
Format:	Lentiviral plasmids
Components:	Errfi1 - Mouse, 4 unique 29mer shRNA constructs in lentiviral GFP vector(Gene ID = 74155). 5µg purified plasmid DNA per construct 29-mer scrambled shRNA cassette in pGFP-C-shLenti Vector, TR30021, included for free.
RefSeq:	BC005546 , BC057646 , NM_133753 , NM_001356323 , NM_133753.1 , NM_133753.2
UniProt ID:	Q99JZ7
Summary:	Negative regulator of EGFR signaling in skin morphogenesis. Acts as a negative regulator for several EGFR family members, including ERBB2, ERBB3 and ERBB4. Inhibits EGFR catalytic activity by interfering with its dimerization. Inhibits autophosphorylation of EGFR, ERBB2 and ERBB4. Important for normal keratinocyte proliferation and differentiation. Plays a role in modulating the response to steroid hormones in the uterus. Required for normal response to progesterone in the uterus and for fertility. Mediates epithelial estrogen responses in the uterus by regulating ESR1 levels and activation. Important for regulation of endometrium cell proliferation. Important for normal prenatal and perinatal lung development. [UniProtKB/Swiss-Prot Function]
shRNA Design:	These shRNA constructs were designed against multiple splice variants at this gene locus. To be certain that your variant of interest is targeted, please contact techsupport@origene.com . If you need a special design or shRNA sequence, please utilize our custom shRNA service .

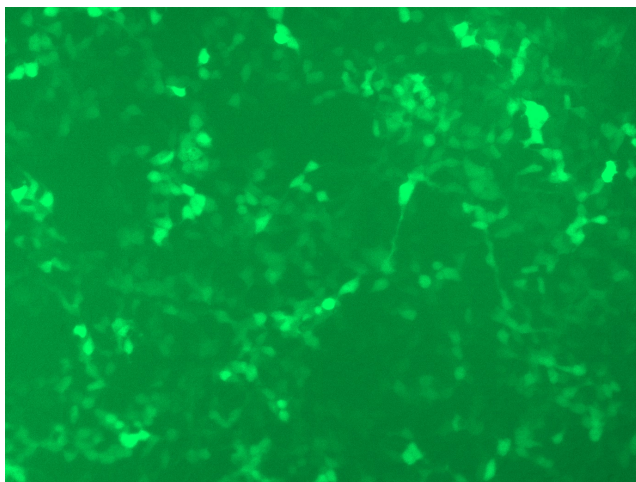


[View online »](#)

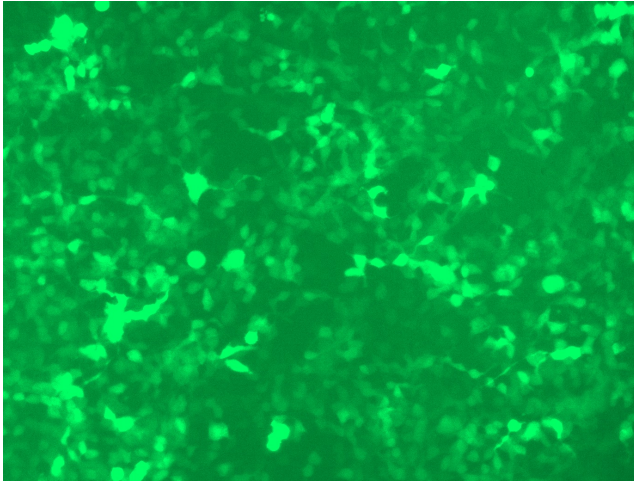
**Performance
Guaranteed:**

OriGene guarantees that the sequences in the shRNA expression cassettes are verified to correspond to the target gene with 100% identity. One of the four constructs at minimum are guaranteed to produce 70% or more gene expression knock-down provided a minimum transfection efficiency of 80% is achieved. Western Blot data is recommended over qPCR to evaluate the silencing effect of the shRNA constructs 72 hrs post transfection. To properly assess knockdown, the gene expression level from the included scramble control vector must be used in comparison with the target-specific shRNA transfected samples.

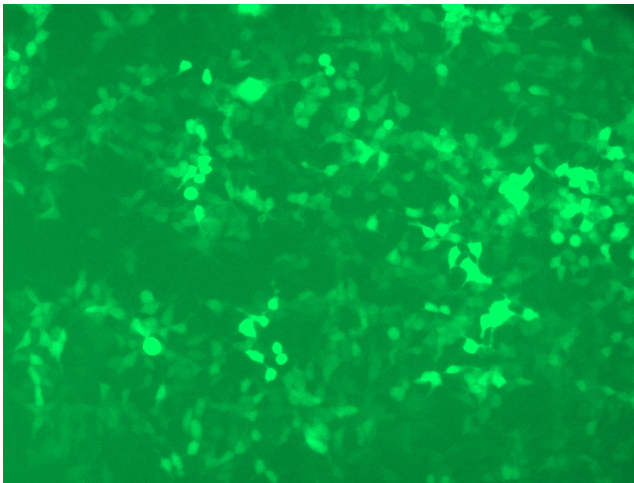
For non-conforming shRNA, requests for replacement product must be made within ninety (90) days from the date of delivery of the shRNA kit. To arrange for a free replacement with newly designed constructs, please contact Technical Services at techsupport@origene.com. Please provide your data indicating the transfection efficiency and measurement of gene expression knockdown compared to the scrambled shRNA control (Western Blot data preferred).

Product images:

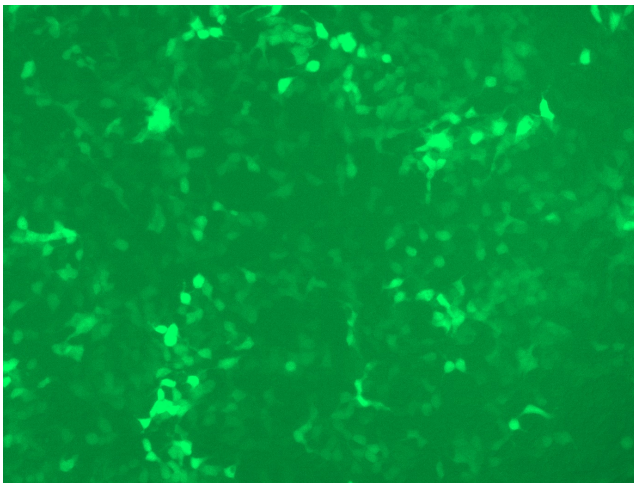
GFP signal was observed under microscope at 48 hours after transduction of TL510971A virus into HEK293 cells. TL510971A virus was prepared using lenti-shRNA TL510971A and [TR30037] packaging kit.



GFP signal was observed under microscope at 48 hours after transduction of TL510971B virus into HEK293 cells. TL510971B virus was prepared using lenti-shRNA TL510971B and [TR30037] packaging kit.



GFP signal was observed under microscope at 48 hours after transduction of [TL510971C] virus into HEK293 cells. [TL510971C] virus was prepared using lenti-shRNA [TL510971C] and [TR30037] packaging kit.



GFP signal was observed under microscope at 48 hours after transduction of [TL510971D] virus into HEK293 cells. [TL510971D] virus was prepared using lenti-shRNA [TL510971D] and [TR30037] packaging kit.