

Product datasheet for **TL500955**

Hgf Mouse shRNA Plasmid (Locus ID 15234)

Product data:

Product Type:	shRNA Plasmids
Product Name:	Hgf Mouse shRNA Plasmid (Locus ID 15234)
Locus ID:	15234
Synonyms:	C230052L06Rik; HGF/S; HGF/SF; NK; NK1; NK2; SF; SF/HG; SF/HGF
Vector:	pGFP-C-shLenti (TR30023)
E. coli Selection:	Chloramphenicol (34 ug/ml)
Mammalian Cell Selection:	Puromycin
Format:	Lentiviral plasmids
Components:	Hgf - Mouse, 4 unique 29mer shRNA constructs in lentiviral GFP vector(Gene ID = 15234). 5µg purified plasmid DNA per construct 29-mer scrambled shRNA cassette in pGFP-C-shLenti Vector, TR30021, included for free.
RefSeq:	BC119228 , NM_001289458 , NM_001289459 , NM_001289460 , NM_001289461 , NM_010427 , NM_010427.1 , NM_010427.2 , NM_010427.3 , NM_010427.4 , NM_010427.5 , NM_001289460.1 , NM_001289460.2 , NM_001289461.1 , NM_001289458.1 , NM_001289459.1 , BC144764
UniProt ID:	Q08048
Summary:	This gene encodes a protein that binds to the hepatocyte growth factor receptor to regulate cell growth, cell motility and morphogenesis in numerous cell and tissue types. The encoded preproprotein is proteolytically processed to generate multiple protein products, including the hepatocyte growth factor alpha and beta chains, which heterodimerize to form the mature active protein. Although this protein is a member of the peptidase S1 family of serine proteases, it lacks peptidase activity. Homozygous knockout mice for this gene exhibit embryonic lethality due to impaired development of the placenta and liver. Alternative splicing results in multiple transcript variants encoding different isoforms. [provided by RefSeq, Sep 2015]
shRNA Design:	These shRNA constructs were designed against multiple splice variants at this gene locus. To be certain that your variant of interest is targeted, please contact techsupport@origene.com . If you need a special design or shRNA sequence, please utilize our custom shRNA service .

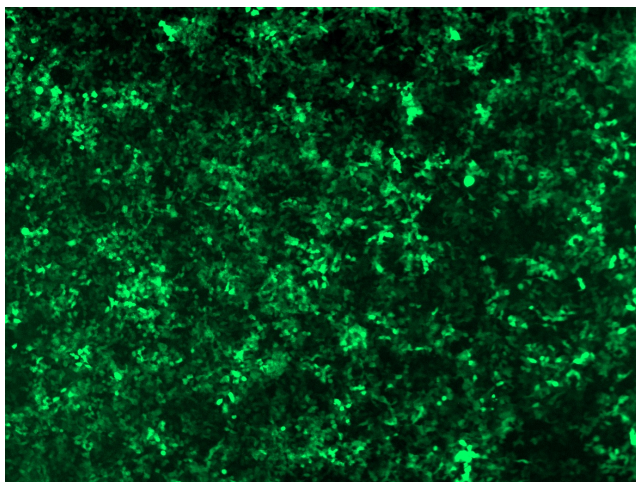


[View online »](#)

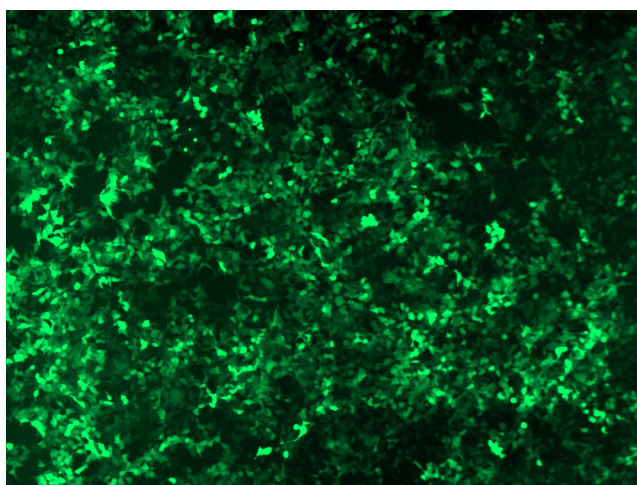
**Performance
Guaranteed:**

OriGene guarantees that the sequences in the shRNA expression cassettes are verified to correspond to the target gene with 100% identity. One of the four constructs at minimum are guaranteed to produce 70% or more gene expression knock-down provided a minimum transfection efficiency of 80% is achieved. Western Blot data is recommended over qPCR to evaluate the silencing effect of the shRNA constructs 72 hrs post transfection. To properly assess knockdown, the gene expression level from the included scramble control vector must be used in comparison with the target-specific shRNA transfected samples.

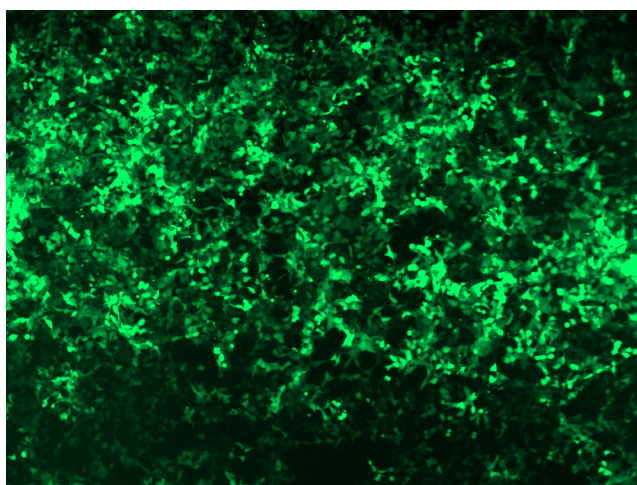
For non-conforming shRNA, requests for replacement product must be made within ninety (90) days from the date of delivery of the shRNA kit. To arrange for a free replacement with newly designed constructs, please contact Technical Services at techsupport@origene.com. Please provide your data indicating the transfection efficiency and measurement of gene expression knockdown compared to the scrambled shRNA control (Western Blot data preferred).

Product images:

GFP signal was observed under microscope at 48 hours after transduction of TL500955B virus into HEK293 cells. TL500955B virus was prepared using lenti-shRNA TL500955B and [TR30037] packaging kit.



GFP signal was observed under microscope at 48 hours after transduction of [TL500955C] virus into HEK293 cells. [TL500955C] virus was prepared using lenti-shRNA [TL500955C] and [TR30037] packaging kit.



GFP signal was observed under microscope at 48 hours after transduction of [TL500955D] virus into HEK293 cells. [TL500955D] virus was prepared using lenti-shRNA [TL500955D] and [TR30037] packaging kit.