

Product datasheet for **TL320250**

c Abl (ABL1) Human shRNA Plasmid Kit (Locus ID 25)

Product data:

Product Type:	shRNA Plasmids
Product Name:	c Abl (ABL1) Human shRNA Plasmid Kit (Locus ID 25)
Locus ID:	25
Synonyms:	ABL; BCR-ABL; bcr/abl; c-ABL; c-ABL1; CHDSKM; JTK7; p150; v-abl
Vector:	pGFP-C-shLenti (TR30023)
E. coli Selection:	Chloramphenicol (34 ug/ml)
Mammalian Cell Selection:	Puromycin
Format:	Lentiviral plasmids
Components:	ABL1 - Human, 4 unique 29mer shRNA constructs in lentiviral GFP vector(Gene ID = 25). 5µg purified plasmid DNA per construct 29-mer scrambled shRNA cassette in pGFP-C-shLenti Vector, TR30021, included for free.
RefSeq:	NM_005157 , NM_007313 , NM_007313.1 , NM_007313.2 , NM_005157.1 , NM_005157.2 , NM_005157.3 , NM_005157.4 , NM_005157.5 , BC107069 , BC107070 , BC117451 , NM_005157.6
UniProt ID:	P00519
Summary:	This gene is a protooncogene that encodes a protein tyrosine kinase involved in a variety of cellular processes, including cell division, adhesion, differentiation, and response to stress. The activity of the protein is negatively regulated by its SH3 domain, whereby deletion of the region encoding this domain results in an oncogene. The ubiquitously expressed protein has DNA-binding activity that is regulated by CDC2-mediated phosphorylation, suggesting a cell cycle function. This gene has been found fused to a variety of translocation partner genes in various leukemias, most notably the t(9;22) translocation that results in a fusion with the 5' end of the breakpoint cluster region gene (BCR; MIM:151410). Alternative splicing of this gene results in two transcript variants, which contain alternative first exons that are spliced to the remaining common exons. [provided by RefSeq, Aug 2014]
shRNA Design:	These shRNA constructs were designed against multiple splice variants at this gene locus. To be certain that your variant of interest is targeted, please contact techsupport@origene.com . If you need a special design or shRNA sequence, please utilize our custom shRNA service .

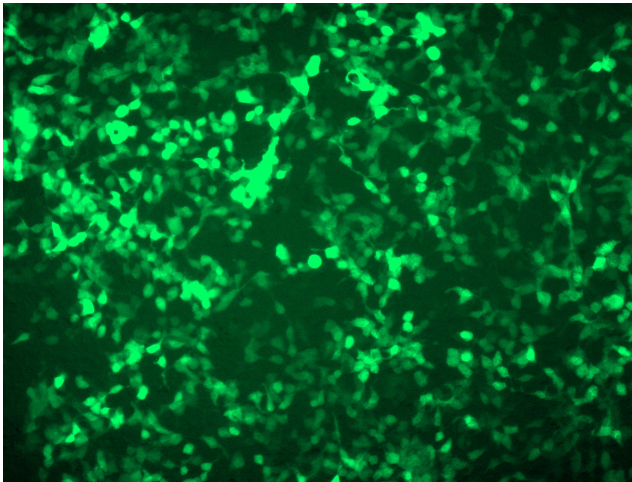


[View online »](#)

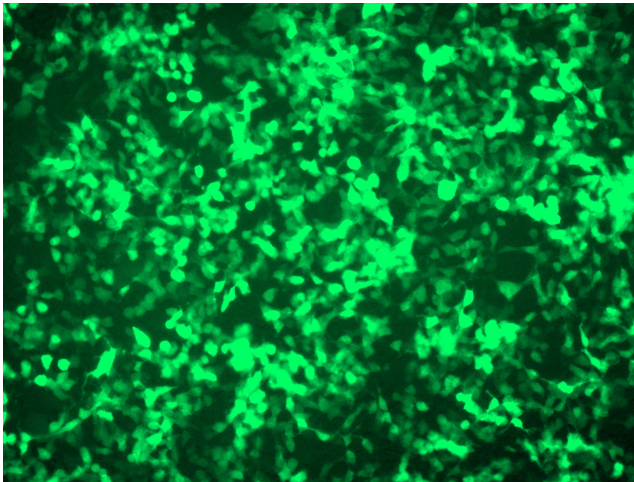
**Performance
Guaranteed:**

OriGene guarantees that the sequences in the shRNA expression cassettes are verified to correspond to the target gene with 100% identity. One of the four constructs at minimum are guaranteed to produce 70% or more gene expression knock-down provided a minimum transfection efficiency of 80% is achieved. Western Blot data is recommended over qPCR to evaluate the silencing effect of the shRNA constructs 72 hrs post transfection. To properly assess knockdown, the gene expression level from the included scramble control vector must be used in comparison with the target-specific shRNA transfected samples.

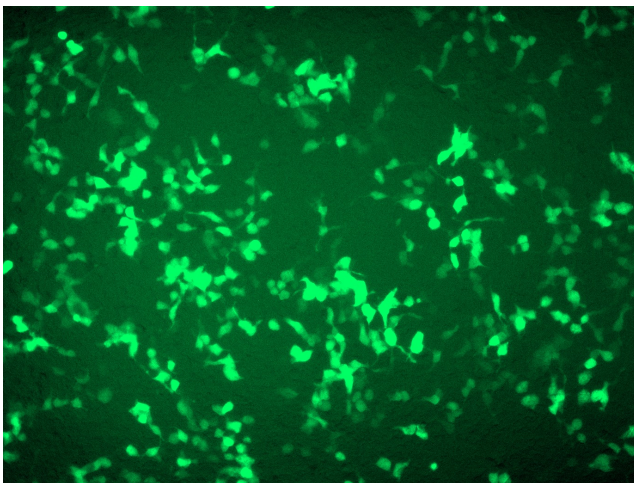
For non-conforming shRNA, requests for replacement product must be made within ninety (90) days from the date of delivery of the shRNA kit. To arrange for a free replacement with newly designed constructs, please contact Technical Services at techsupport@origene.com. Please provide your data indicating the transfection efficiency and measurement of gene expression knockdown compared to the scrambled shRNA control (Western Blot data preferred).

Product images:

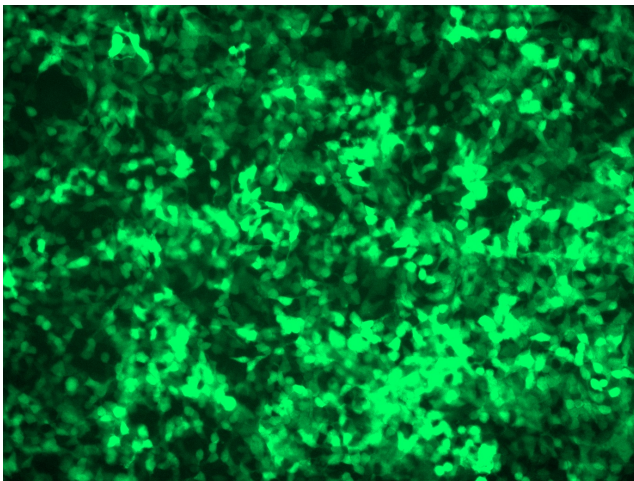
GFP signal was observed under microscope at 48 hours after transduction of TL320250A virus into HEK293 cells. TL320250A virus was prepared using lenti-shRNA TL320250A and [TR30037] packaging kit.



GFP signal was observed under microscope at 48 hours after transduction of TL320250B virus into HEK293 cells. TL320250B virus was prepared using lenti-shRNA TL320250B and [TR30037] packaging kit.



GFP signal was observed under microscope at 48 hours after transduction of [TL320250C] virus into HEK293 cells. [TL320250C] virus was prepared using lenti-shRNA [TL320250C] and [TR30037] packaging kit.



GFP signal was observed under microscope at 48 hours after transduction of [TL320250D] virus into HEK293 cells. [TL320250D] virus was prepared using lenti-shRNA [TL320250D] and [TR30037] packaging kit.