

## Product datasheet for **TL313125V**

### EZH1 Human shRNA Lentiviral Particle (Locus ID 2145)

#### Product data:

Product Type:	shRNA Lentiviral Particles
Product Name:	EZH1 Human shRNA Lentiviral Particle (Locus ID 2145)
Locus ID:	2145
Synonyms:	KMT6B
Vector:	pGFP-C-shLenti (TR30023)
Format:	Lentiviral particles
Components:	EZH1 - Human shRNA lentiviral particles (4 unique 29mer target-specific shRNA, 1 scramble control), 0.5 ml each, >10 <sup>7</sup> TU/ml.
RefSeq:	<a href="#">NM_001991</a> , <a href="#">NM_001321079</a> , <a href="#">NM_001321081</a> , <a href="#">NM_001321082</a> , <a href="#">NM_001991.1</a> , <a href="#">NM_001991.2</a> , <a href="#">NM_001991.3</a> , <a href="#">NM_001991.4</a> , <a href="#">BC015882</a> , <a href="#">BC015882.1</a> , <a href="#">NM_001991.5</a>
UniProt ID:	<a href="#">Q92800</a>
Summary:	EZH1 is a component of a noncanonical Polycomb repressive complex-2 (PRC2) that mediates methylation of histone H3 (see MIM 602812) lys27 (H3K27) and functions in the maintenance of embryonic stem cell pluripotency and plasticity (Shen et al., 2008 [PubMed 19026780]). [supplied by OMIM, Mar 2009]
shRNA Design:	These shRNA constructs were designed against multiple splice variants at this gene locus. To be certain that your variant of interest is targeted, please contact <a href="mailto:techsupport@origene.com">techsupport@origene.com</a> . If you need a special design or shRNA sequence, please utilize our <a href="#">custom shRNA service</a> .

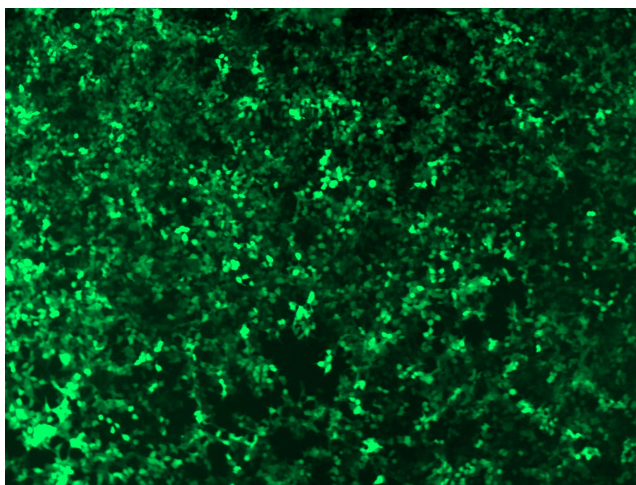


[View online »](#)

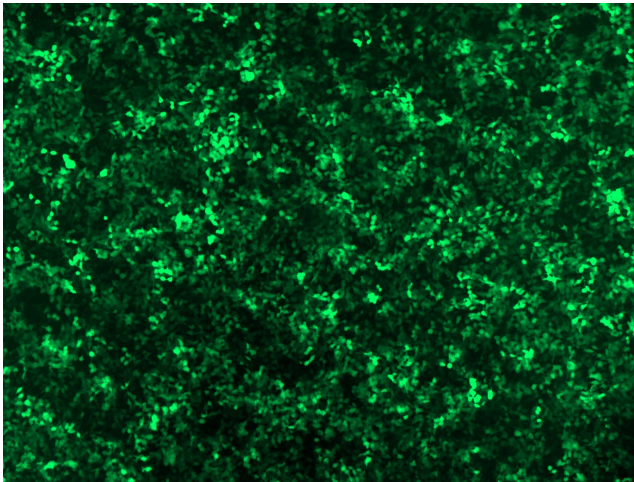
**Performance  
Guaranteed:**

OriGene guarantees that the sequences in the shRNA expression cassettes are verified to correspond to the target gene with 100% identity. One of the four constructs at minimum are guaranteed to produce 70% or more gene expression knock-down provided a minimum transfection efficiency of 80% is achieved. Western Blot data is recommended over qPCR to evaluate the silencing effect of the shRNA constructs 72 hrs post transfection. To properly assess knockdown, the gene expression level from the included scramble control vector must be used in comparison with the target-specific shRNA transfected samples.

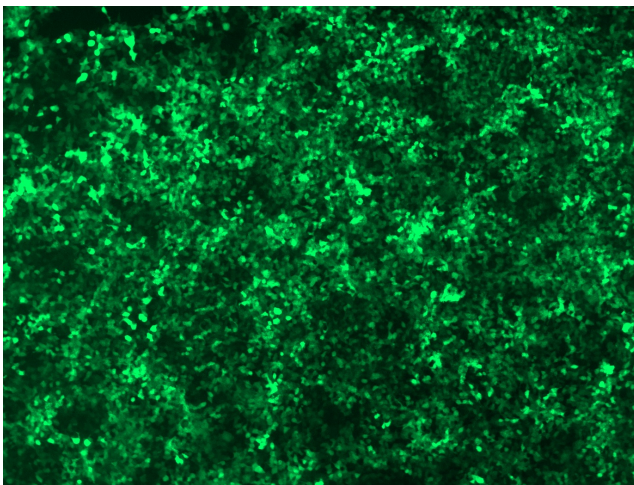
For non-conforming shRNA, requests for replacement product must be made within ninety (90) days from the date of delivery of the shRNA kit. To arrange for a free replacement with newly designed constructs, please contact Technical Services at [techsupport@origene.com](mailto:techsupport@origene.com). Please provide your data indicating the transfection efficiency and measurement of gene expression knockdown compared to the scrambled shRNA control (Western Blot data preferred).

**Product images:**

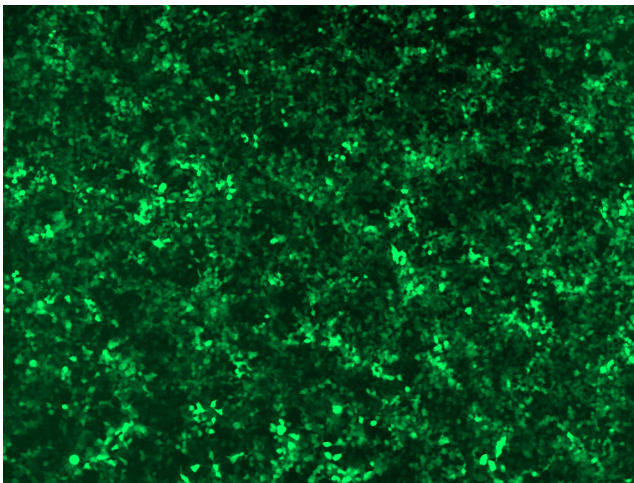
GFP signal was observed under microscope at 48 hours after transduction of TL313125A virus into HEK293 cells. TL313125A virus was prepared using lenti-shRNA TL313125A and [TR30037] packaging kit.



GFP signal was observed under microscope at 48 hours after transduction of TL313125B virus into HEK293 cells. TL313125B virus was prepared using lenti-shRNA TL313125B and [TR30037] packaging kit.



GFP signal was observed under microscope at 48 hours after transduction of [TL313125C] virus into HEK293 cells. [TL313125C] virus was prepared using lenti-shRNA [TL313125C] and [TR30037] packaging kit.



GFP signal was observed under microscope at 48 hours after transduction of [TL313125D] virus into HEK293 cells. [TL313125D] virus was prepared using lenti-shRNA [TL313125D] and [TR30037] packaging kit.