

Product datasheet for **TL309825V**

RHEB Human shRNA Lentiviral Particle (Locus ID 6009)

Product data:

Product Type:	shRNA Lentiviral Particles
Product Name:	RHEB Human shRNA Lentiviral Particle (Locus ID 6009)
Locus ID:	6009
Synonyms:	RHEB2
Vector:	pGFP-C-shLenti (TR30023)
Format:	Lentiviral particles
Components:	RHEB - Human shRNA lentiviral particles (4 unique 29mer target-specific shRNA, 1 scramble control), 0.5 ml each, >10 ⁷ TU/ml.
RefSeq:	NM_005614 , NM_005614.1 , NM_005614.2 , NM_005614.3 , BC016155 , BC066307 , BC107705 , BM670621 , NM_005614.4
UniProt ID:	Q15382
Summary:	This gene is a member of the small GTPase superfamily and encodes a lipid-anchored, cell membrane protein with five repeats of the RAS-related GTP-binding region. This protein is vital in regulation of growth and cell cycle progression due to its role in the insulin/TOR/S6K signaling pathway. The protein has GTPase activity and shuttles between a GDP-bound form and a GTP-bound form, and farnesylation of the protein is required for this activity. Three pseudogenes have been mapped, two on chromosome 10 and one on chromosome 22. [provided by RefSeq, Jul 2008]
shRNA Design:	These shRNA constructs were designed against multiple splice variants at this gene locus. To be certain that your variant of interest is targeted, please contact techsupport@origene.com . If you need a special design or shRNA sequence, please utilize our custom shRNA service .

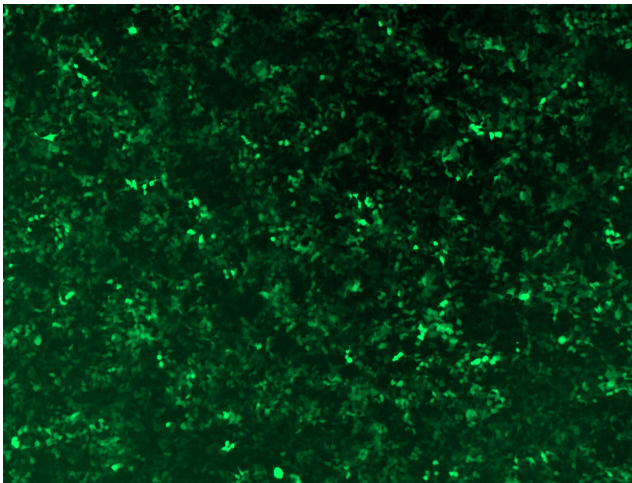


[View online »](#)

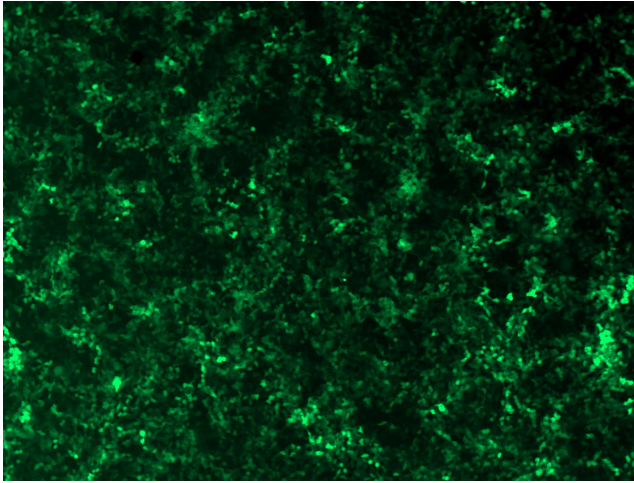
**Performance
Guaranteed:**

OriGene guarantees that the sequences in the shRNA expression cassettes are verified to correspond to the target gene with 100% identity. One of the four constructs at minimum are guaranteed to produce 70% or more gene expression knock-down provided a minimum transfection efficiency of 80% is achieved. Western Blot data is recommended over qPCR to evaluate the silencing effect of the shRNA constructs 72 hrs post transfection. To properly assess knockdown, the gene expression level from the included scramble control vector must be used in comparison with the target-specific shRNA transfected samples.

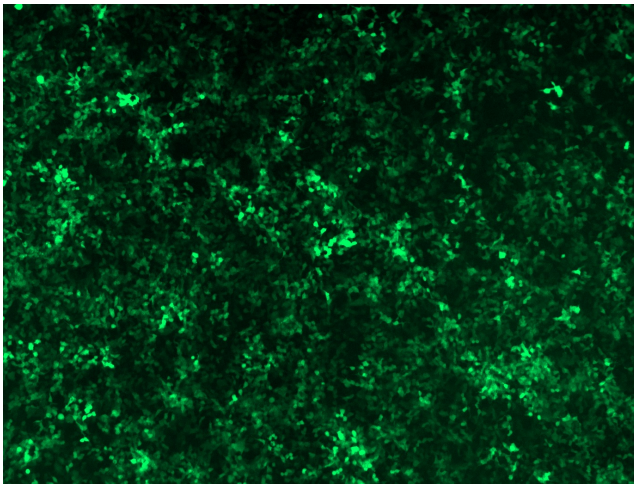
For non-conforming shRNA, requests for replacement product must be made within ninety (90) days from the date of delivery of the shRNA kit. To arrange for a free replacement with newly designed constructs, please contact Technical Services at techsupport@origene.com. Please provide your data indicating the transfection efficiency and measurement of gene expression knockdown compared to the scrambled shRNA control (Western Blot data preferred).

Product images:

GFP signal was observed under microscope at 48 hours after transduction of TL309825A virus into HEK293 cells. TL309825A virus was prepared using lenti-shRNA TL309825A and [TR30037] packaging kit.



GFP signal was observed under microscope at 48 hours after transduction of TL309825B virus into HEK293 cells. TL309825B virus was prepared using lenti-shRNA TL309825B and [TR30037] packaging kit.



GFP signal was observed under microscope at 48 hours after transduction of [TL309825C] virus into HEK293 cells. [TL309825C] virus was prepared using lenti-shRNA [TL309825C] and [TR30037] packaging kit.