

Product datasheet for **TL309104V**

SRRM1 Human shRNA Lentiviral Particle (Locus ID 10250)

Product data:

Product Type:	shRNA Lentiviral Particles
Product Name:	SRRM1 Human shRNA Lentiviral Particle (Locus ID 10250)
Locus ID:	10250
Synonyms:	160-KD; POP101; SRM160
Vector:	pGFP-C-shLenti (TR30023)
Format:	Lentiviral particles
Components:	SRRM1 - Human shRNA lentiviral particles (4 unique 29mer target-specific shRNA, 1 scramble control), 0.5 ml each, >10 ⁷ TU/ml.
RefSeq:	NM_001303448 , NM_001303449 , NM_005839 , NM_005839.1 , NM_005839.2 , NM_005839.3 , NM_001303449.1 , NM_001303448.1 , BC036187 , BC036187.1 , BC011019 , BC017315 , BC107072 , NM_001366577 , NM_001366589 , NM_001366600 , NM_001366566 , NM_001366567 , NM_001366569 , NM_001366570 , NM_001366572 , NM_001366575 , NM_001366576 , NM_001366581 , NM_001366582 , NM_001366585 , NM_001366587 , NM_001366590 , NM_001366592 , NM_001366594 , NM_001366595 , NM_001366596 , NM_001366597 , NM_001366599 , NR_159379 , NR_159382 , NR_159383 , NR_159384 , NR_159385 , NR_159386 , NR_159387 , NR_159388 , NR_159389 , NR_159391 , NM_001366565 , NM_001366568 , NM_001366571 , NM_001366573 , NM_001366578 , NM_001366584 , NM_001366586 , NM_001366588 , NM_001366591 , NM_001366593 , NM_001366598 , NR_159378 , NR_159380 , NR_159390 , NM_001303448.2 , NM_005839.4
UniProt ID:	Q8IYB3
Summary:	Part of pre- and post-splicing multiprotein mRNP complexes. Involved in numerous pre-mRNA processing events. Promotes constitutive and exonic splicing enhancer (ESE)-dependent splicing activation by bridging together sequence-specific (SR family proteins, SFRS4, SFRS5 and TRA2B/SFRS10) and basal snRNP (SNRP70 and SNRPA1) factors of the spliceosome. Stimulates mRNA 3'-end cleavage independently of the formation of an exon junction complex. Binds both pre-mRNA and spliced mRNA 20-25 nt upstream of exon-exon junctions. Binds RNA and DNA with low sequence specificity and has similar preference for either double- or single-stranded nucleic acid substrates.[UniProtKB/Swiss-Prot Function]



[View online »](#)

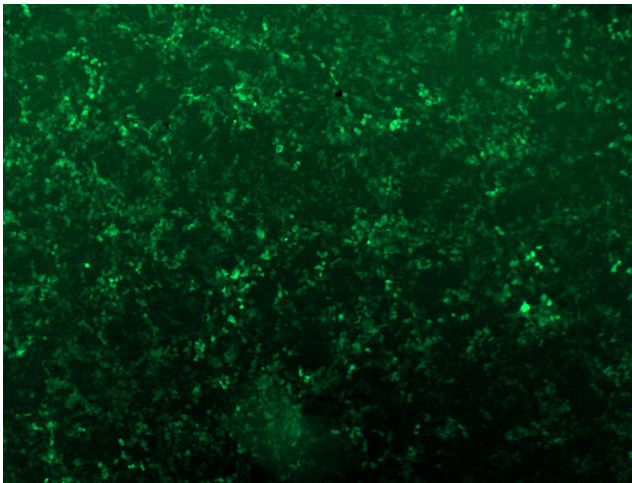
shRNA Design:

These shRNA constructs were designed against multiple splice variants at this gene locus. To be certain that your variant of interest is targeted, please contact techsupport@origene.com. If you need a special design or shRNA sequence, please utilize our [custom shRNA service](#).

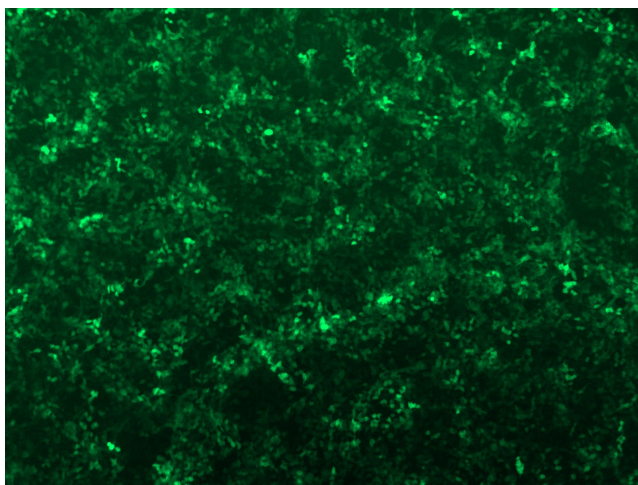
Performance Guaranteed:

OriGene guarantees that the sequences in the shRNA expression cassettes are verified to correspond to the target gene with 100% identity. One of the four constructs at minimum are guaranteed to produce 70% or more gene expression knock-down provided a minimum transfection efficiency of 80% is achieved. Western Blot data is recommended over qPCR to evaluate the silencing effect of the shRNA constructs 72 hrs post transfection. To properly assess knockdown, the gene expression level from the included scramble control vector must be used in comparison with the target-specific shRNA transfected samples.

For non-conforming shRNA, requests for replacement product must be made within ninety (90) days from the date of delivery of the shRNA kit. To arrange for a free replacement with newly designed constructs, please contact Technical Services at techsupport@origene.com. Please provide your data indicating the transfection efficiency and measurement of gene expression knockdown compared to the scrambled shRNA control (Western Blot data preferred).

Product images:

GFP signal was observed under microscope at 48 hours after transduction of [TL309104C] virus into HEK293 cells. [TL309104C] virus was prepared using lenti-shRNA [TL309104C] and [TR30037] packaging kit.



GFP signal was observed under microscope at 48 hours after transduction of [TL309104D] virus into HEK293 cells. [TL309104D] virus was prepared using lenti-shRNA [TL309104D] and [TR30037] packaging kit.