

Product datasheet for **TL305770V**

BAAT1 (BRAT1) Human shRNA Lentiviral Particle (Locus ID 221927)

Product data:

Product Type:	shRNA Lentiviral Particles
Product Name:	BAAT1 (BRAT1) Human shRNA Lentiviral Particle (Locus ID 221927)
Locus ID:	221927
Synonyms:	BAAT1; C7orf27; NEDCAS; RMFSL
Vector:	pGFP-C-shLenti (TR30023)
Format:	Lentiviral particles
Components:	C7orf27 - Human shRNA lentiviral particles (4 unique 29mer target-specific shRNA, 1 scramble control), 0.5 ml each, >10 ⁷ TU/ml.
RefSeq:	NM_152743 , NM_001350626 , NM_001350627 , NR_146879 , NM_152743.1 , NM_152743.2 , NM_152743.3 , BC015632 , BC015632.2 , BC007209 , BC023561 , BC040704
UniProt ID:	Q6PJG6
Summary:	The protein encoded by this ubiquitously expressed gene interacts with the tumor suppressing BRCA1 (breast cancer 1) protein and and the ATM (ataxia telangiectasia mutated) protein. ATM is thought to be a master controller of cell cycle checkpoint signalling pathways that are required for cellular responses to DNA damage such as double-strand breaks that are induced by ionizing radiation and complexes with BRCA1 in the multi-protein complex BASC (BRAC1-associated genome surveillance complex). The protein encoded by this gene is thought to play a role in the DNA damage pathway regulated by BRCA1 and ATM. [provided by RefSeq, Mar 2012]
shRNA Design:	These shRNA constructs were designed against multiple splice variants at this gene locus. To be certain that your variant of interest is targeted, please contact techsupport@origene.com . If you need a special design or shRNA sequence, please utilize our custom shRNA service .

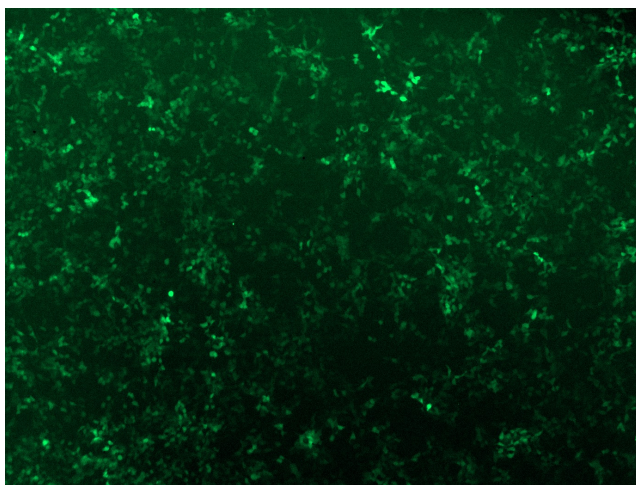


[View online »](#)

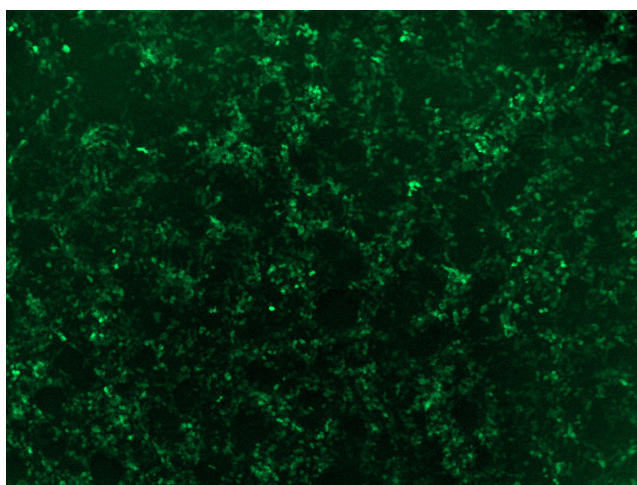
**Performance
Guaranteed:**

OriGene guarantees that the sequences in the shRNA expression cassettes are verified to correspond to the target gene with 100% identity. One of the four constructs at minimum are guaranteed to produce 70% or more gene expression knock-down provided a minimum transfection efficiency of 80% is achieved. Western Blot data is recommended over qPCR to evaluate the silencing effect of the shRNA constructs 72 hrs post transfection. To properly assess knockdown, the gene expression level from the included scramble control vector must be used in comparison with the target-specific shRNA transfected samples.

For non-conforming shRNA, requests for replacement product must be made within ninety (90) days from the date of delivery of the shRNA kit. To arrange for a free replacement with newly designed constructs, please contact Technical Services at techsupport@origene.com. Please provide your data indicating the transfection efficiency and measurement of gene expression knockdown compared to the scrambled shRNA control (Western Blot data preferred).

Product images:

GFP signal was observed under microscope at 48 hours after transduction of [TL305770C] virus into HEK293 cells. [TL305770C] virus was prepared using lenti-shRNA [TL305770C] and [TR30037] packaging kit.



GFP signal was observed under microscope at 48 hours after transduction of [TL305770D] virus into HEK293 cells. [TL305770D] virus was prepared using lenti-shRNA [TL305770D] and [TR30037] packaging kit.