

Product datasheet for **TL304428V**

GABA A Receptor beta 3 (GABRB3) Human shRNA Lentiviral Particle (Locus ID 2562)

Product data:

Product Type:	shRNA Lentiviral Particles
Product Name:	GABA A Receptor beta 3 (GABRB3) Human shRNA Lentiviral Particle (Locus ID 2562)
Locus ID:	2562
Synonyms:	DEE43; ECA5; EIEE43
Vector:	pGFP-C-shLenti (TR30023)
Format:	Lentiviral particles
Components:	GABRB3 - Human shRNA lentiviral particles (4 unique 29mer target-specific shRNA, 1 scramble control), 0.5 ml each, >10 ⁷ TU/ml.
RefSeq:	NM_000814 , NM_001191320 , NM_001191321 , NM_001278631 , NM_021912 , NR_103801 , NM_000814.1 , NM_000814.2 , NM_000814.3 , NM_000814.4 , NM_000814.5 , NM_021912.1 , NM_021912.2 , NM_021912.3 , NM_021912.4 , NM_001191320.1 , NM_001191321.1 , NM_001191321.2 , NM_001278631.1 , BC010641 , BC038837 , NM_001191321.3 , NM_021912.5 , NM_000814.6
UniProt ID:	P28472
Summary:	This gene encodes a member of the ligand-gated ionic channel family. The encoded protein is one the subunits of a multi-subunit chloride channel that serves as the receptor for gamma-aminobutyric acid, a major inhibitory neurotransmitter of the mammalian nervous system. This gene is located on the long arm of chromosome 15 in a cluster with two other genes encoding related subunits of the family. This gene may be associated with the pathogenesis of several disorders including Angelman syndrome, Prader-Willi syndrome, nonsyndromic orofacial clefts, epilepsy and autism. Alternatively spliced transcript variants encoding distinct isoforms have been described. [provided by RefSeq, Jul 2013]
shRNA Design:	These shRNA constructs were designed against multiple splice variants at this gene locus. To be certain that your variant of interest is targeted, please contact techsupport@origene.com . If you need a special design or shRNA sequence, please utilize our custom shRNA service .

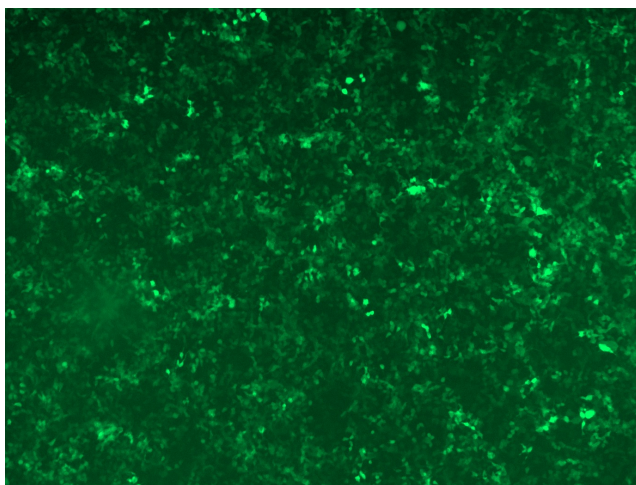


[View online »](#)

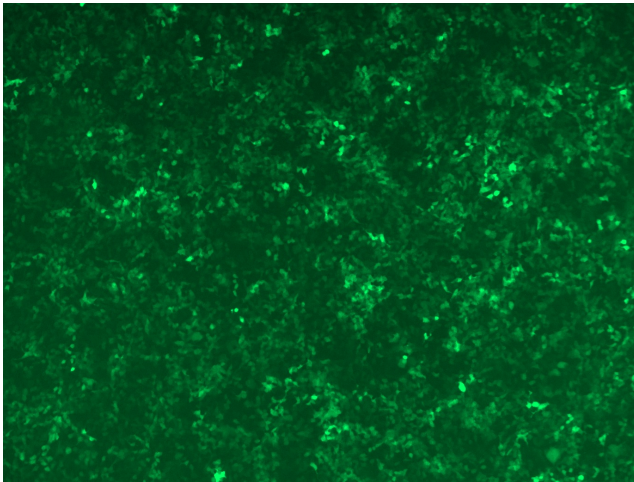
**Performance
Guaranteed:**

OriGene guarantees that the sequences in the shRNA expression cassettes are verified to correspond to the target gene with 100% identity. One of the four constructs at minimum are guaranteed to produce 70% or more gene expression knock-down provided a minimum transfection efficiency of 80% is achieved. Western Blot data is recommended over qPCR to evaluate the silencing effect of the shRNA constructs 72 hrs post transfection. To properly assess knockdown, the gene expression level from the included scramble control vector must be used in comparison with the target-specific shRNA transfected samples.

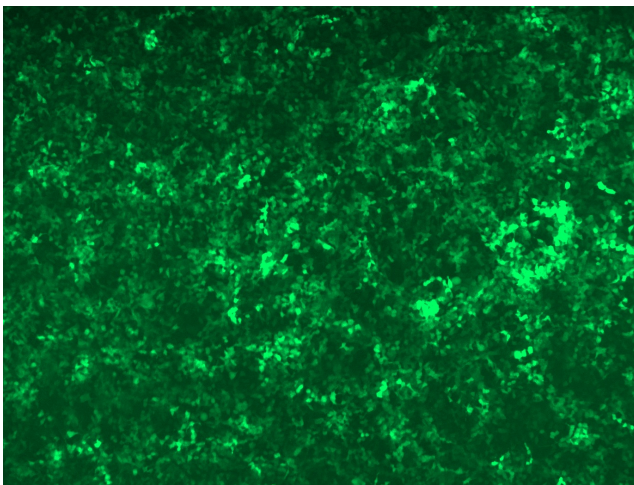
For non-conforming shRNA, requests for replacement product must be made within ninety (90) days from the date of delivery of the shRNA kit. To arrange for a free replacement with newly designed constructs, please contact Technical Services at techsupport@origene.com. Please provide your data indicating the transfection efficiency and measurement of gene expression knockdown compared to the scrambled shRNA control (Western Blot data preferred).

Product images:

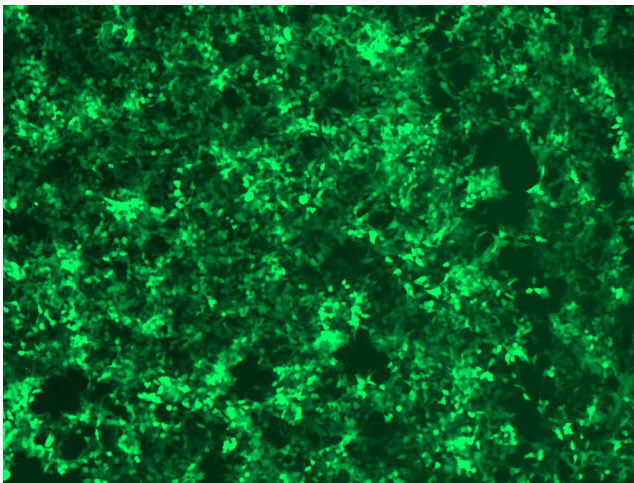
GFP signal was observed under microscope at 48 hours after transduction of TL304428A virus into HEK293 cells. TL304428A virus was prepared using lenti-shRNA TL304428A and [TR30037] packaging kit.



GFP signal was observed under microscope at 48 hours after transduction of TL304428B virus into HEK293 cells. TL304428B virus was prepared using lenti-shRNA TL304428B and [TR30037] packaging kit.



GFP signal was observed under microscope at 48 hours after transduction of [TL304428C] virus into HEK293 cells. [TL304428C] virus was prepared using lenti-shRNA [TL304428C] and [TR30037] packaging kit.



GFP signal was observed under microscope at 48 hours after transduction of [TL304428D] virus into HEK293 cells. [TL304428D] virus was prepared using lenti-shRNA [TL304428D] and [TR30037] packaging kit.