

Product datasheet for **TL303902**

Importin4 (IPO4) Human shRNA Plasmid Kit (Locus ID 79711)

Product data:

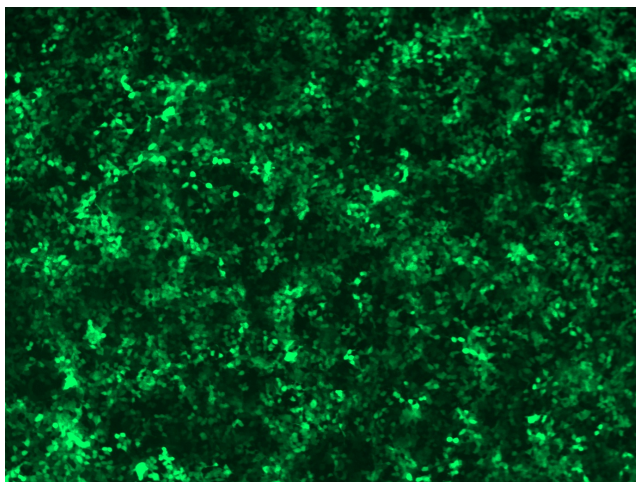
Product Type:	shRNA Plasmids
Product Name:	Importin4 (IPO4) Human shRNA Plasmid Kit (Locus ID 79711)
Locus ID:	79711
Synonyms:	Imp4
Vector:	pGFP-C-shLenti (TR30023)
E. coli Selection:	Chloramphenicol (34 ug/ml)
Mammalian Cell Selection:	Puromycin
Format:	Lentiviral plasmids
Components:	IPO4 - Human, 4 unique 29mer shRNA constructs in lentiviral GFP vector(Gene ID = 79711). 5µg purified plasmid DNA per construct 29-mer scrambled shRNA cassette in pGFP-C-shLenti Vector, TR30021, included for free.
RefSeq:	NM_024658 , NR_051979 , NM_024658.1 , NM_024658.2 , NM_024658.3 , BC110804 , BC110804.1 , BC003690 , BC136759 , BC144399 , BC144400 , NM_024658.4
UniProt ID:	Q8TEX9
Summary:	Functions in nuclear protein import as nuclear transport receptor. Serves as receptor for nuclear localization signals (NLS) in cargo substrates. Is thought to mediate docking of the importin/substrate complex to the nuclear pore complex (NPC) through binding to nucleoporin and the complex is subsequently translocated through the pore by an energy requiring, Ran-dependent mechanism. At the nucleoplasmic side of the NPC, Ran binds to the importin, the importin/substrate complex dissociates and importin is re-exported from the nucleus to the cytoplasm where GTP hydrolysis releases Ran. The directionality of nuclear import is thought to be conferred by an asymmetric distribution of the GTP- and GDP-bound forms of Ran between the cytoplasm and nucleus (By similarity). Mediates the nuclear import of RPS3A. In vitro, mediates the nuclear import of human cytomegalovirus UL84 by recognizing a non-classical NLS.[UniProtKB/Swiss-Prot Function]
shRNA Design:	These shRNA constructs were designed against multiple splice variants at this gene locus. To be certain that your variant of interest is targeted, please contact techsupport@origene.com . If you need a special design or shRNA sequence, please utilize our custom shRNA service .


[View online »](#)

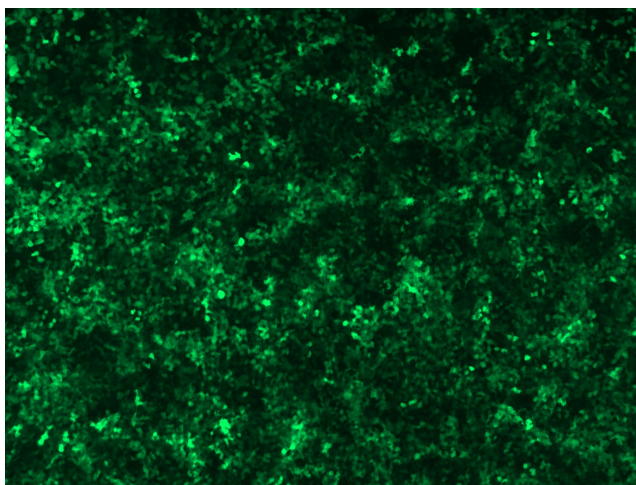
**Performance
Guaranteed:**

OriGene guarantees that the sequences in the shRNA expression cassettes are verified to correspond to the target gene with 100% identity. One of the four constructs at minimum are guaranteed to produce 70% or more gene expression knock-down provided a minimum transfection efficiency of 80% is achieved. Western Blot data is recommended over qPCR to evaluate the silencing effect of the shRNA constructs 72 hrs post transfection. To properly assess knockdown, the gene expression level from the included scramble control vector must be used in comparison with the target-specific shRNA transfected samples.

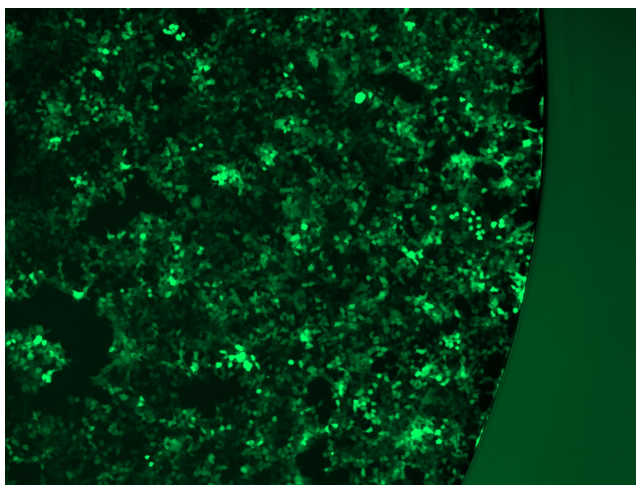
For non-conforming shRNA, requests for replacement product must be made within ninety (90) days from the date of delivery of the shRNA kit. To arrange for a free replacement with newly designed constructs, please contact Technical Services at techsupport@origene.com. Please provide your data indicating the transfection efficiency and measurement of gene expression knockdown compared to the scrambled shRNA control (Western Blot data preferred).

Product images:


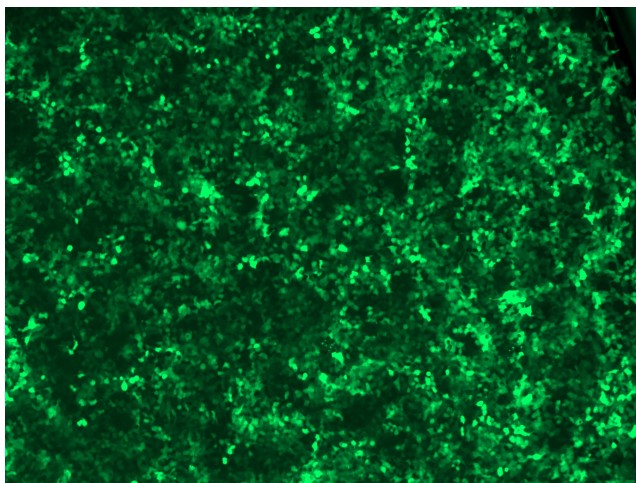
GFP signal was observed under microscope at 48 hours after transduction of TL303902A virus into HEK293 cells. TL303902A virus was prepared using lenti-shRNA TL303902A and [TR30037] packaging kit.



GFP signal was observed under microscope at 48 hours after transduction of TL303902B virus into HEK293 cells. TL303902B virus was prepared using lenti-shRNA TL303902B and [TR30037] packaging kit.



GFP signal was observed under microscope at 48 hours after transduction of [TL303902C] virus into HEK293 cells. [TL303902C] virus was prepared using lenti-shRNA [TL303902C] and [TR30037] packaging kit.



GFP signal was observed under microscope at 48 hours after transduction of [TL303902D] virus into HEK293 cells. [TL303902D] virus was prepared using lenti-shRNA [TL303902D] and [TR30037] packaging kit.