

Product datasheet for **TL301535V**

LAT2 (SLC7A8) Human shRNA Lentiviral Particle (Locus ID 23428)

Product data:

Product Type:	shRNA Lentiviral Particles
Product Name:	LAT2 (SLC7A8) Human shRNA Lentiviral Particle (Locus ID 23428)
Locus ID:	23428
Synonyms:	LAT2; LPI-PC1
Vector:	pGFP-C-shLenti (TR30023)
Format:	Lentiviral particles
Components:	SLC7A8 - Human shRNA lentiviral particles (4 unique 29mer target-specific shRNA, 1 scramble control), 0.5 ml each, >10 ⁷ TU/ml.
RefSeq:	NM_001267036 , NM_001267037 , NM_012244 , NM_182728 , NR_049767 , NM_012244.1 , NM_012244.2 , NM_012244.3 , NM_182728.1 , NM_182728.2 , NM_001267037.1 , NM_001267036.1 , BC052250 , BC036825 , NM_012244.4
UniProt ID:	Q9UHI5
Summary:	Sodium-independent, high-affinity transport of small and large neutral amino acids such as alanine, serine, threonine, cysteine, phenylalanine, tyrosine, leucine, arginine and tryptophan, when associated with SLC3A2/4F2hc. Acts as an amino acid exchanger. Has higher affinity for L-phenylalanine than LAT1 but lower affinity for glutamine and serine. L-alanine is transported at physiological concentrations. Plays a role in basolateral (re)absorption of neutral amino acids. Involved in the uptake of methylmercury (MeHg) when administered as the L-cysteine or D,L-homocysteine complexes, and hence plays a role in metal ion homeostasis and toxicity. Involved in the cellular activity of small molecular weight nitrosothiols, via the stereoselective transport of L-nitrosocysteine (L-CNSO) across the transmembrane. Plays an essential role in the reabsorption of neutral amino acids from the epithelial cells to the bloodstream in the kidney.[UniProtKB/Swiss-Prot Function]
shRNA Design:	These shRNA constructs were designed against multiple splice variants at this gene locus. To be certain that your variant of interest is targeted, please contact techsupport@origene.com . If you need a special design or shRNA sequence, please utilize our custom shRNA service .

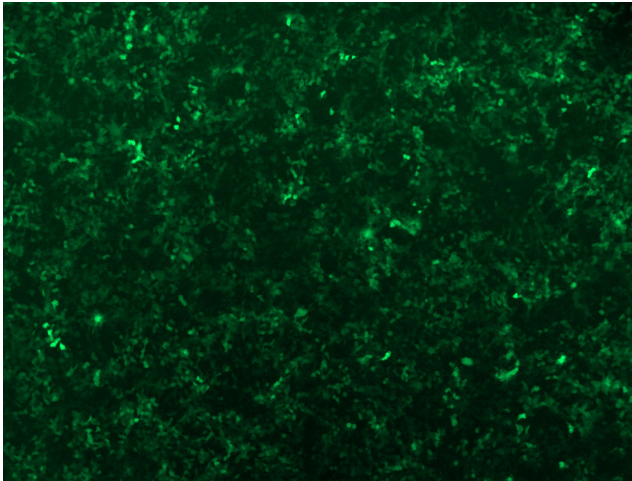


[View online »](#)

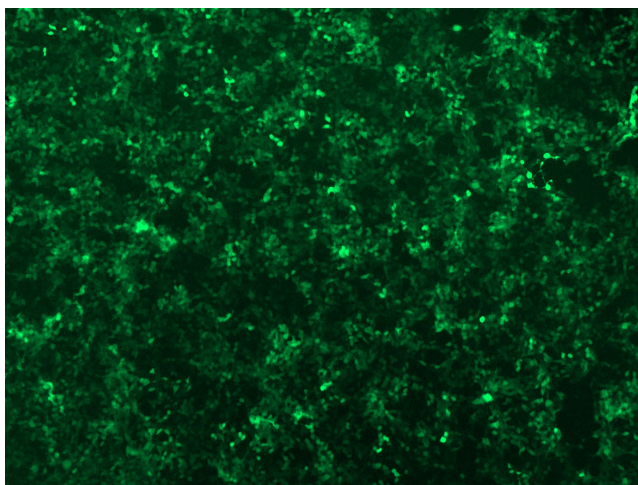
**Performance
Guaranteed:**

OriGene guarantees that the sequences in the shRNA expression cassettes are verified to correspond to the target gene with 100% identity. One of the four constructs at minimum are guaranteed to produce 70% or more gene expression knock-down provided a minimum transfection efficiency of 80% is achieved. Western Blot data is recommended over qPCR to evaluate the silencing effect of the shRNA constructs 72 hrs post transfection. To properly assess knockdown, the gene expression level from the included scramble control vector must be used in comparison with the target-specific shRNA transfected samples.

For non-conforming shRNA, requests for replacement product must be made within ninety (90) days from the date of delivery of the shRNA kit. To arrange for a free replacement with newly designed constructs, please contact Technical Services at techsupport@origene.com. Please provide your data indicating the transfection efficiency and measurement of gene expression knockdown compared to the scrambled shRNA control (Western Blot data preferred).

Product images:

GFP signal was observed under microscope at 48 hours after transduction of TL301535B virus into HEK293 cells. TL301535B virus was prepared using lenti-shRNA TL301535B and [TR30037] packaging kit.



GFP signal was observed under microscope at 48 hours after transduction of [TL301535C] virus into HEK293 cells. [TL301535C] virus was prepared using lenti-shRNA [TL301535C] and [TR30037] packaging kit.