

Product datasheet for **TL300400**

YTHDF2 Human shRNA Plasmid Kit (Locus ID 51441)

Product data:

Product Type:	shRNA Plasmids
Product Name:	YTHDF2 Human shRNA Plasmid Kit (Locus ID 51441)
Locus ID:	51441
Synonyms:	CAHL; DF2; HGRG8; NY-REN-2
Vector:	pGFP-C-shLenti (TR30023)
E. coli Selection:	Chloramphenicol (34 ug/ml)
Mammalian Cell Selection:	Puromycin
Format:	Lentiviral plasmids
Components:	YTHDF2 - Human, 4 unique 29mer shRNA constructs in lentiviral GFP vector(Gene ID = 51441). 5µg purified plasmid DNA per construct 29-mer scrambled shRNA cassette in pGFP-C-shLenti Vector, TR30021, included for free.
RefSeq:	NM_001172828 , NM_001173128 , NM_016258 , NM_016258.1 , NM_016258.2 , NM_001172828.1 , NM_001173128.1 , BC002559 , BC002559.2 , NM_016258.3
UniProt ID:	Q9Y5A9
Summary:	This gene encodes a member of the YTH (YT521-B homology) superfamily containing YTH domain. The YTH domain is typical for the eukaryotes and is particularly abundant in plants. The YTH domain is usually located in the middle of the protein sequence and may function in binding to RNA. In addition to a YTH domain, this protein has a proline rich region which may be involved in signal transduction. An Alu-rich domain has been identified in one of the introns of this gene, which is thought to be associated with human longevity. In addition, reciprocal translocations between this gene and the Runx1 (AML1) gene on chromosome 21 has been observed in patients with acute myeloid leukemia. This gene was initially mapped to chromosome 14, which was later turned out to be a pseudogene. Alternatively spliced transcript variants encoding different isoforms have been identified in this gene. [provided by RefSeq, Oct 2012]
shRNA Design:	These shRNA constructs were designed against multiple splice variants at this gene locus. To be certain that your variant of interest is targeted, please contact techsupport@origene.com . If you need a special design or shRNA sequence, please utilize our custom shRNA service .

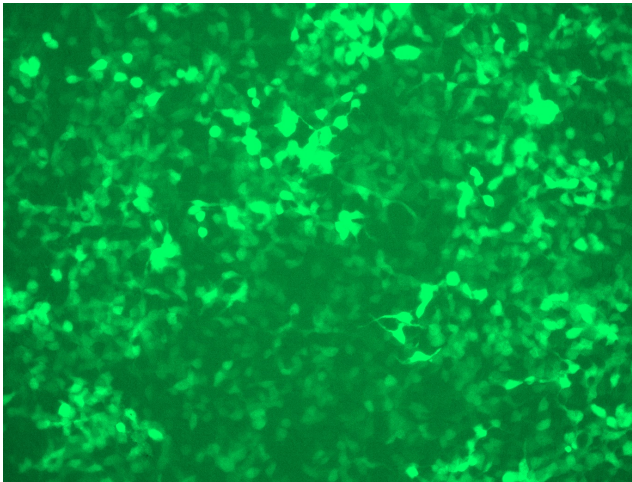


[View online »](#)

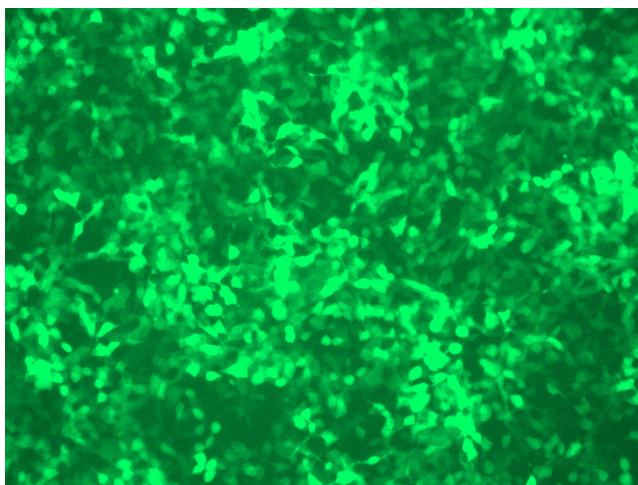
**Performance
Guaranteed:**

OriGene guarantees that the sequences in the shRNA expression cassettes are verified to correspond to the target gene with 100% identity. One of the four constructs at minimum are guaranteed to produce 70% or more gene expression knock-down provided a minimum transfection efficiency of 80% is achieved. Western Blot data is recommended over qPCR to evaluate the silencing effect of the shRNA constructs 72 hrs post transfection. To properly assess knockdown, the gene expression level from the included scramble control vector must be used in comparison with the target-specific shRNA transfected samples.

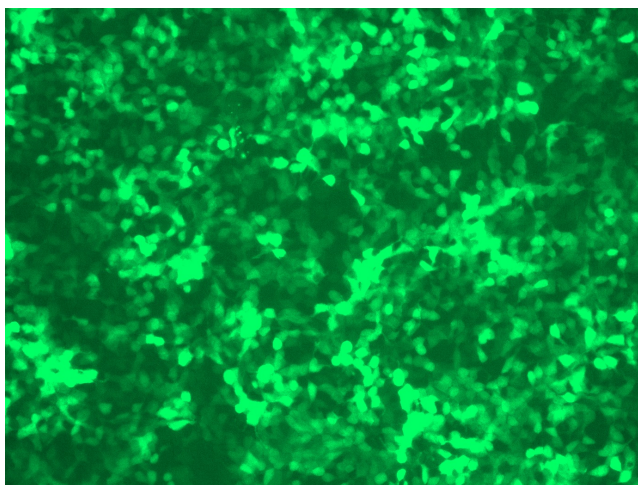
For non-conforming shRNA, requests for replacement product must be made within ninety (90) days from the date of delivery of the shRNA kit. To arrange for a free replacement with newly designed constructs, please contact Technical Services at techsupport@origene.com. Please provide your data indicating the transfection efficiency and measurement of gene expression knockdown compared to the scrambled shRNA control (Western Blot data preferred).

Product images:

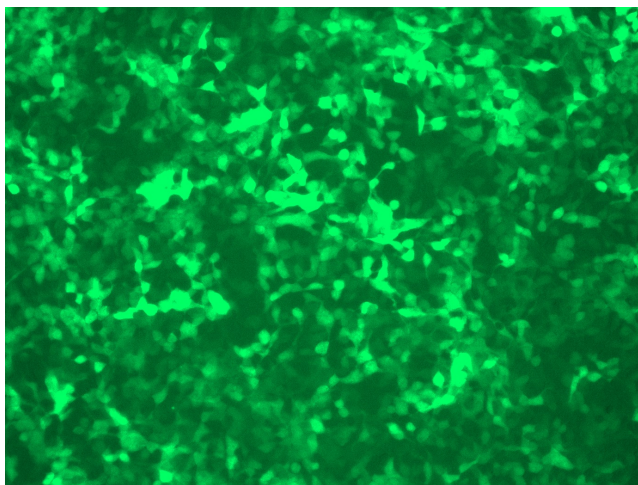
GFP signal was observed under microscope at 48 hours after transduction of TL300400A virus into HEK293 cells. TL300400A virus was prepared using lenti-shRNA TL300400A and [TR30037] packaging kit.



GFP signal was observed under microscope at 48 hours after transduction of TL300400B virus into HEK293 cells. TL300400B virus was prepared using lenti-shRNA TL300400B and [TR30037] packaging kit.



GFP signal was observed under microscope at 48 hours after transduction of [TL300400C] virus into HEK293 cells. [TL300400C] virus was prepared using lenti-shRNA [TL300400C] and [TR30037] packaging kit.



GFP signal was observed under microscope at 48 hours after transduction of [TL300400D] virus into HEK293 cells. [TL300400D] virus was prepared using lenti-shRNA [TL300400D] and [TR30037] packaging kit.