

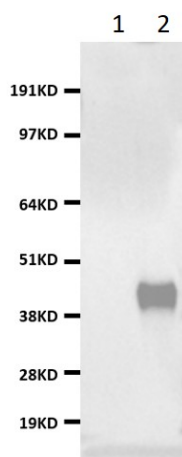
Product datasheet for TA899008S

OVAL Rabbit Polyclonal Antibody

Product data:

Product Type:	Primary Antibodies
Applications:	WB
Recommended Dilution:	WB1:500
Reactivity:	Human
Host:	Rabbit
Isotype:	IgG
Clonality:	Polyclonal
Immunogen:	Full length protein
Formulation:	PBS (PH 7.3) containing 1% BSA, 50% glycerol and 0.02% sodium azide.
Purification:	Purified from the immunized serum by affinity chromatography
Conjugation:	Unconjugated
Storage:	Store at -20°C as received.
Stability:	Stable for 12 months from date of receipt
Predicted Protein Size:	112 kDa
Gene Name:	ovalbumin (SERPINB14)
Database Link:	P01012
Background:	Chicken Ovalbumin is the major protein in the "white" of the egg (and a favorite antigen in immunological research). Egg white contains a variety of proteins including ovalbumin, conalbumin, ovomucoid and lysozyme. It belongs to the serpin family and the Ov serpin subfamily. Ovalbumin can cause an allergic reaction in humans. Ovalbumin has been implicated in the development of the egg shell. Immunohistochemistry revealed that ovalbumin is found only in the mamillary bodies of decalcified shell, and is not distributed throughout the shell matrix. These results indicate that ovalbumin is present during the initial phase of shell formation and becomes incorporated into the protein matrix of the mamillary bodies. However, it is not yet clear whether ovalbumin at this site plays a specific role in shell mineralisation.


[View online »](#)

Product images:

HEK293T cells were transfected with the pCMV6-ENTRY control (lane 1, 5ug) or SerpinB14 protein (lane 2, 2ug). Samples were separated by SDS-PAGE and immunoblotted with anti-SerpinB14 ([TA899008], 1:500).