

Product datasheet for **TA899005S**

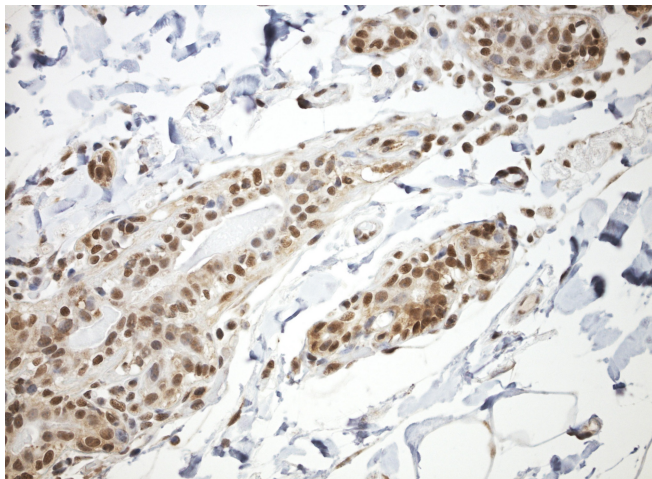
SP1 Rabbit Polyclonal Antibody

Product data:

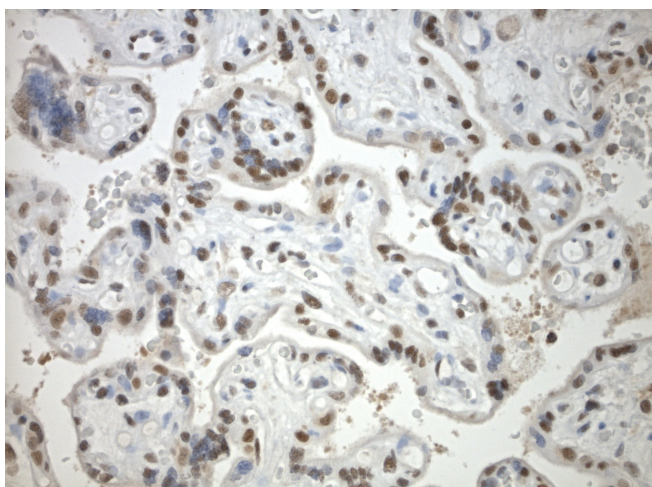
Product Type:	Primary Antibodies
Applications:	WB
Recommended Dilution:	WB1:500, IHC 1:100 to 1:200
Reactivity:	Human
Host:	Rabbit
Isotype:	IgG
Clonality:	Polyclonal
Immunogen:	Full length protein
Formulation:	PBS (PH 7.3) containing 1% BSA, 50% glycerol and 0.02% sodium azide.
Purification:	Purified from the immunized serum by affinity chromatography
Conjugation:	Unconjugated
Storage:	Store at -20°C as received.
Stability:	Stable for 12 months from date of receipt.
Predicted Protein Size:	86 kDa
Gene Name:	Sp1 transcription factor
Database Link:	Entrez Gene 6667 Human P08047
Background:	The protein encoded by this gene is a zinc finger transcription factor that binds to GC-rich motifs of many promoters. The encoded protein is involved in many cellular processes; including cell differentiation; cell growth; apoptosis; immune responses; response to DNA damage; and chromatin remodeling. Post-translational modifications such as phosphorylation; acetylation; glycosylation; and proteolytic processing significantly affect the activity of this protein; which can be an activator or a repressor. Three transcript variants encoding different isoforms have been found for this gene.



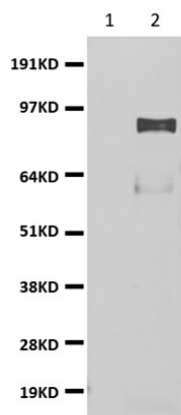
[View online »](#)

Product images:

Immunohistochemical staining of paraffin-embedded normal breast using anti-SP1 C/N [TA899005] rabbit polyclonal antibody. HIER Citrate buffer pH6 ([B05-100B]) at 110C for 10 min, anti-SP1 diluted to 1:200. Detection was done with Polink1 Rabbit C/N [D13-18] with DAB Kit. Image 40x magnification.



Immunohistochemical staining of paraffin-embedded normal placenta using anti-SP1 C/N [TA899005] rabbit polyclonal antibody. HIER Citrate buffer pH6 ([B05-100B]) at 110C for 10 min, anti-SP1 diluted to 1:200. Detection was done with Polink1 Rabbit C/N [D13-18] with DAB Kit. Image 40x magnification.



HEK293T cells were transfected with the pCMV6-ENTRY control (lane 1) or pCMV6-ENTRY SP1 ([RC209154], lane 2) cDNA for 48 hrs and lysed. Equivalent amounts of cell lysates (5 ug per lane) were separated by SDS-PAGE and immunoblotted with anti-SP1 ([TA899005], 1:1000).