

## Product datasheet for **TA899002**

### PMS2 Rabbit Polyclonal Antibody

#### Product data:

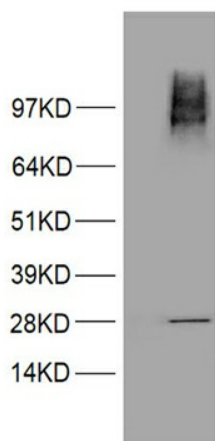
Product Type:	Primary Antibodies
Applications:	ELISA, WB
Recommended Dilution:	ELISA 1:5000-10000, WB 1:500
Reactivity:	Human
Host:	Rabbit
Isotype:	IgG
Clonality:	Polyclonal
Immunogen:	This antibody is raised against a recombinant protein of PMS2 expressed in HEK293 cells
Formulation:	Tissue culture buffer containing 1% BSA and 0.02% Sodium azide
Concentration:	Lot dependent; please refer to CoA along with shipment
Purification:	Purified from the immunized serum by affinity chromatography (Protein A/G)
Conjugation:	Unconjugated
Storage:	Store at -20°C as received.
Stability:	Stable for 12 months from date of receipt.
Predicted Protein Size:	95.8 kDa
Gene Name:	PMS1 homolog 2, mismatch repair system component
Database Link:	<a href="#">NP_000526</a> <a href="#">Entrez Gene 5395 Human P54278</a>
Background:	This gene is one of the PMS2 gene family members found in clusters on chromosome 7. The product of this gene is involved in DNA mismatch repair. It forms a heterodimer with MLH1 and this complex interacts with other complexes bound to mismatched bases. Mutations in this gene are associated with hereditary nonpolyposis colorectal cancer, Turcot syndrome, and are a cause of supratentorial primitive neuroectodermal tumors. Alternatively spliced transcript variants have been observed for this gene. [provided by RefSeq, Jul 2008]
Synonyms:	HNPCC4; MLH4; MMRCS4; PMS2CL; PMSL2
Protein Families:	Druggable Genome



[View online »](#)

Protein Pathways: Mismatch repair

### Product images:



HEK293T cells were transfected with the pCMV6-ENTRY control (Left lane) or pCMV6-ENTRY PMS2 cDNA (Cat# [RC210880], Right lane) for 48 hrs and lysed. Equivalent amounts of cell lysates (5 ug per lane) were separated by SDS-PAGE and immunoblotted with anti-PMS2(Cat# TA899002). (1:500)