

## Product datasheet for **TA899001S**

### Syndecan 1 (SDC1) Rabbit Polyclonal Antibody

#### Product data:

Product Type:	Primary Antibodies
Applications:	ELISA, WB
Recommended Dilution:	ELISA 1:5000-10000, WB 1:500
Reactivity:	Human
Host:	Rabbit
Isotype:	IgG
Clonality:	Polyclonal
Immunogen:	This antibody is raised against a recombinant protein of SDC1 expressed in HEK293 cells
Formulation:	Tissue culture buffer containing 1% BSA and 0.02% Sodium azide
Concentration:	Lot dependent; please refer to CoA along with shipment
Purification:	Purified from the immunized serum by affinity chromatography (Protein A/G)
Conjugation:	Unconjugated
Storage:	Store at -20°C as received.
Stability:	Stable for 12 months from date of receipt.
Predicted Protein Size:	32.5 kDa
Gene Name:	syndecan 1
Database Link:	<a href="#">NP_001006947</a> <a href="#">Entrez Gene 6382 Human</a> <a href="#">P18827</a>



[View online »](#)

**Background:**

The protein encoded by this gene is a transmembrane (type I) heparan sulfate proteoglycan and is a member of the syndecan proteoglycan family. The syndecans mediate cell binding, cell signaling, and cytoskeletal organization and syndecan receptors are required for internalization of the HIV-1 tat protein. The syndecan-1 protein functions as an integral membrane protein and participates in cell proliferation, cell migration and cell-matrix interactions via its receptor for extracellular matrix proteins. Altered syndecan-1 expression has been detected in several different tumor types. While several transcript variants may exist for this gene, the full-length natures of only two have been described to date. These two represent the major variants of this gene and encode the same protein. [provided by RefSeq, Jul 2008]

**Synonyms:**

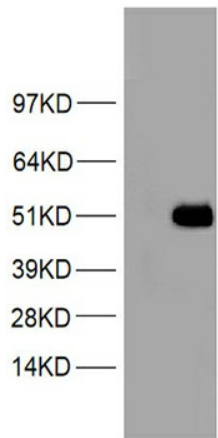
CD138; SDC; SYND1; syndecan

**Protein Families:**

Druggable Genome, ES Cell Differentiation/IPS, Transmembrane

**Protein Pathways:**

Cell adhesion molecules (CAMs), ECM-receptor interaction

**Product images:**

HEK293T cells were transfected with the pCMV6-ENTRY control (Left lane) or pCMV6-ENTRY SDC1 cDNA (Cat# [RC217847], Right lane) for 48 hrs and lysed. Equivalent amounts of cell lysates (5 ug per lane) were separated by SDS-PAGE and immunoblotted with anti-SDC1 (Cat# [TA899001]). (1:500)