

## Product datasheet for **TA890259S**

### ADFP (PLIN2) Rabbit Polyclonal Antibody

#### Product data:

Product Type:	Primary Antibodies
Applications:	WB
Recommended Dilution:	WB 1:2000
Reactivity:	Human, Mouse
Host:	Rabbit
Isotype:	IgG
Clonality:	Polyclonal
Immunogen:	Human recombinant protein fragment of human PLIN2 ( NP_001113) produced in E.coli.
Formulation:	PBS (pH 7.3) containing 1% BSA, 50% glycerol and 0.02% sodium azide.
Concentration:	1 mg/ml
Purification:	Purified from mouse ascites fluids or tissue culture supernatant by affinity chromatography (protein A/G)
Conjugation:	Unconjugated
Storage:	Store at -20°C as received.
Stability:	Stable for 12 months from date of receipt.
Predicted Protein Size:	47.9 kDa
Gene Name:	perilipin 2
Database Link:	<a href="#">NP_001113</a> <a href="#">Entrez Gene 11520 Mouse</a> <a href="#">Entrez Gene 101055843 Mouse</a> <a href="#">Entrez Gene 123 Human</a> <a href="#">Q99541</a>



[View online »](#)

**Background:**

The protein encoded by this gene belongs to the perilipin family, members of which coat intracellular lipid storage droplets. This protein is associated with the lipid globule surface membrane material, and maybe involved in development and maintenance of adipose tissue. However, it is not restricted to adipocytes as previously thought, but is found in a wide range of cultured cell lines, including fibroblasts, endothelial and epithelial cells, and tissues, such as lactating mammary gland, adrenal cortex, Sertoli and Leydig cells, and hepatocytes in alcoholic liver cirrhosis, suggesting that it may serve as a marker of lipid accumulation in diverse cell types and diseases. Alternatively spliced transcript variants have been found for this gene. [provided by RefSeq, Mar 2011]

**Synonyms:**

ADFP; ADRP

**Protein Families:**

Druggable Genome

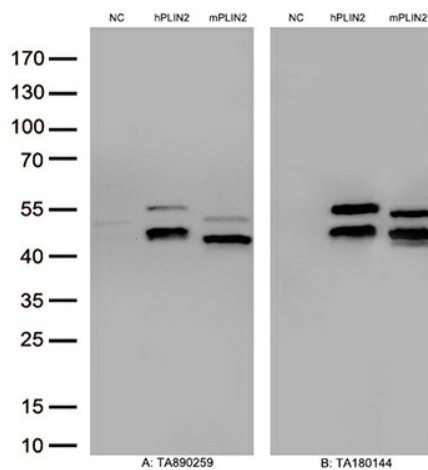
**Product images:**


Figure A, Western blot analysis of overexpressed lysates(15ug per lane) from HEK293T cells transfected with empty plasmid ([PS100001], NC), human PLIN2 plasmid ([RC202500], hPLIN2), mouse PLIN2 plasmid ([MR206783], mPLIN2) using anti-PLIN2 antibody [TA890259](1:2000). Figure B, Western blot analysis of the same samples as figure A with anti-DDK antibody ([TA180144], 1:1000)

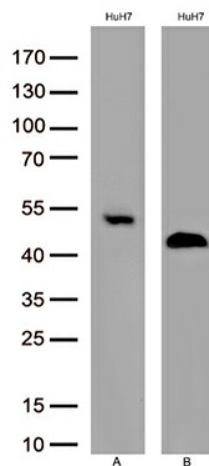


Figure A, Western blot analysis of extracts(50ug) from HuH7 cell lines lysates by using anti-PLIN2 antibody. ([TA890259], 1:2000). Figure B, Western blot analysis of the same samples as figure A with anti-beta Actin antibody ([TA811000], 1:500)