

Product datasheet for **TA890253M**

Folate Binding Protein (FOLR1) Rabbit Polyclonal Antibody

Product data:

Product Type:	Primary Antibodies
Applications:	WB
Recommended Dilution:	WB 1:2000
Reactivity:	Human
Host:	Rabbit
Isotype:	IgG
Clonality:	Polyclonal
Immunogen:	Human recombinant protein fragment of human FOLR1 (NP_057937) produced in HEK293T.
Formulation:	PBS (pH 7.3) containing 1% BSA, 50% glycerol and 0.02% sodium azide.
Concentration:	1 mg/ml
Purification:	Purified from mouse ascites fluids or tissue culture supernatant by affinity chromatography (protein A/G)
Conjugation:	Unconjugated
Storage:	Store at -20°C as received.
Stability:	Stable for 12 months from date of receipt.
Predicted Protein Size:	29.82 kDa
Gene Name:	folate receptor 1 (adult)
Database Link:	NP_057937 Entrez Gene 2348 Human P15328

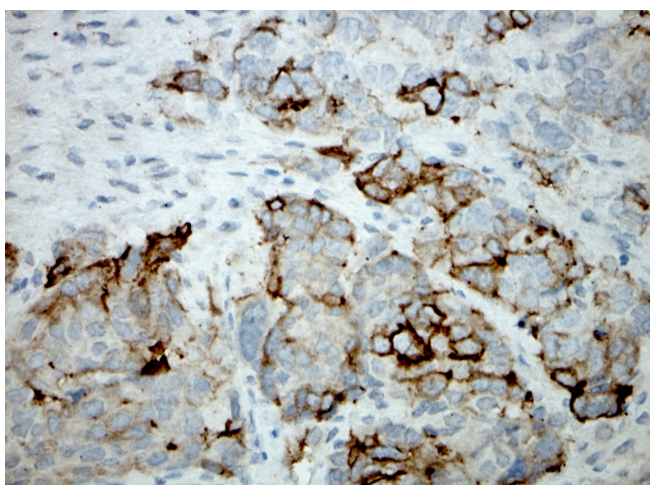
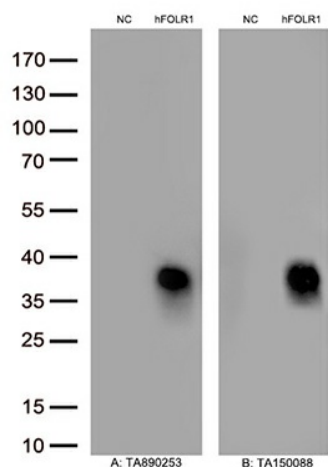
Background: The protein encoded by this gene is a member of the folate receptor family. Members of this gene family bind folic acid and its reduced derivatives, and transport 5-methyltetrahydrofolate into cells. This gene product is a secreted protein that either anchors to membranes via a glycosyl-phosphatidylinositol linkage or exists in a soluble form. Mutations in this gene have been associated with neurodegeneration due to cerebral folate transport deficiency. Due to the presence of two promoters, multiple transcription start sites, and alternative splicing, multiple transcript variants encoding the same protein have been found for this gene. [provided by RefSeq, Oct 2009]

[View online »](#)

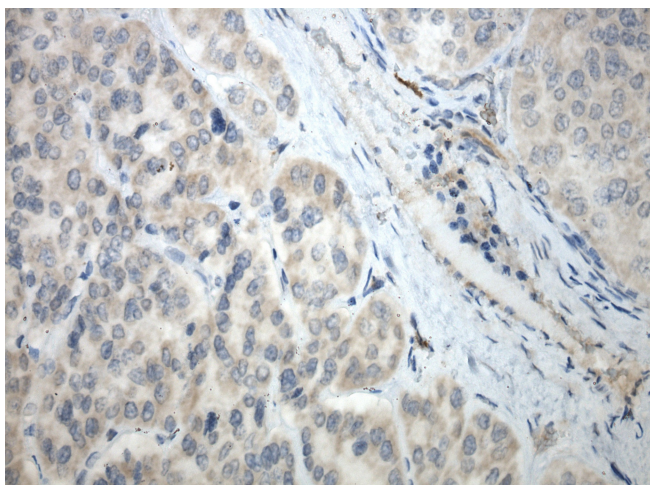
Synonyms: FBP; FOLR; FRalpha; NCFTD

Protein Families: Druggable Genome, Secreted Protein, Transmembrane

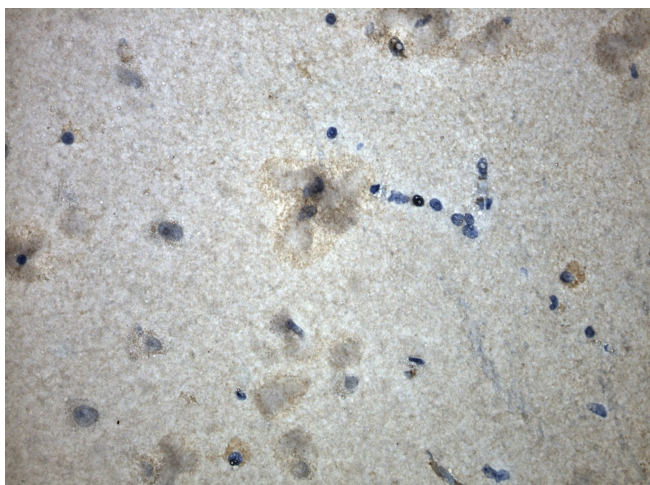
Product images:



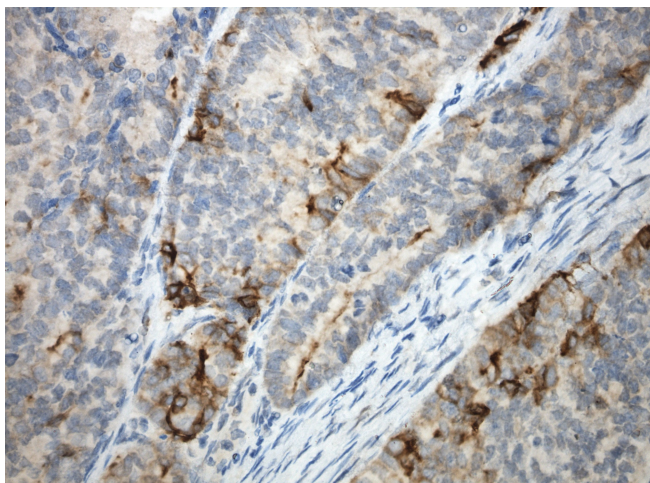
Immunohistochemical staining of paraffin-embedded ovarian carcinoma using FOLR1 antibody [TA890253] rabbit polyclonal antibody. Protocol used HIER TEE pH9.0 (cat# [B21-100]) and anti-FOLR1 at 1:50 dilution. Detection was done with Polink1 Broad Mouse and Rabbit C/N [D11-18] with DAB Kit. Image 40x magnification.



Immunohistochemical staining of paraffin-embedded renal cell carcinoma using FOLR1 antibody [TA890253] rabbit polyclonal antibody. Protocol used HIER TEE pH9.0 (cat# [B21-100]) and anti-FOLR1 at 1:50 dilution. Detection was done with Polink1 Broad Mouse and Rabbit C/N [D11-18] with DAB Kit. Image 40x magnification.



Immunohistochemical staining of paraffin-embedded brain using FOLR1 antibody [TA890253] rabbit polyclonal antibody. Protocol used HIER TEE pH9.0 (cat# [B21-100]) and anti-FOLR1 at 1:50 dilution. Detection was done with Polink1 Broad Mouse and Rabbit C/N [D11-18] with DAB Kit. Image 40x magnification.



Immunohistochemical staining of paraffin-embedded endometrial carcinoma using FOLR1 antibody [TA890253] rabbit polyclonal antibody. Protocol used HIER TEE pH9.0 (cat# [B21-100]) and anti-FOLR1 at 1:50 dilution. Detection was done with Polink1 Broad Mouse and Rabbit C/N [D11-18] with DAB Kit. Image 40x magnification.