

Product datasheet for **TA890231S**

S Protein Rabbit Antibody

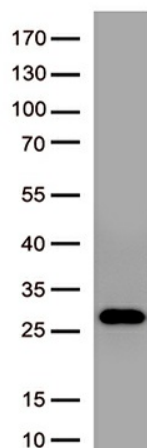
Product data:

| | |
|-----------------------|---|
| Product Type: | Primary Antibodies |
| Applications: | ELISA, WB |
| Recommended Dilution: | WB 1:2000-5000, ELISA 1:5000-1:10000 |
| Reactivity: | SARS-CoV-2 |
| Host: | Rabbit |
| Isotype: | IgG |
| Immunogen: | Recombinant SARS-CoV-2 Spike-RBD protein produced in E.coli. |
| Formulation: | PBS (pH7.3) containing 1% BSA, 50% glycerol and 0.02% sodium azide |
| Concentration: | 1 mg/ml |
| Purification: | Purified from mouse ascites fluids or tissue culture supernatant by affinity chromatography (protein A/G) |
| Conjugation: | Unconjugated |
| Storage: | Store at -20°C as received. |
| Stability: | Stable for 12 months from date of receipt. |
| Gene Name: | S Protein |
| Database Link: | Entrez Gene 43740568 SARS-CoV-2 |

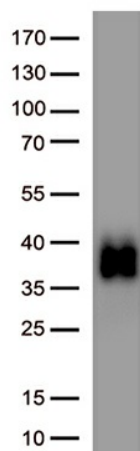


[View online »](#)

Product images:



Western blot analysis of recombinant SARS-CoV-2 Spike-RBD protein (Cat#[TP750182], 0.02ug) by using anti-SARS-CoV-2 spike protein antibody ([TA890231]). (1:5000)



Western blot analysis of recombinant fusion protein of SARS-CoV-2 Spike RBD Protein and Virion Surface Domain of Membrane Protein (Cat# [TP701119], 0.05ug) by using anti-SARS-CoV-2 spike protein antibody (Cat# [TA890231]). (1:5000)