

## Product datasheet for **TA890231**

### S Protein Rabbit Antibody

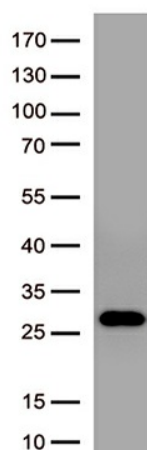
#### Product data:

Product Type:	Primary Antibodies
Applications:	ELISA, WB
Recommended Dilution:	WB 1:2000-5000, ELISA 1:5000-1:10000
Reactivity:	SARS-CoV-2
Host:	Rabbit
Isotype:	IgG
Immunogen:	Recombinant SARS-CoV-2 Spike-RBD protein produced in E.coli.
Formulation:	PBS (pH7.3) containing 1% BSA, 50% glycerol and 0.02% sodium azide
Concentration:	1 mg/ml
Purification:	Purified from mouse ascites fluids or tissue culture supernatant by affinity chromatography (protein A/G)
Conjugation:	Unconjugated
Storage:	Store at -20°C as received.
Stability:	Stable for 12 months from date of receipt.
Gene Name:	S Protein
Database Link:	<a href="#">Entrez Gene 43740568 SARS-CoV-2</a>

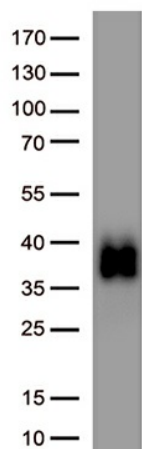


[View online »](#)

## Product images:



Western blot analysis of recombinant SARS-CoV-2 Spike-RBD protein (Cat#[TP750182], 0.02ug) by using anti-SARS-CoV-2 spike protein antibody (TA890231). (1:5000)



Western blot analysis of recombinant fusion protein of SARS-CoV-2 Spike RBD Protein and Virion Surface Domain of Membrane Protein (Cat# [TP701119], 0.05ug) by using anti-SARS-CoV-2 spike protein antibody (Cat# TA890231). (1:5000)