

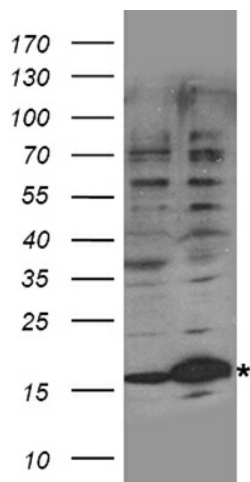
## Product datasheet for TA890155M

### UBE2NL Rabbit Polyclonal Antibody

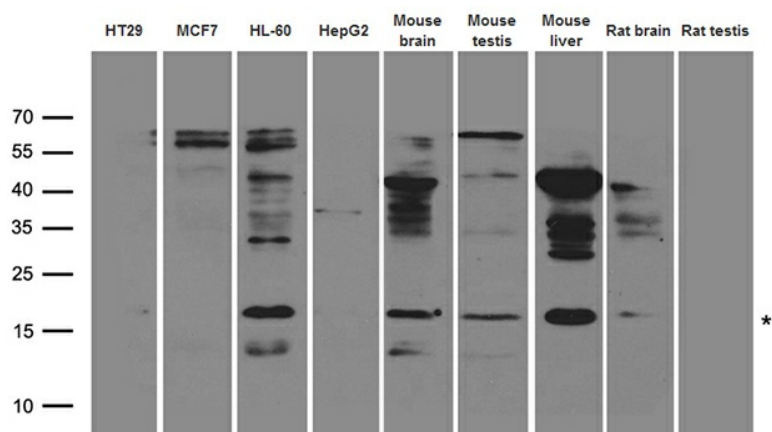
#### Product data:

|                         |   |
|-------------------------|---|
| Product Type:           | Primary Antibodies  |
| Applications:           | WB  |
| Recommended Dilution:   | WB: 1:500~2000  |
| Reactivity:             | Human, Rat, Mouse   |
| Host:                   | Rabbit  |
| Isotype:                | IgG   |
| Clonality:              | Polyclonal  |
| Immunogen:              | Recombinant protein of human UBE2NL   |
| Formulation:            | PBS with 0.02% sodium azide, 50% glycerol, pH7.3  |
| Concentration:          | 3.3 mg/ml   |
| Purification:           | Purified from the immunized serum by affinity chromatography (Protein A/G)  |
| Conjugation:            | Unconjugated  |
| Storage:                | Store at -20°C as received.   |
| Stability:              | Stable for 12 months from date of receipt.  |
| Predicted Protein Size: | 17.2 kDa  |
| Gene Name:              | ubiquitin conjugating enzyme E2 N like (gene/pseudogene)  |
| Database Link:          | <a href="#">NP_001013007</a><br><a href="#">Entrez Gene 389898 Human</a><br><a href="#">Q5JXB2</a>  |
| Background:             | This gene is intronless and encodes a member of the ubiquitin-conjugating enzyme family. The protein product is 91% identical to ubiquitin-conjugating enzyme E2N, a multi-exon gene product. This locus represents a polymorphic pseudogene, where some individuals contain an allele that can encode a full-length protein, while others have a non-functional allele containing a premature stop codon (reference SNP rs237520) that truncates the coding sequence. [provided by RefSeq, Jun 2014] |
| Synonyms:               | Li174   |
| Protein Pathways:       | Ubiquitin mediated proteolysis  |


[View online »](#)

**Product images:**


HEK293T cells were transfected with the pCMV6-ENTRY control (Left lane) or pCMV6-ENTRY UBE2NL ([RC215865], Right lane) cDNA for 48 hrs and lysed. Equivalent amounts of cell lysates (5 ug per lane) were separated by SDS-PAGE and immunoblotted with anti-UBE2N. Positive lysates [LY422948] (100ug) and [LC422948] (20ug) can be purchased separately from OriGene.



Western blot analysis of extracts (35ug) from different cell lines and tissues by using anti-UBE2NL rabbit polyclonal antibody.