

Product datasheet for **TA890154M**

UBE2L3 Rabbit Polyclonal Antibody

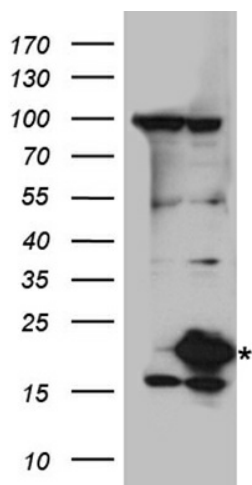
Product data:

Product Type:	Primary Antibodies
Applications:	WB
Recommended Dilution:	WB: 1:500~2000
Reactivity:	Human, Rat, Mouse
Host:	Rabbit
Isotype:	IgG
Clonality:	Polyclonal
Immunogen:	Recombinant protein of human UBE2L3
Formulation:	PBS with 0.02% sodium azide, 50% glycerol, pH7.3
Concentration:	1.45 mg/ml
Purification:	Purified from the immunized serum by affinity chromatography (Protein A/G)
Conjugation:	Unconjugated
Storage:	Store at -20°C as received.
Stability:	Stable for 12 months from date of receipt.
Predicted Protein Size:	17.7 kDa
Gene Name:	ubiquitin conjugating enzyme E2 L3
Database Link:	NP_003338 Entrez Gene 22195 Mouse Entrez Gene 363836 Rat Entrez Gene 7332 Human P68036
Background:	The modification of proteins with ubiquitin is an important cellular mechanism for targeting abnormal or short-lived proteins for degradation. Ubiquitination involves at least three classes of enzymes: ubiquitin-activating enzymes (E1s), ubiquitin-conjugating enzymes (E2s) and ubiquitin-protein ligases (E3s). This gene encodes a member of the E2 ubiquitin-conjugating enzyme family. This enzyme is demonstrated to participate in the ubiquitination of p53, c-Fos, and the NF-κB precursor p105 in vitro. Several alternatively spliced transcript variants have been found for this gene. [provided by RefSeq, Sep 2009]
Synonyms:	E2-F1; L-UBC; UBCH7; UbcM4

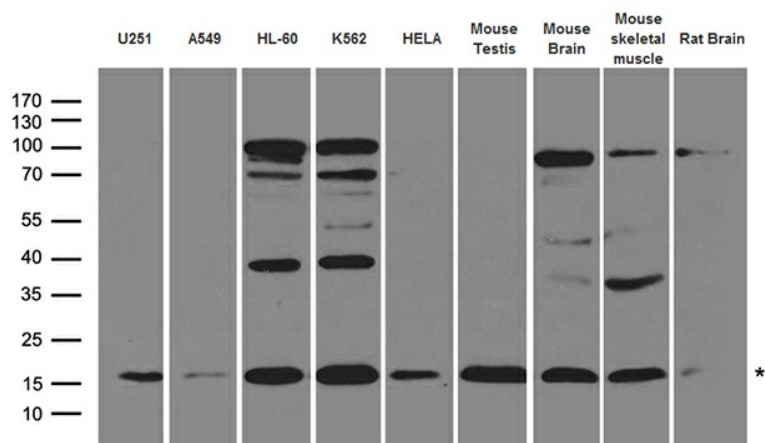

[View online »](#)

Protein Pathways: Parkinson's disease, Ubiquitin mediated proteolysis

Product images:



HEK293T cells were transfected with the pCMV6-ENTRY control (Cat# [PS100001], Left lane) or pCMV6-ENTRY UBE2L3 (Cat# [RC208780], Right lane) cDNA for 48 hrs and lysed. Equivalent amounts of cell lysates (5 ug per lane) were separated by SDS-PAGE and immunoblotted with anti-UBE2L3 antibody (Cat# [TA890154]). Positive lysates [LY401144] (100ug) and [LC401144] (20ug) can be purchased separately from OriGene.



Western blot analysis of extracts (35ug) from different cell lines and tissues by using anti-UBE2L3 rabbit polyclonal antibody.