

## Product datasheet for **TA890150M**

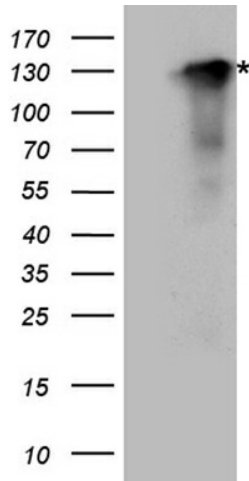
### Synaptopodin (SYNPO) Rabbit Polyclonal Antibody

#### Product data:

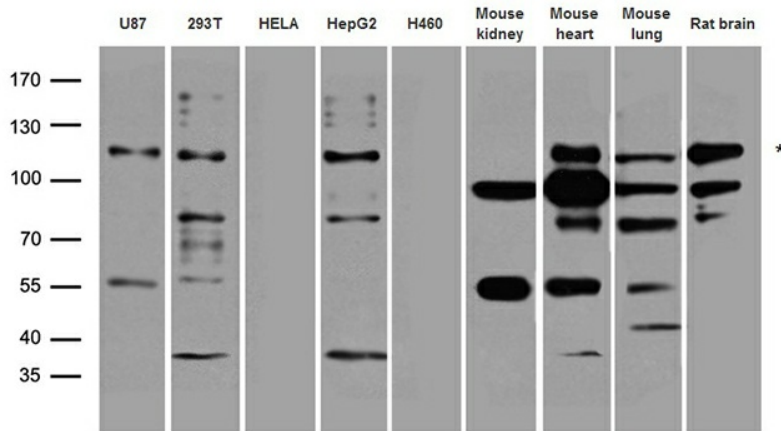
Product Type:	Primary Antibodies
Applications:	WB
Recommended Dilution:	WB: 1:500~2000
Reactivity:	Human, Rat, Mouse
Host:	Rabbit
Isotype:	IgG
Clonality:	Polyclonal
Immunogen:	Recombinant protein of human SYNPO
Formulation:	PBS with 0.02% sodium azide, 50% glycerol, pH7.3
Concentration:	2.15 mg/ml
Purification:	Purified from the immunized serum by affinity chromatography (Protein A/G)
Conjugation:	Unconjugated
Storage:	Store at -20°C as received.
Stability:	Stable for 12 months from date of receipt.
Predicted Protein Size:	73.5 kDa
Gene Name:	synaptopodin
Database Link:	<a href="#">NP_001103444</a> <a href="#">Entrez Gene 60324 Rat</a> <a href="#">Entrez Gene 104027 Mouse</a> <a href="#">Entrez Gene 11346 Human</a> <a href="#">Q8N3V7</a>
Background:	Synaptopodin is an actin-associated protein that may play a role in actin-based cell shape and motility. The name synaptopodin derives from the protein's associations with postsynaptic densities and dendritic spines and with renal podocytes (Mundel et al., 1997 [PubMed 9314539]). [supplied by OMIM, Mar 2008]
Synonyms:	KIAA1029

[View online »](#)

## Product images:



HEK293T cells were transfected with the pCMV6-ENTRY control (Cat# [PS100001], Left lane) or pCMV6-ENTRY SYNPO (Cat# [RC228616], Right lane) cDNA for 48 hrs and lysed. Equivalent amounts of cell lysates (5 ug per lane) were separated by SDS-PAGE and immunoblotted with anti-SYNPO antibody (Cat# [TA890150]). Positive lysates [LY426310] (100ug) and [LC426310] (20ug) can be purchased separately from OriGene.



Western blot analysis of extracts (35ug) from different cell lines and tissues by using anti-SYNPO rabbit polyclonal antibody.