

## Product datasheet for **TA890149S**

### epithelial Sodium Channel alpha (SCNN1A) Rabbit Polyclonal Antibody

#### Product data:

Product Type:	Primary Antibodies
Applications:	WB
Recommended Dilution:	WB: 1:500~2000
Reactivity:	Human
Host:	Rabbit
Isotype:	IgG
Clonality:	Polyclonal
Immunogen:	Recombinant protein of human SCNN1A
Formulation:	PBS with 0.02% sodium azide, 50% glycerol, pH7.3
Concentration:	1.93 mg/ml
Purification:	Purified from the immunized serum by affinity chromatography (Protein A/G)
Conjugation:	Unconjugated
Storage:	Store at -20°C as received.
Stability:	Stable for 12 months from date of receipt.
Predicted Protein Size:	75.5 kDa
Gene Name:	sodium channel epithelial 1 alpha subunit
Database Link:	<a href="#">NP_001029</a> <a href="#">Entrez Gene 6337 Human P37088</a>
Background:	Nonvoltage-gated, amiloride-sensitive, sodium channels control fluid and electrolyte transport across epithelia in many organs. These channels are heteromeric complexes consisting of 3 subunits: alpha, beta, and gamma. This gene encodes the alpha subunit, and mutations in this gene have been associated with pseudohypoaldosteronism type 1 (PHA1), a rare salt wasting disease resulting from target organ unresponsiveness to mineralocorticoids. Alternatively spliced transcript variants encoding different isoforms have been described for this gene. [provided by RefSeq, Apr 2009]
Synonyms:	BESC2; ENaCa; ENaCalpha; SCNEA; SCNN1

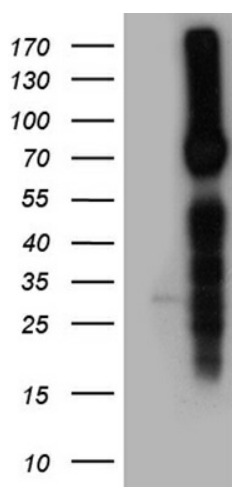


[View online »](#)

Protein Families: Druggable Genome, Ion Channels: Other, Transmembrane

Protein Pathways: Taste transduction

### Product images:



HEK293T cells were transfected with the pCMV6-ENTRY control (Cat# [PS100001], Left lane) or pCMV6-ENTRY SCNN1A (Cat# [RC228555], Right lane) cDNA for 48 hrs and lysed. Equivalent amounts of cell lysates (5 ug per lane) were separated by SDS-PAGE and immunoblotted with anti-SCNN1A antibody (Cat# [TA890149]). Positive lysates [LY422000] (100ug) and [LC422000] (20ug) can be purchased separately from OriGene.