

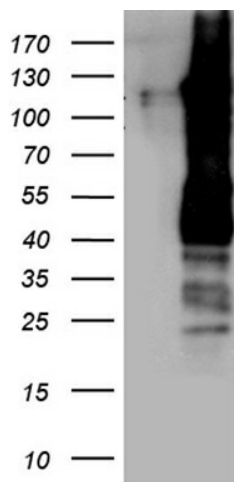
## Product datasheet for **TA890148M**

### **SAPS2 (PPP6R2) Rabbit Polyclonal Antibody**

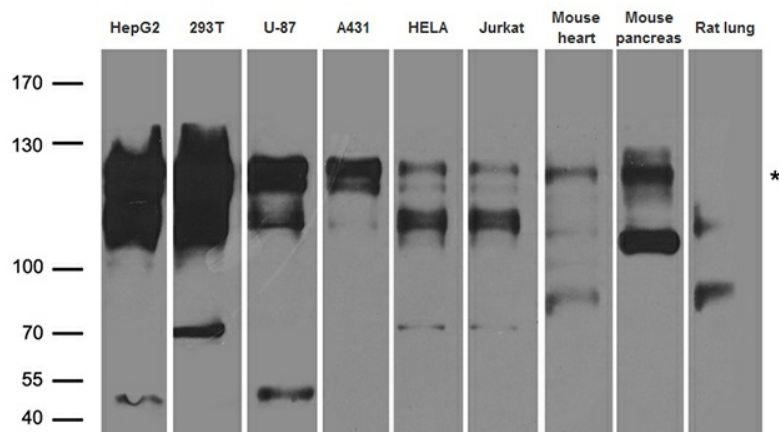
#### **Product data:**

|                         |   |
|-------------------------|---|
| Product Type:           | Primary Antibodies  |
| Applications:           | WB  |
| Recommended Dilution:   | WB: 1:500~2000  |
| Reactivity:             | Human, Mouse  |
| Host:                   | Rabbit  |
| Isotype:                | IgG   |
| Clonality:              | Polyclonal  |
| Immunogen:              | Recombinant protein of human PPP6R2   |
| Formulation:            | PBS with 0.02% sodium azide, 50% glycerol, pH7.3  |
| Concentration:          | 2.5 mg/ml   |
| Purification:           | Purified from the immunized serum by affinity chromatography (Protein A/G)  |
| Conjugation:            | Unconjugated  |
| Storage:                | Store at -20°C as received.   |
| Stability:              | Stable for 12 months from date of receipt.  |
| Predicted Protein Size: | 101.1 kDa   |
| Gene Name:              | protein phosphatase 6 regulatory subunit 2  |
| Database Link:          | <a href="#">NP_055493</a><br><a href="#">Entrez Gene 71474 Mouse</a> <a href="#">Entrez Gene 9701 Human</a><br><a href="#">O75170</a>   |
| Background:             | Protein phosphatase regulatory subunits, such as SAPS2, modulate the activity of protein phosphatase catalytic subunits by restricting substrate specificity, recruiting substrates, and determining the intracellular localization of the holoenzyme. SAPS2 is a regulatory subunit for the protein phosphatase-6 catalytic subunit (PPP6C; MIM 612725) (Stefansson and Brautigan, 2006 [PubMed 16769727]). [supplied by OMIM, Nov 2010] |
| Synonyms:               | KIAA0685; PP6R2; SAP190; SAPS2  |


[View online »](#)

**Product images:**


HEK293T cells were transfected with the pCMV6-ENTRY control (Cat# [PS100001], Left lane) or pCMV6-ENTRY SAPS2 (PPP6R2) (Cat# [RC235081], Right lane) cDNA for 48 hrs and lysed. Equivalent amounts of cell lysates (5 ug per lane) were separated by SDS-PAGE and immunoblotted with anti-SAPS2 antibody (Cat# [TA890148]). Positive lysates [LY415132] (100ug) and [LC415132] (20ug) can be purchased separately from OriGene.



Western blot analysis of extracts (35ug) from different cell lines and tissues by using anti-SAPS2 (PPP6R2) rabbit polyclonal antibody.