

## Product datasheet for **TA890147S**

### **RUNX1 Rabbit Polyclonal Antibody**

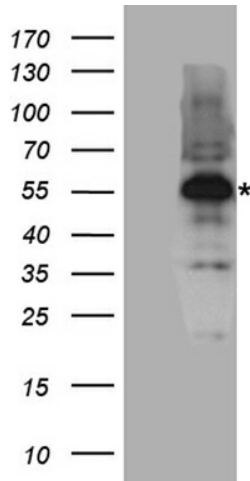
#### **Product data:**

Product Type:	Primary Antibodies
Applications:	WB
Recommended Dilution:	WB: 1:500~2000
Reactivity:	Human, Mouse, Rat
Host:	Rabbit
Isotype:	IgG
Clonality:	Polyclonal
Immunogen:	Recombinant protein of human RUNX1
Formulation:	PBS with 0.02% sodium azide, 50% glycerol, pH7.3
Concentration:	2.24 mg/ml
Purification:	Purified from the immunized serum by affinity chromatography (Protein A/G)
Conjugation:	Unconjugated
Storage:	Store at -20°C as received.
Stability:	Stable for 12 months from date of receipt.
Predicted Protein Size:	51.6 kDa
Gene Name:	runt related transcription factor 1
Database Link:	<a href="#">NP_001745</a> <a href="#">Entrez Gene 12394 MouseEntrez Gene 50662 RatEntrez Gene 861 Human Q01196</a>
Synonyms:	AML1; AML1-EVI-1; AMLCR1; CBFA2; EVI-1; PEBP2aB
Protein Families:	Druggable Genome, ES Cell Differentiation/IPS, Transcription Factors
Protein Pathways:	Acute myeloid leukemia, Chronic myeloid leukemia, Pathways in cancer

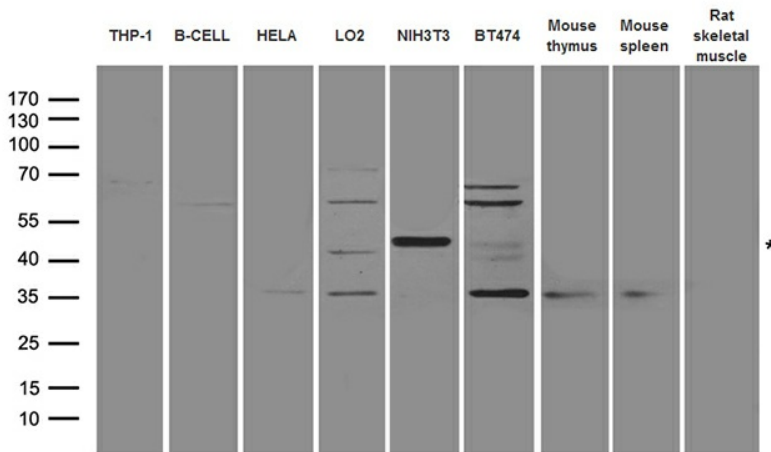


[View online »](#)

Product images:



HEK293T cells were transfected with the pCMV6-ENTRY control (Cat# [PS100001], Left lane) or pCMV6-ENTRY RUNX1 (Cat# [RC223809], Right lane) cDNA for 48 hrs and lysed. Equivalent amounts of cell lysates (5 ug per lane) were separated by SDS-PAGE and immunoblotted with anti-RUNX1 antibody (Cat# [TA890147]). Positive lysates [LY419764] (100ug) and [LC419764] (20ug) can be purchased separately from OriGene.



Western blot analysis of extracts (35ug) from different cell lines and tissues by using anti-RUNX1 rabbit polyclonal antibody.