

Product datasheet for **TA890146M**

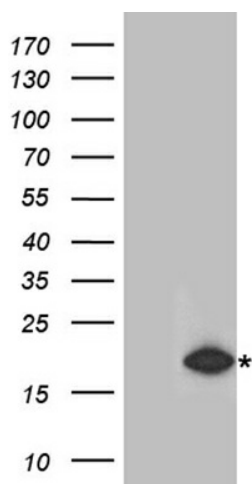
RMI2 Rabbit Polyclonal Antibody

Product data:

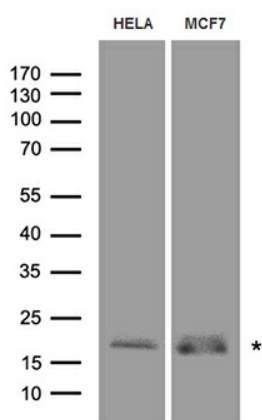
Product Type:	Primary Antibodies
Applications:	WB
Recommended Dilution:	WB: 1:500~2000
Reactivity:	Human, Rat
Host:	Rabbit
Isotype:	IgG
Clonality:	Polyclonal
Immunogen:	Recombinant protein of human RMI2
Formulation:	PBS with 0.02% sodium azide, 50% glycerol, pH7.3
Concentration:	1.18 mg/ml
Purification:	Purified from the immunized serum by affinity chromatography (Protein A/G)
Conjugation:	Unconjugated
Storage:	Store at -20°C as received.
Stability:	Stable for 12 months from date of receipt.
Predicted Protein Size:	15.7 kDa
Gene Name:	RecQ mediated genome instability 2
Database Link:	NP_689521 Entrez Gene 116028 Human Q96E14
Background:	RMI2 is a component of the BLM (RECQL3; MIM 604610) complex, which plays a role in homologous recombination-dependent DNA repair and is essential for genome stability (Xu et al., 2008 [PubMed 18923082]). [supplied by OMIM, Nov 2008]
Synonyms:	BLAP18; C16orf75



[View online »](#)

Product images:


HEK293T cells were transfected with the pCMV6-ENTRY control (Cat# [PS100001], Left lane) or pCMV6-ENTRY RM12 (Cat# [RC205111], Right lane) cDNA for 48 hrs and lysed. Equivalent amounts of cell lysates (5 ug per lane) were separated by SDS-PAGE and immunoblotted with anti-RM12 antibody (Cat# [TA890146]). Positive lysates [LY407664] (100ug) and [LC407664] (20ug) can be purchased separately from OriGene.



Western blot analysis of extracts (35ug) from different cell lines and tissues by using anti-RM12 rabbit polyclonal antibody.