

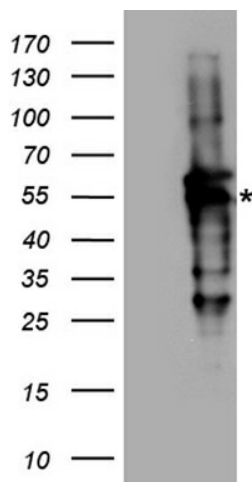
Product datasheet for **TA890144M**

RAD52 Rabbit Polyclonal Antibody

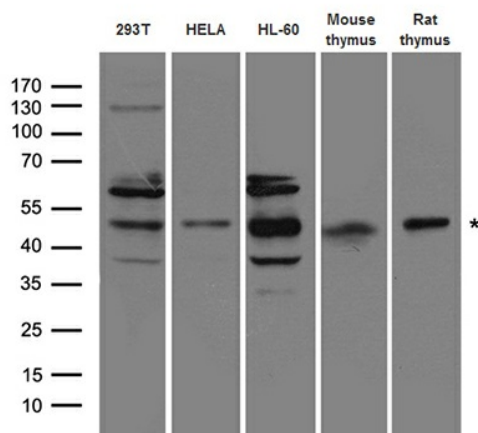
Product data:

Product Type:	Primary Antibodies
Applications:	WB
Recommended Dilution:	WB: 1:500~2000
Reactivity:	Human, Rat, Mouse
Host:	Rabbit
Isotype:	IgG
Clonality:	Polyclonal
Immunogen:	Recombinant protein of human RAD52
Formulation:	PBS with 0.02% sodium azide, 50% glycerol, pH7.3
Concentration:	2.54 mg/ml
Purification:	Purified from the immunized serum by affinity chromatography (Protein A/G)
Conjugation:	Unconjugated
Storage:	Store at -20°C as received.
Stability:	Stable for 12 months from date of receipt.
Predicted Protein Size:	46 kDa
Gene Name:	RAD52 homolog, DNA repair protein
Database Link:	NP_602296 Entrez Gene 19365 Mouse Entrez Gene 297561 Rat Entrez Gene 5893 Human P43351
Synonyms:	RP11-359B12.2
Protein Families:	Druggable Genome
Protein Pathways:	Homologous recombination

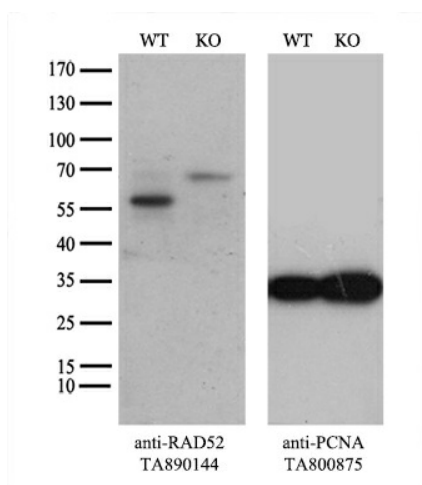
[View online »](#)

Product images:


HEK293T cells were transfected with the pCMV6-ENTRY control (Cat# [PS100001], Left lane) or pCMV6-ENTRY RAD52 (Cat# [RC222194], Right lane) cDNA for 48 hrs and lysed. Equivalent amounts of cell lysates (5 ug per lane) were separated by SDS-PAGE and immunoblotted with anti-RAD52 antibody (Cat# [TA890144]). Positive lysates [LY408748] (100ug) and [LC408748] (20ug) can be purchased separately from OriGene.



Western blot analysis of extracts (35ug) from different cell lines and tissues by using anti-RAD52 rabbit polyclonal antibody.



Equivalent amounts of cell lysates (10 ug per lane) of wild-type HeLa cells (WT, Cat# LC810HELA) and RAD52-Knockout HeLa cells (KO, Cat# [LC830600]) were separated by SDS-PAGE and immunoblotted with anti-RAD52 rabbit polyclonal antibody [TA890144] (1:1000). Then the blotted membrane was stripped and reprobed with anti-PCNA antibody as a loading control.