

## Product datasheet for **TA890143S**

### **RAD51 Rabbit Polyclonal Antibody**

#### **Product data:**

Product Type:	Primary Antibodies
Applications:	WB
Recommended Dilution:	WB: 1:500~2000
Reactivity:	Human, Rat, Mouse
Host:	Rabbit
Isotype:	IgG
Clonality:	Polyclonal
Immunogen:	Recombinant protein of human RAD51
Formulation:	PBS with 0.02% sodium azide, 50% glycerol, pH7.3
Concentration:	1.43 mg/ml
Purification:	Purified from the immunized serum by affinity chromatography (Protein A/G)
Conjugation:	Unconjugated
Storage:	Store at -20°C as received.
Stability:	Stable for 12 months from date of receipt.
Predicted Protein Size:	36.6 kDa
Gene Name:	RAD51 recombinase
Database Link:	<a href="#">NP_597994</a> <a href="#">Entrez Gene 19361 Mouse</a> <a href="#">Entrez Gene 499870 Rat</a> <a href="#">Entrez Gene 5888 Human</a> <a href="#">Q06609</a>



[View online »](#)

**Background:**

The protein encoded by this gene is a member of the RAD51 protein family. RAD51 family members are highly similar to bacterial RecA and *Saccharomyces cerevisiae* Rad51, and are known to be involved in the homologous recombination and repair of DNA. This protein can interact with the ssDNA-binding protein RPA and RAD52, and it is thought to play roles in homologous pairing and strand transfer of DNA. This protein is also found to interact with BRCA1 and BRCA2, which may be important for the cellular response to DNA damage. BRCA2 is shown to regulate both the intracellular localization and DNA-binding ability of this protein. Loss of these controls following BRCA2 inactivation may be a key event leading to genomic instability and tumorigenesis. Multiple transcript variants encoding different isoforms have been found for this gene. [provided by RefSeq, Aug 2009]

**Synonyms:**

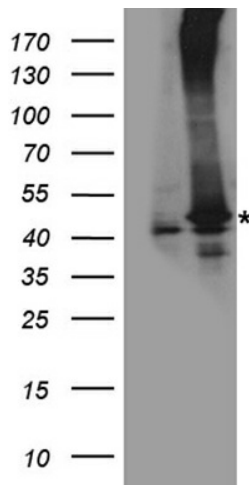
BRCC5; FANCR; HRAD51; HsRad51; HsT16930; MRMV2; RAD51A; RECA

**Protein Families:**

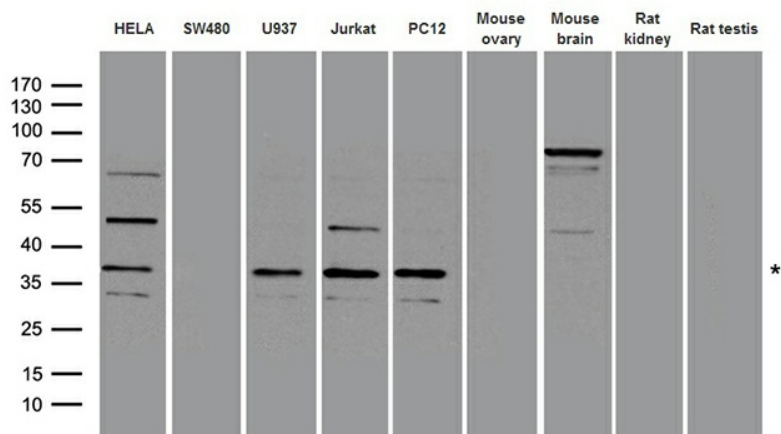
Druggable Genome, Stem cell - Pluripotency, Transcription Factors

**Protein Pathways:**

Homologous recombination, Pancreatic cancer, Pathways in cancer

**Product images:**

HEK293T cells were transfected with the pCMV6-ENTRY control (Cat# [PS100001], Left lane) or pCMV6-ENTRY RAD51 (Cat# [RC228272], Right lane) cDNA for 48 hrs and lysed. Equivalent amounts of cell lysates (5 ug per lane) were separated by SDS-PAGE and immunoblotted with anti-RAD51 antibody (Cat# [TA890143]). Positive lysates [LY408818] (100ug) and [LC408818] (20ug) can be purchased separately from OriGene.



Western blot analysis of extracts (35ug) from different cell lines and tissues by using anti-RAD51 rabbit polyclonal antibody.