

Product datasheet for **TA890142M**

SHP2 (PTPN11) Rabbit Polyclonal Antibody

Product data:

Product Type:	Primary Antibodies
Applications:	WB
Recommended Dilution:	WB: 1:500~2000
Reactivity:	Human, Rat, Mouse
Host:	Rabbit
Isotype:	IgG
Clonality:	Polyclonal
Immunogen:	Recombinant protein of human PTPN11
Formulation:	PBS with 0.02% sodium azide, 50% glycerol, pH7.3
Concentration:	2.23 mg/ml
Purification:	Purified from the immunized serum by affinity chromatography (Protein A/G)
Conjugation:	Unconjugated
Storage:	Store at -20°C as received.
Stability:	Stable for 12 months from date of receipt.
Predicted Protein Size:	67.8 kDa
Gene Name:	protein tyrosine phosphatase, non-receptor type 11
Database Link:	NP_002825 Entrez Gene 19247 Mouse Entrez Gene 25622 Rat Entrez Gene 5781 Human Q06124

Background: The protein encoded by this gene is a member of the protein tyrosine phosphatase (PTP) family. PTPs are known to be signaling molecules that regulate a variety of cellular processes including cell growth, differentiation, mitotic cycle, and oncogenic transformation. This PTP contains two tandem Src homology-2 domains, which function as phospho-tyrosine binding domains and mediate the interaction of this PTP with its substrates. This PTP is widely expressed in most tissues and plays a regulatory role in various cell signaling events that are important for a diversity of cell functions, such as mitogenic activation, metabolic control, transcription regulation, and cell migration. Mutations in this gene are a cause of Noonan syndrome as well as acute myeloid leukemia. [provided by RefSeq, Aug 2016]

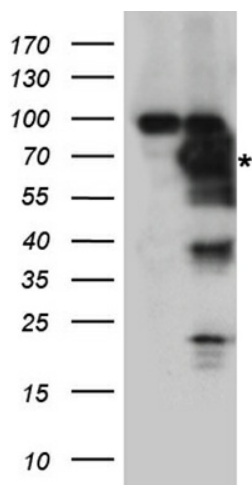

[View online »](#)

Synonyms: BPTP3; CFC; JMML; METCD5; NS1; PTP-1D; PTP2C; SH-PTP2; SH-PTP3; SHP2

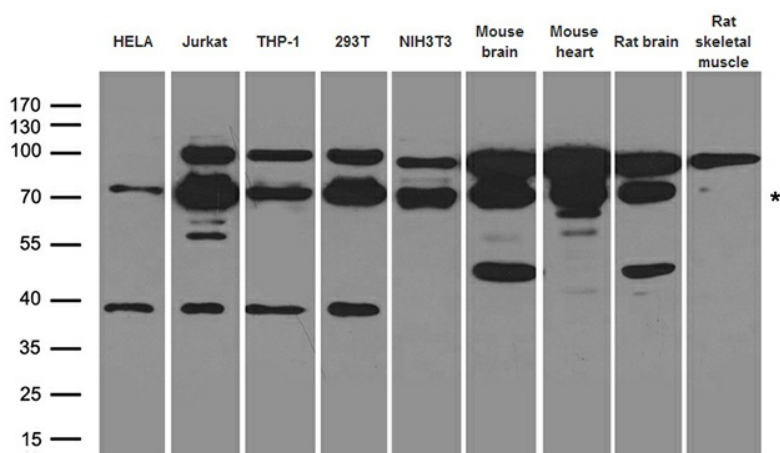
Protein Families: Druggable Genome, Phosphatase

Protein Pathways: Adipocytokine signaling pathway, Chronic myeloid leukemia, Epithelial cell signaling in Helicobacter pylori infection, Jak-STAT signaling pathway, Leukocyte transendothelial migration, Natural killer cell mediated cytotoxicity, Neurotrophin signaling pathway, Renal cell carcinoma

Product images:



HEK293T cells were transfected with the pCMV6-ENTRY control (Left lane) or pCMV6-ENTRY PTPN11 ([RC220029], Right lane) cDNA for 48 hrs and lysed. Equivalent amounts of cell lysates (5 ug per lane) were separated by SDS-PAGE and immunoblotted with anti-PTPN11 rabbit polyclonal antibody.



Western blot analysis of extracts (35ug) from different cell lines and tissues by using anti-PTPN11 rabbit polyclonal antibody.