

## Product datasheet for **TA890138M**

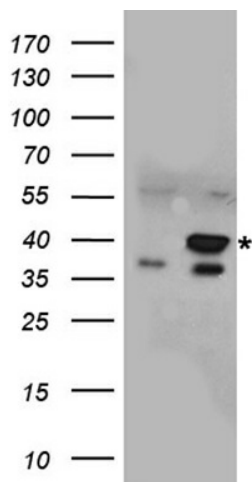
### **NTH1 (NTHL1) Rabbit Polyclonal Antibody**

#### **Product data:**

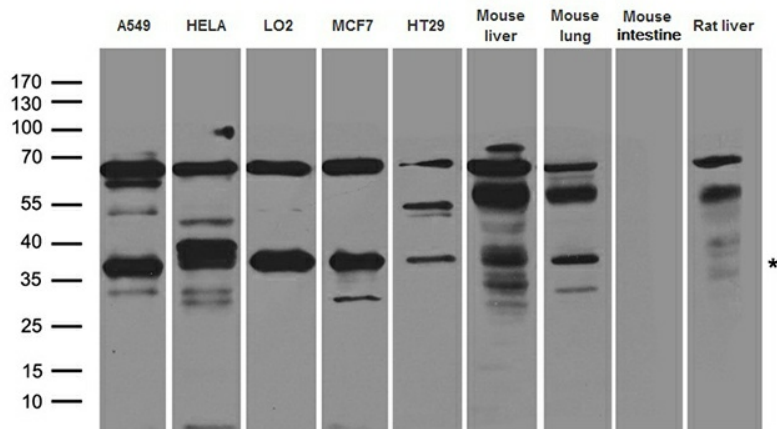
Product Type:	Primary Antibodies
Applications:	WB
Recommended Dilution:	WB: 1:500~2000
Reactivity:	Human, Mouse
Host:	Rabbit
Isotype:	IgG
Clonality:	Polyclonal
Immunogen:	Recombinant protein of human NTHL1
Formulation:	PBS with 0.02% sodium azide, 50% glycerol, pH7.3
Concentration:	1.28 mg/ml
Purification:	Purified from the immunized serum by affinity chromatography (Protein A/G)
Conjugation:	Unconjugated
Storage:	Store at -20°C as received.
Stability:	Stable for 12 months from date of receipt.
Predicted Protein Size:	34.2 kDa
Gene Name:	nth-like DNA glycosylase 1
Database Link:	<a href="#">NP_002519</a> <a href="#">Entrez Gene 18207 Mouse</a> <a href="#">Entrez Gene 4913 Human</a> <a href="#">P78549</a>
Synonyms:	hNTH1; NTH1; OCTS3
Protein Families:	Druggable Genome, Stem cell - Pluripotency
Protein Pathways:	Base excision repair



[View online »](#)

**Product images:**


HEK293T cells were transfected with the pCMV6-ENTRY control (Cat# [PS100001], Left lane) or pCMV6-ENTRY NTHL1 (Cat# [RC214598], Right lane) cDNA for 48 hrs and lysed. Equivalent amounts of cell lysates (5 ug per lane) were separated by SDS-PAGE and immunoblotted with anti-NTHL1 antibody (Cat# [TA890138]). Positive lysates [LY419272] (100ug) and [LC419272] (20ug) can be purchased separately from OriGene.



Western blot analysis of extracts (35ug) from different cell lines and tissues by using anti-NTHL1 rabbit polyclonal antibody.