

## Product datasheet for **TA890137S**

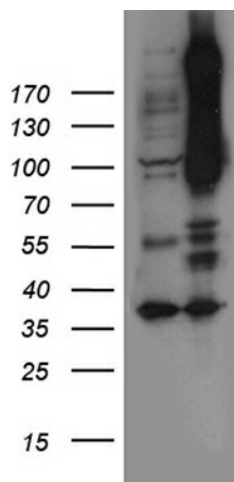
### NOTCH4 Rabbit Polyclonal Antibody

#### Product data:

Product Type:	Primary Antibodies
Applications:	WB
Recommended Dilution:	WB: 1:500~2000
Reactivity:	Human
Host:	Rabbit
Isotype:	IgG
Clonality:	Polyclonal
Immunogen:	Recombinant protein of human NOTCH4
Formulation:	PBS with 0.02% sodium azide, 50% glycerol, pH7.3
Concentration:	3.63 mg/ml
Purification:	Purified from the immunized serum by affinity chromatography (Protein A/G)
Conjugation:	Unconjugated
Storage:	Store at -20°C as received.
Stability:	Stable for 12 months from date of receipt.
Predicted Protein Size:	210.1 kDa
Gene Name:	notch 4
Database Link:	<a href="#">NP_004548</a> <a href="#">Entrez Gene 4855 Human</a> <a href="#">Q99466</a>
Synonyms:	INT3
Protein Families:	Druggable Genome
Protein Pathways:	Dorso-ventral axis formation, Notch signaling pathway



[View online »](#)

**Product images:**

HEK293T cells were transfected with the pCMV6-ENTRY control (Cat# [PS100001], Left lane) or pCMV6-ENTRY NOTCH4 (Cat# [RC221762], Right lane) cDNA for 48 hrs and lysed. Equivalent amounts of cell lysates (5 ug per lane) were separated by SDS-PAGE and immunoblotted with anti-NOTCH antibody (Cat# [TA890137]). Positive lysates [LY401444] (100ug) and [LC401444] (20ug) can be purchased separately from OriGene.