

## Product datasheet for **TA890135**

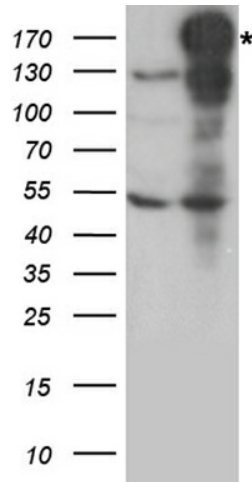
### NEDD4 Rabbit Polyclonal Antibody

#### Product data:

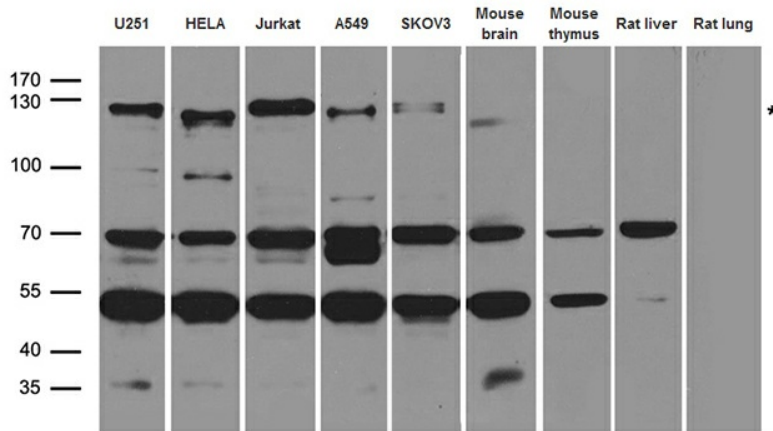
<b>Product Type:</b>	Primary Antibodies
<b>Applications:</b>	WB
<b>Recommended Dilution:</b>	WB: 1:500~2000
<b>Reactivity:</b>	Human
<b>Host:</b>	Rabbit
<b>Isotype:</b>	IgG
<b>Clonality:</b>	Polyclonal
<b>Immunogen:</b>	Recombinant protein of human NEDD4
<b>Formulation:</b>	PBS with 0.02% sodium azide, 50% glycerol, pH7.3
<b>Concentration:</b>	2.61 mg/ml
<b>Purification:</b>	Purified from the immunized serum by affinity chromatography (Protein A/G)
<b>Conjugation:</b>	Unconjugated
<b>Storage:</b>	Store at -20°C as received.
<b>Stability:</b>	Stable for 12 months from date of receipt.
<b>Predicted Protein Size:</b>	140.7 kDa
<b>Gene Name:</b>	neural precursor cell expressed, developmentally down-regulated 4, E3 ubiquitin protein ligase
<b>Database Link:</b>	<a href="#">NP_940682</a> <a href="#">Entrez Gene 4734 Human</a> <a href="#">P46934</a>
<b>Synonyms:</b>	NEDD4-1; RPF1
<b>Protein Families:</b>	Druggable Genome
<b>Protein Pathways:</b>	Endocytosis, Ubiquitin mediated proteolysis



**Product images:**



HEK293T cells were transfected with the pCMV6-ENTRY control (Left lane) or pCMV6-ENTRY NEDD4 ([RC212738], Right lane) cDNA for 48 hrs and lysed. Equivalent amounts of cell lysates (5 ug per lane) were separated by SDS-PAGE and immunoblotted with anti-NEDD4. Positive lysates [LY405051] (100ug) and [LC405051] (20ug) can be purchased separately from OriGene.



Western blot analysis of extracts (35ug) from different cell lines and tissues by using anti-NEDD4 rabbit polyclonal antibody.