

## Product datasheet for **TA890134**

### MMP11 Rabbit Polyclonal Antibody

#### Product data:

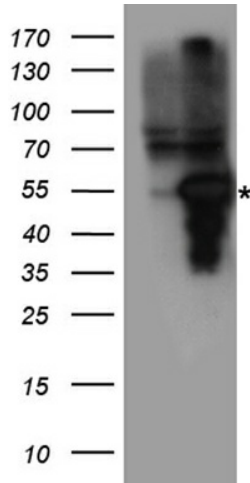
Product Type:	Primary Antibodies
Applications:	WB
Recommended Dilution:	WB: 1:500~2000
Reactivity:	Human, Rat, Mouse
Host:	Rabbit
Isotype:	IgG
Clonality:	Polyclonal
Immunogen:	Recombinant protein of human MMP11
Formulation:	PBS with 0.02% sodium azide, 50% glycerol, pH7.3
Concentration:	2.04 mg/ml
Purification:	Purified from the immunized serum by affinity chromatography (Protein A/G)
Conjugation:	Unconjugated
Storage:	Store at -20°C as received.
Stability:	Stable for 12 months from date of receipt.
Predicted Protein Size:	54.59 kDa
Gene Name:	matrix metalloproteinase 11
Database Link:	<a href="#">NP_005931</a> <a href="#">Entrez Gene 17385 Mouse</a> <a href="#">Entrez Gene 25481 Rat</a> <a href="#">Entrez Gene 4320 Human</a> <a href="#">P24347</a>
Background:	Proteins of the matrix metalloproteinase (MMP) family are involved in the breakdown of extracellular matrix in normal physiological processes, such as embryonic development, reproduction, and tissue remodeling, as well as in disease processes, such as arthritis and metastasis. Most MMP's are secreted as inactive proproteins which are activated when cleaved by extracellular proteinases. However, the enzyme encoded by this gene is activated intracellularly by furin within the constitutive secretory pathway. Also in contrast to other MMP's, this enzyme cleaves alpha 1-proteinase inhibitor but weakly degrades structural proteins of the extracellular matrix. [provided by RefSeq, Jul 2008]
Synonyms:	SL-3; ST3; STMY3



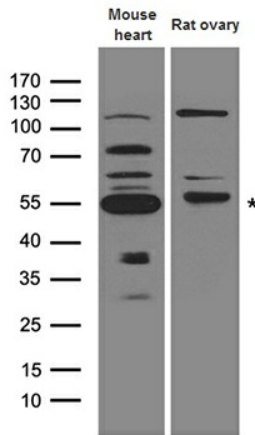
[View online »](#)

Protein Families: Druggable Genome, Protease

**Product images:**



HEK293T cells were transfected with the pCMV6-ENTRY control (Left lane) or pCMV6-ENTRY MMP11 ([RC209223], Right lane) cDNA for 48 hrs and lysed. Equivalent amounts of cell lysates (5 ug per lane) were separated by SDS-PAGE and immunoblotted with anti-MMP11. Positive lysates [LY416967] (100ug) and [LC416967] (20ug) can be purchased separately from OriGene.



Western blot analysis of extracts (35ug) from different cell lines and tissues by using anti-MMP11 rabbit polyclonal antibody.