

## Product datasheet for **TA890133M**

### MBD1 Rabbit Polyclonal Antibody

#### Product data:

|                         |   |
|-------------------------|---|
| Product Type:           | Primary Antibodies  |
| Applications:           | WB  |
| Recommended Dilution:   | WB: 1:500~2000  |
| Reactivity:             | Human   |
| Host:                   | Rabbit  |
| Isotype:                | IgG   |
| Clonality:              | Polyclonal  |
| Immunogen:              | Recombinant protein of human MBD1   |
| Formulation:            | PBS with 0.02% sodium azide, 50% glycerol, pH7.3  |
| Concentration:          | 3.76 mg/ml  |
| Purification:           | Purified from the immunized serum by affinity chromatography (Protein A/G)                    |
| Conjugation:            | Unconjugated  |
| Storage:                | Store at -20°C as received.   |
| Stability:              | Stable for 12 months from date of receipt.  |
| Predicted Protein Size: | 59.8 kDa  |
| Gene Name:              | methyl-CpG binding domain protein 1   |
| Database Link:          | <a href="#">NP_056669</a><br><a href="#">Entrez Gene 4152 Human</a><br><a href="#">Q9UIS9</a> |

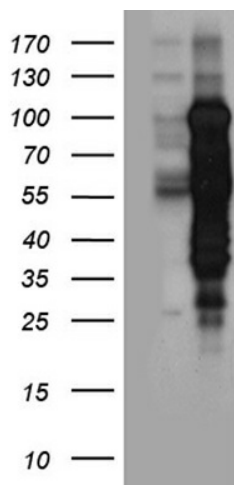
**Background:** The protein encoded by this gene is a member of a family of nuclear proteins related by the presence of a methyl-CpG binding domain (MBD). These proteins are capable of binding specifically to methylated DNA, and some members can also repress transcription from methylated gene promoters. This protein contains multiple domains: MBD at the N-terminus that functions both in binding to methylated DNA and in protein interactions; several CXXC-type zinc finger domains that mediate binding to non-methylated CpG dinucleotides; transcriptional repression domain (TRD) at the C-terminus that is involved in transcription repression and in protein interactions. Numerous alternatively spliced transcript variants encoding different isoforms have been noted for this gene. [provided by RefSeq, Feb 2011]


[View online »](#)

**Synonyms:** CXXC3; PCM1; RFT

**Protein Families:** Druggable Genome, Transcription Factors

**Product images:**



HEK293T cells were transfected with the pCMV6-ENTRY control (Cat# [PS100001], Left lane) or pCMV6-ENTRY MBD1 (Cat# [RC234662], Right lane) cDNA for 48 hrs and lysed. Equivalent amounts of cell lysates (5 ug per lane) were separated by SDS-PAGE and immunoblotted with anti-MBD1 antibody (Cat# [TA890133]). Positive lysates [LY414370] (100ug) and [LC414370] (20ug) can be purchased separately from OriGene.