

## Product datasheet for **TA890130**

### IRS2 Rabbit Polyclonal Antibody

#### Product data:

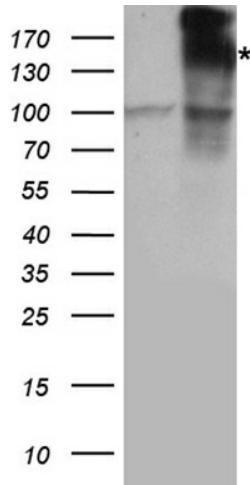
Product Type:	Primary Antibodies
Applications:	WB
Recommended Dilution:	WB: 1:500~2000
Reactivity:	Human, Rat, Mouse
Host:	Rabbit
Isotype:	IgG
Clonality:	Polyclonal
Immunogen:	Recombinant protein of human IRS2
Formulation:	PBS with 0.02% sodium azide, 50% glycerol, pH7.3
Concentration:	2.21 mg/ml
Purification:	Purified from the immunized serum by affinity chromatography (Protein A/G)
Conjugation:	Unconjugated
Storage:	Store at -20°C as received.
Stability:	Stable for 12 months from date of receipt.
Predicted Protein Size:	137.2 kDa
Gene Name:	insulin receptor substrate 2
Database Link:	<a href="#">NP_003740</a> <a href="#">Entrez Gene 29376 Rat</a> <a href="#">Entrez Gene 384783 Mouse</a> <a href="#">Entrez Gene 8660 Human</a> <a href="#">Q9Y4H2</a>
Background:	This gene encodes the insulin receptor substrate 2, a cytoplasmic signaling molecule that mediates effects of insulin, insulin-like growth factor 1, and other cytokines by acting as a molecular adaptor between diverse receptor tyrosine kinases and downstream effectors. The product of this gene is phosphorylated by the insulin receptor tyrosine kinase upon receptor stimulation, as well as by an interleukin 4 receptor-associated kinase in response to IL4 treatment. [provided by RefSeq, Jul 2008]
Synonyms:	IRS-2
Protein Families:	Druggable Genome



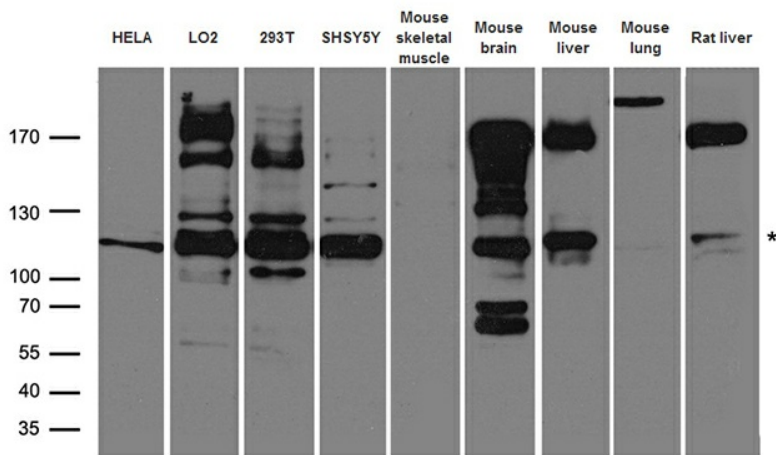
[View online »](#)

**Protein Pathways:** Adipocytokine signaling pathway, Insulin signaling pathway, Neurotrophin signaling pathway, Type II diabetes mellitus

**Product images:**



HEK293T cells were transfected with the pCMV6-ENTRY control (Cat# [PS100001], Left lane) or pCMV6-ENTRY IRS2 (Cat# [RC212413], Right lane) cDNA for 48 hrs and lysed. Equivalent amounts of cell lysates (5 ug per lane) were separated by SDS-PAGE and immunoblotted with anti-IRS2 antibody(Cat# TA890130). Positive lysates [LY418459] (100ug) and [LC418459] (20ug) can be purchased separately from OriGene.



Western blot analysis of extracts (35ug) from different cell lines and tissues by using anti-IRS2 rabbit polyclonal antibody.