

## Product datasheet for **TA890129S**

### INCENP Rabbit Polyclonal Antibody

#### Product data:

Product Type:	Primary Antibodies
Applications:	WB
Recommended Dilution:	WB: 1:500~2000
Reactivity:	Human, Rat, Mouse
Host:	Rabbit
Isotype:	IgG
Clonality:	Polyclonal
Immunogen:	Recombinant protein of human INCENP
Formulation:	PBS with 0.02% sodium azide, 50% glycerol, pH7.3
Concentration:	3.23 mg/ml
Purification:	Purified from the immunized serum by affinity chromatography (Protein A/G)
Conjugation:	Unconjugated
Storage:	Store at -20°C as received.
Stability:	Stable for 12 months from date of receipt.
Predicted Protein Size:	105.2 kDa
Gene Name:	inner centromere protein
Database Link:	<a href="#">NP_001035784</a> <a href="#">Entrez Gene 16319 Mouse</a> <a href="#">Entrez Gene 293733 Rat</a> <a href="#">Entrez Gene 3619 Human</a> <a href="#">Q9NQS7</a>



[View online »](#)

**Background:**

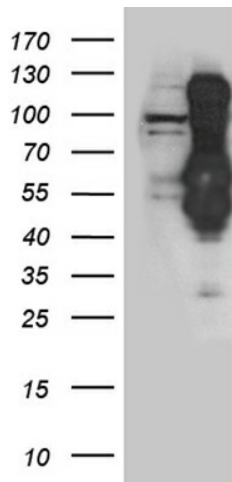
In mammalian cells, 2 broad groups of centromere-interacting proteins have been described: constitutively binding centromere proteins and 'passenger,' or transiently interacting, proteins (reviewed by Choo, 1997). The constitutive proteins include CENPA (centromere protein A; MIM 117139), CENPB (MIM 117140), CENPC1 (MIM 117141), and CENPD (MIM 117142). The term 'passenger proteins' encompasses a broad collection of proteins that localize to the centromere during specific stages of the cell cycle (Earnshaw and Mackay, 1994 [PubMed 8088460]). These include CENPE (MIM 117143); MCAK (MIM 604538); KID (MIM 603213); cytoplasmic dynein (e.g., MIM 600112); CliPs (e.g., MIM 179838); and CENPF/mitosin (MIM 600236). The inner centromere proteins (INCENPs) (Earnshaw and Cooke, 1991 [PubMed 1860899]), the initial members of the passenger protein group, display a broad localization along chromosomes in the early stages of mitosis but gradually become concentrated at centromeres as the cell cycle progresses into mid-metaphase. During telophase, the proteins are located within the midbody in the intercellular bridge, where they are discarded after cytokinesis (Cutts et al., 1999 [PubMed 10369859]). [supplied by OMIM, Mar 2008]

**Synonyms:**

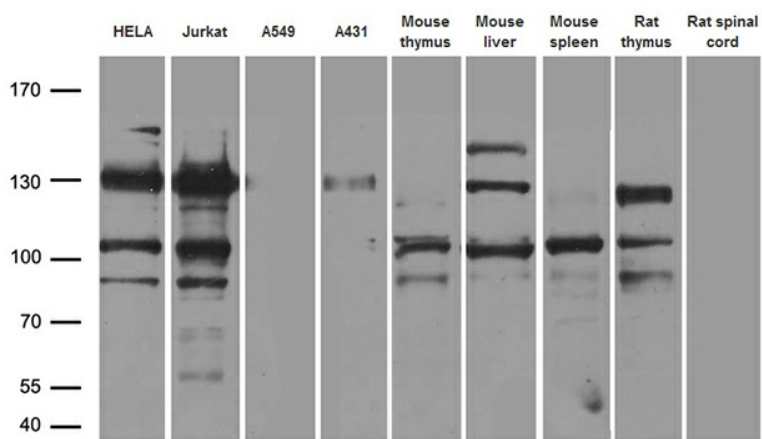
FLJ31633; MGC111393

**Protein Families:**

Druggable Genome

**Product images:**

HEK293T cells were transfected with the pCMV6-ENTRY control (Cat# [PS100001], Left lane) or pCMV6-ENTRY INCENP (Cat# [RC212647], Right lane) cDNA for 48 hrs and lysed. Equivalent amounts of cell lysates (5 ug per lane) were separated by SDS-PAGE and immunoblotted with anti-INCENP antibody (Cat# [TA890129]). Positive lysates [LY420743] (100ug) and [LC420743] (20ug) can be purchased separately from OriGene.



Western blot analysis of extracts (35ug) from different cell lines and tissues by using anti-INCENP rabbit polyclonal antibody.